

The Canadian Philatelist

Le Philatéliste canadien

January/February 2008 janvier/fevrier - VOL. 59 • NO.1



JUN 09 2001
COMMEMORATIVE AIR MAIL
NORTHERN AIRWAYS
1930-2001
FT. SELKIRK, YUKON

VIA AIR MAIL

CORREO AEREO

PM40069611 \$5.00
R 9828 5,00\$



Journal of THE ROYAL PHILATELIC SOCIETY OF CANADA
Revue de LA SOCIÉTÉ ROYALE DE PHILATÉLIE DU CANADA

20 08

Catch the TAIL END of the Lunar New Year Series



Ne RATEz pas le dernier jeu de la série sur la Nouvelle Année lunaire

Celebrate the Year of the Rat

Don't miss your chance to collect the last issue of the popular **Lunar New Year** series. The collectibles are perfect for mailing, collecting and giving.

Célébrez en grand l'année du Rat

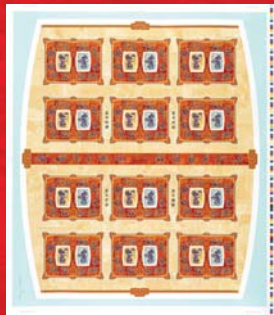
Ne ratez pas votre chance de collectionner la dernière émission de la très prisée série consacrée à la **Nouvelle Année lunaire**. Les articles de collection constituent un choix idéal pour vos envois, pour vos cadeaux ou pour votre collection.



Pane of 25
Feuille de 25 timbres
403694107
\$ 13



Souvenir sheet
Bloc-feuillet
403694145
\$ 1⁶⁰



Uncut press sheet
Planche non coupée
403694149
\$ 26⁹⁵



262177
\$ 1⁶⁹ each / l'unité
262178
\$ 1⁶⁹ each / l'unité
Set of 2 postcards
Jeu de 2 cartes postales
262179
\$ 3³⁸



Lunar Pack
Pochette-souvenir de la
Nouvelle Année lunaire
341756
\$ 12⁹⁵

Available at participating post offices | Offert dans les bureaux de poste participants ou



Canada/U.S. | Canada/É.-U. : 1 800 565-4362
From other countries:
d'un autre pays : 902 863-6550



www.canadapost.ca/collecting
www.postescanada.ca/collection



From anywhere... De partout...
to anyone jusqu'à vous

Princely Realizations !

From a recent Public Auction sale

\$58,650.



1851 6p Slate Violet
Prince Albert on
laid paper, unused.

\$46,000.



1855 6p Slate Grey
Prince Albert on
wove paper, mint.

\$48,300.



1855 6p Greenish
Grey Prince Albert
on wove paper, mint.

\$12,650.



1859 10c Chocolate
Brown Prince Albert
Perf 11 $\frac{3}{4}$, unused.

Your primary source for rare and unusual material
of British North America and Canada.

Contact us today for a complimentary catalogue
of our upcoming Public Auction sale.

Eastern Auctions Ltd.

P.O. Box 250R - Bathurst - New Brunswick - E2A 3Z2 - Canada

Tel 1(800) 667-8267 - Fax 1(888) 867-8267

E-Mail easternauctions@nb.aibn.com - Web www.easternstamps.com

**THE ROYAL PHILATELIC
SOCIETY OF CANADA
LA SOCIÉTÉ ROYALE DE
PHILATÉLIE DU CANADA**

Patron: Her Excellency The Right Honourable Michaëlle Jean,
C.C., C.M.M., C.O.M., C.D., Governor General of Canada
Présidente d'honneur: Son Excellence la très honorable Michaëlle Jean,
C.C., C.M.M., C.O.M., C.D., Gouverneure générale du Canada

**2007-2008
BOARD OF DIRECTORS –
CONSEIL D'ADMINISTRATION
EXECUTIVE - L'EXÉCUTIF**

President - Président

Rick Penko, FRPSC
Winnipeg, MB
president@rpsc.org

Vice President - Vice-Président

Richard Logan
Ottawa, ON
vice-president@rpsc.org

Treasurer - Trésorier

Peter Kritz
Hanover, ON
treasurer@rpsc.org

Secretary - Secrétaire

Peter Butler
Toronto, ON
pbutler@ilap.com

Past President - Président Sortant

Charles J. G. Verge, FRPSC, FRPSL
Toronto, ON
cjgverge@rogers.com

Directors – Les Directeurs

François Brisse, FRPSC, Beaconsfield, QC
fsbrisse@sympatico.ca

JJ Danielski, Toronto, ON
jjad@rogers.com

Raymond Ireson, FRPSC, Roxboro, QC
info@rpsc.org

Ken Lewis, Swansea, UK
theoldtimer6321@ntlworld.com

Kenneth Magee, FRPSC, Clinton, ON
kmagee@tcc.on.ca

Robert McGuinness, West Vancouver, BC
mrmacis@shaw.ca

Michael O. Nowlan, Oromocto, NB
mgnowlan@nb.sympatico.ca

George Pepall, FRPSC, Kitchener, ON
pepall@rogers.com

David Piercey, Edmonton, AB
david.piercey@epsb.ca

W. John Sheffield, London, ON
john@johnsheffield.com

Editor – Rédacteur

Tony Shaman, FRPSC
PO Box 43103, Eastwood Square
Kitchener, ON N2H 6S9
tshaman@rogers.com

Associate Editor – Rédacteur Associé

Grégoire Teyssier, Sillery, QC
gteyssier@videotron.ca

National Office – Bureau National

Peter Butler, Director / Directeur
director@rpsc.org
Margaret Schulzke, Executive Assistant / Adjointe Exécutive
info@rpsc.org
P.O. Box / C.P. 929, Station, Succ Q, Toronto, ON M4T 2P1
Tel/Tél: (416) 921-2077
Toll Free / Sans frais: 1-888-285-4143
Fax/Télépr: (416) 921-1282
www.rpsc.org

**An invitation to join...
Joignez-vous à...**

**THE ROYAL PHILATELIC SOCIETY OF CANADA
LA SOCIÉTÉ ROYALE DE PHILATÉLIE DU CANADA**

The Royal Philatelic Society of Canada (RPSC) is the successor to the national society founded in 1887. Membership in the Society is open to anyone interested in stamps. Whether you are a beginner or an advanced collector, The RPSC offers a number of services that will be of interest to you. Here are just a few:

THE CANADIAN PHILATELIST - The international award winning bi-monthly magazine of The RPSC, it provides stamp collectors information and news – for members and from the members. Each year, the author of the best article published in *The Canadian Philatelist* receives the Geldert medal.

SALES CIRCUIT - The Sales Circuit is a useful method of disposing of surplus material and acquiring other material for your collection. Details on request.

ANNUAL MEETING - An annual convention held in a different locale each year provides an ideal opportunity to meet friends, exchange ideas, and get advice on your collection or exhibition at which exhibitors can qualify for international shows. You will also get a chance to visit a dealer bourse and attend interesting and informative seminars.

GROUP INSURANCE - Group insurance is available for members to obtain coverage for their personal collections. Chapters can arrange third party liability coverage to protect the club and its events. Both policies have substantially lower premiums than non-members would pay for similar packages. Details are available on both types of insurance, upon request, from the National Office.

CHAPTERS - The RPSC has a network of local clubs across Canada. Chapter meeting details are published in *The Canadian Philatelist*. A great way to network with other collectors in your area.

THE INTERNET - The Society has a Web site www.rpsc.org where members can find out about the latest developments, coming events and link up to many other stamp collecting sites. As a member, your e-mail and Web site address can be added.

OTHER SOCIETIES - As the national society for stamp collectors, The RPSC works in partnership with many other societies and associations, such as the Canadian Stamp Dealers Association and Canada Post Corporation.

CANADA POST - The Society maintains a Canada Post Liaison Officer in Ottawa to represent the Society, its members and chapters and collectors in general. Members may raise issues of mutual interest with Canada Post Corporation through this office.

Join The RPSC!

La Société royale de philatélie du Canada (SRPC) est la digne successeur de celle fondée en 1887. Tout individu intéressé par la collection de timbres-poste peut en devenir membre. Que vous soyez un collectionneur débutant ou chevronné, la SRPC vous offre une gamme de services qui sauront vous intéresser. En voici quelques-uns:

LE PHILATÉLISTE CANADIEN - Cette publication bimestrielle, primée au niveau international, offre aux membres des informations et des nouvelles sur le monde philatélique rédigées par ses membres. Chaque année, la médaille Geldert est décernée à l'auteur du meilleur article publié dans *Le philatéliste canadien*.

CARNETS DE TIMBRES EN APPROBATION - Ils sont disponibles sur demande. C'est une façon facile de disposer de matériel en surplus ou d'acquérir des nouvelles pièces pour sa collection.

RÉUNION ANNUELLE - Une convention annuelle se tient dans différentes parties du pays. Une exposition de niveau national fait partie intégrante de la convention et permet à l'exposant de se qualifier pour les expositions internationales. De plus vous pouvez y visiter les tables de négociants et assister à des conférences.

ASSURANCES - les membres peuvent obtenir une assurance-groupe afin de protéger leurs collections personnelles. Les chapitres peuvent souscrire une assurance responsabilité vis-à-vis des tiers pour protéger un club et les événements qu'il organise. Les primes pour les deux polices sont de beaucoup inférieures à ce qu'un non-membre paierait pour un contrat similaire. Vous pouvez obtenir des renseignements sur ces deux types de police en vous adressant au Bureau national.

CHAPITRES - Des clubs locaux au Canada où les membres de La SRPC reçoivent un accueil chaleureux. Les renseignements sont publiés dans *Le philatéliste canadien*.

L'INTERNET - La SRPC a un site d'Internet www.rpsc.org où les membres obtiennent les informations à date, les événements philatéliques à venir et peuvent accéder à plusieurs autres sites philatéliques.

PARTENARIAT - La Société a des ententes avec plusieurs autres sociétés et associations philatéliques, notamment l'Association canadienne des négociants en timbres-poste et la Société canadienne des postes (SCP).

POSTES CANADA - La SRPC a un agent de liaison situé à Ottawa pour représenter La Société, ses Chapitres, ses membres et les collectionneurs en général auprès de la SCP. Les membres peuvent soumettre des questions d'intérêt commun aux deux Sociétés par l'entremise de cet agent.

Joignez-vous à La SRPC

Membership Application Formulaire d'adhésion

Mr. / M Mrs. / Mme Miss / Mlle Ms / Mdlle Dr. / Dr.

First Name / Prénom:	Middle Initials / Initiales:	Last Name / Nom de famille:
Address / Adresse:		
City / Ville:	Province or State / Province ou État:	
Postal Code / Code postal:	Country / Pays:	
Telephone / Téléphone:		
E-mail Address / Courriel:		
Collecting interests / Intérêts philatéliques:		

The information collected on this form will be used for communications from The RPSC Office and its authorized suppliers. The Society publishes the name of each new member in *The Canadian Philatelist*. Your member information will be held confidential by the Society and will never be sold or traded to advertisers without your prior consent. If you have any questions, please contact The RPSC Office at 1-888-285-4143.

L'information fournie dans ce formulaire nous permettra de vous faire parvenir la correspondance de La SRPC et ses fournisseurs autorisés. La Société publie le nom de chaque nouveau membre dans *Le philatéliste canadien*. La Société assure la confidentialité de vos renseignements et s'engage à ne jamais les vendre ou les échanger auprès de fournisseurs et/ou d'agents de publicité sans avoir obtenu votre autorisation. Pour tous renseignements supplémentaires, veuillez communiquer avec La SRPC au 1-888-285-4143.

Signature

Date

MEMBERSHIP and FEES / TYPES et FRAIS D'ADHÉSION

- | | |
|--|--|
| <input type="checkbox"/> Membership and <i>The Canadian Philatelist</i> – Fee \$35.00 including a one-time \$5.00 application fee. | <input type="checkbox"/> Membre et <i>Le philatéliste canadien</i> – Frais 35,00\$ inclus des frais d'administration unique de 5,00\$. |
| <input type="checkbox"/> <i>The Canadian Philatelist</i> only – Fee \$25.00 | <input type="checkbox"/> <i>Le philatéliste canadien</i> seulement – Frais 25,00\$ |
| <input type="checkbox"/> Membership only – Fee \$15.00 | <input type="checkbox"/> Membre seulement – Frais 15,00\$ |
| <input type="checkbox"/> Life membership – Fee \$600.00 | <input type="checkbox"/> Membre à vie – Frais 600,00\$ |
| <input type="checkbox"/> Family membership – Fee \$35.00 for first member, \$15 each subsequent member | <input type="checkbox"/> Famille – Frais 35,00\$ pour le premier membre, et 15,00\$ chacun pour tous les autres. |

PAYMENT INFORMATION / INFORMATION SUR LE MODE DE PAIEMENT

All fees cover a 12-month period from date of initial publication and/or include 6 issues of *The Canadian Philatelist*. The RPSC reserves the right to adjust the terms. Payable in Canadian Funds if resident in Canada, otherwise payable in US Dollars or its Canadian equivalent. Life memberships are available. Please contact the National Office.

La cotisation couvre une période de douze mois à partir de la date de publication initiale et/ou donne droit à six numéros du *Philatéliste canadien*. Payable en devises canadiennes si résident au Canada et en devises américaines (ou leur équivalent en dollars canadiens) autrement. Des adhésions à vie sont aussi disponibles.

- Cheque enclosed. / Chèque ci-joint.
- Please charge my first year dues and all future payment of dues to my VISA card. / Veuillez porter les frais annuels, incluant les renouvellements annuels futurs à ma carte de crédit – VISA.

Name as appears on VISA card / Nom tel qu'inscrit sur la carte - VISA:

VISA Card Number / Numéro de la carte - VISA:

Expiry Date / Date d'expiration:

Signature

Date

Mail To / Postez à:
The Royal Philatelic Society of Canada / La Société royale de philatélie du Canada
P. O. Box / C.P. 929, Station / Succ "Q", Toronto, ON, Canada, M4T 2P1
Website / site internet: www.rpsc.org

DEPARTMENTS and COMMITTEES / SERVICES et COMITÉS

Canada Post Liaison / Liaison avec Postes Canada

Richard Logan, Ottawa, ON dicklogan@rogers.com

Chapter & Affiliates Liaison / Liaison avec les clubs membres et affiliés

George Pepall, FRPSC, Kitchener, ON pepall@rogers.com

Royale/Royal Conventions, National, Regional & Local Shows / Congrès Royale/Royal, expositions nationales, régionales et locales

Kenneth Magee, FRPSC, Clinton, ON kmagee@tcc.on.ca

CSDA Liaison / Liaison avec l'ACNTP

W. John Sheffield, London, ON john@johnsheffield.com

Development and Planned Giving / Développement et dons par anticipation

Richard Logan, Ottawa, ON dicklogan@rogers.com

Ethics Committee / Comité des plaintes

Col. William G. Robinson, FRPSC, Vancouver, BC info@rpsc.org

50-Year Club/Le Club des 50 ans

Michael Madesker, RDP, FRPSC, President/Président

FQP Liaison / Liaison avec la FQP

François Brisse, FRPSC, Beaconsfield, QC fsbrisse@sympatico.ca

Historian / Historien

Charles J. G. Verge, FRPSC, FRPSL, Toronto, ON cjgverge@rogers.com

Insurance Plan / Plan d'assurances

Peter Butler, Toronto, ON pbutler@ilap.com

International Liaison / Liaison internationale

Charles J. G. Verge, FRPSC, FRPSL, Toronto, ON cjgverge@rogers.com

Legal Advisor

Theodor Kerzner, QC, Kerzner, MacDermid, McKillop, Toronto, ON

National & Regional Judging Program and Coordinator of Reciprocity Agreements / Programme national et régional d'évaluation, et coordonnateur des accords de réciprocité

Dr. David Piercey, Edmonton, AB david.piercey@epsb.ca

National & Regional Medals and Awards / Prix et médailles aux niveaux national et provincial

Raymond Ireson, FRPSC, Roxboro, QC info@rpsc.org

National Office / Bureau national

Peter Butler, Director/ Directeur

Margaret Schulzke, Executive Assistant / Adjointe Exécutive
P.O. Box / C.P. 929, Station, Succ Q Toronto, ON M4T 2P1, CANADA
Tel/Tél: (416) 921-2077, 1-888-285-4143 Fax/Télépr: (416) 921-1282
director@rpsc.org www.rpsc.org

Public Relations / Relations publiques

Michael O. Nowlan, Oromocto, NB mgnowlan@nb.sympatico.ca

RPSC National Exhibits Data / Données sur les expositions nationales de la SRPC

Robert McGuinness, West Vancouver, BC mrmacis@shaw.ca

RPSC Website / Site internet de la SRPC

D. Robin Harris, FRPSC, webmaster@rpsc.org

Sales Circuit / Carnets de timbres en approbation

RPSC Circuits, Box 1109, Cochrane, AB T4C 1B2
Tel/Tél Fax/Télépr: (403) 932-2947 rpsc@telus.net

Slide Program / Diapotheque

Elizabeth Soderer, FRPSC, Halifax, NS sodero@ns.sympatico.ca

T.A.P.E. Executive Director / T.A.P.E. Directeur exécutif

Peter Butler, Toronto, ON pbutler@ilap.com

The Canadian Philatelist / Le philatéliste canadien

P.O. Box/C.P. 929, Station/Succ Q, Toronto, ON M4T 2P1
Editor / Rédacteur, Tony Shaman, FRPSC, PO Box 43103, Kitchener, ON N2H 6S9
tshaman@rogers.com

Advertising: Jim Szeplaki (905) 734-0641, jims@trajan.ca

Youth Education / Éducation de la jeunesse

Yvan Latulippe, St. Joachim-de-Shefford, QC yvan.latulippe@sympatico.ca

LIST OF ADVERTISERS / LISTE DES ANNONCEURS

BNAPS.....	15
Brigham Auctions.....	14
Canada Post.....	2
Canadian Stamp News.....	58
Charles G. Firby Auctions.....	21
Coates & Coates.....	9
CPS of Great Britain.....	11
CSDA.....	15
Eastern.....	3
E.S.J. van Dam.....	31
Gary J. Lyon's.....	63
Greenwood.....	13
Jeff Melski.....	31
John Sheffield Philatelist Ltd.....	9
Maresch, R. & Son.....	64
Mark Lane.....	31
Postal History Society of Canada.....	15
RPSC Research Foundation.....	15
RPSC Sales Circuit.....	55
Saskatoon.....	24
Sparks-Auctions.com.....	17
Vance Auctions.....	31
Vincent Graves Greene Philatelic Research Foudnation.....	17

We acknowledge the financial support of the Government of Canada through the Publication Assistance Program (PAP) toward our mailing costs.

Nous remercions le gouvernement du Canada pour son appui financier pour nos frais de poste par l'entremise du Programme d'assistance aux publications (PAP).

Canada

The Canadian Philatelist (ISSN 00-45-5253) published bimonthly by Philaprint Inc. 10 Summerhill Avenue, Toronto, Ont., M4T 1A8. Printed and produced in Canada by Trajan Publishing Corporation. ©Philaprint Inc. 2008. Opinions expressed herein are those of individual authors only and neither the Publisher nor The Royal Philatelic Society of Canada accepts responsibility for them. Manuscripts should be typewritten or submitted on computer disk. Only original articles will be considered. Books and Literature for review should be submitted to the editor. None of the editor, the Society, the publisher nor any officer or director either incurs any liability for any article or manuscript or any item accompanying such article for photography, all of which are at the sole risk of the person submitting same. Indexed in the Canadian Magazine Index and available online in the Canadian Business and Current Affairs Database. The Publisher reserves the right to decline any advertising and acceptance does not imply endorsement of the product or service.

Subscription price for members of The Royal Philatelic Society of Canada \$25.00 per year. This amount is included in membership fees and the members automatically receive the journal. Non-members \$30.00 per year. Changes of address, undeliverable copies and orders for subscriptions should be sent to PO Box 929, Station Q, Toronto, Ont., M4T 2P1. Return postage guaranteed. Publications Mail Registration No. 09828.

Le philatéliste canadien (ISSN 00-45-5253), bimensuel publié par Philaprint Inc., 10 Summerhill Avenue, Toronto, Ont., M4T 1A8. Fait et imprimé au Canada par Trajan Publishing Corporation. ©Philaprint Inc. 2008. Les opinions émises sont celles des auteurs seulement et ni l'éditeur, ni La Société royale de philatélie du Canada n'accepte leur responsabilité. Les manuscrits doivent être écrits à la machine ou soumis sur disquette d'ordinateur. Seuls les articles originaux seront pris en considération. Les livres et articles à examiner doivent être soumis au rédacteur en chef. Aucune responsabilité n'est acceptée par le rédacteur, la Société, l'éditeur ou tout membre du bureau ou du comité directeur, pour tout article, manuscrit ou tout autre document, comme des photographies, accompagnant ledit article ou manuscrit. La personne soumettant l'article sera seule responsable. Figure à l'Index des magazines canadiens et est disponible sur Internet sous les bases de données de la Canadian Business and Current Affairs. L'éditeur se réserve le droit de refuser toute publicité; l'acceptation n'implique en rien une recommandation du produit ou du service.

Le prix de l'abonnement est de 25 \$ par an pour les membres de La Société royale de philatélie du Canada. Ce montant est inclus dans la cotisation et les membres reçoivent automatiquement le magazine. L'abonnement pour les non-membres est de 30 \$ par an. Les changements d'adresse, les exemplaires non-livrés et les demandes d'abonnement doivent être envoyés à : C.P. 929, Succursale Q, Toronto, Ont., M4T 2P1. Le port de retour est garanti. Le numéro d'enregistrement des éditions est : 09828.

Contents

Table des matières

articles & information

An Invitation to Join / Joignez-vous à 4
 Membership Application / Formulaire d'adhésion..... 5
 Departments and Committees / Services et comités.....6
 Alphabetical List of Advertisers / Liste des annonceurs..... 6
 Editor's Notes / Notes du rédacteur.....8
 In The Mailbox / Dans la boîte aux lettres10
 Exchange / demandes d'échange 11
 Notice to Members / Avis aux membres12
 An Open Letter to RPSC Life Members /
 Lettre ouverte aux membres à vie de la SRPC.....14
 News, Views, & Happenings /
 Nouvelles, opinions et évènements.....16
 Palmares / Résultats42
 President's Page / La page du président.....46
 Membership Reports / Des nouvelles de nos membres47
 Message From the National Office /
 Messages du Bureau national.....48
 Chapter Chatter / Parlons des chapitres50
 Stocks and Bonds Opportunity /
 Les dons d'actions ou d'obligations.....51
 Chapter Meetings / Réunions des clubs membres52
 Coming Events / Calendrier54
 The RPSC Youthphil Club / Le club timbrejeunes SRPC.....56
 Classifieds / Annonces classées 58
 Book Reviews / Ouvrages parus 59
 In My Opinion / A mon avis62

the cover / page couverture:

The earliest mail-carrying bush planes became the lifeblood of far-flung mining operations throughout Canada's far North and West. Fragile aircraft would eventually solve the problem of vast distances separating many isolated settlements and communities located far from rail lines and other means of mail transportation.

One such plane, a Fokker Super Universal, that crashed on takeoff and was badly damaged in 1937, has now been restored. The story of its restoration by a small group of dedicated individuals determined to see it in flight once more carrying mail is related on page 22. *Courtesy: Clark G. Seaborn*

Les premiers avions de brousse qui transportaient le courrier sont devenus le pivot des exploitations minières situées dans les régions éloignées du Grand Nord et de l'Ouest canadiens. De fragiles aéronefs allaient résoudre les problèmes dus à l'immensité qui séparait des communautés et des peuplements isolés, établis loin des chemins de fer des autres moyens de transport du courrier.

L'un de ces avions, un Fokker Super Universal, qui s'était écrasé au décollage, subissant ainsi de lourds dommages, a été restauré. L'histoire de sa restauration par un petit groupe de personnes dévouées, déterminées à le voir voler à nouveau et transporter du courrier nous est racontée à la page 22. *Gacieuseté de Clark G. Seaborn*



An Educational Tour 17



Recapturing History
by Hugh Delaney 22



Charles de Gaulle:
Part 2 of 2
by Richard Logan 28



Finland Celebrates 150
Years of Stamps
by Joseph Monteiro 35



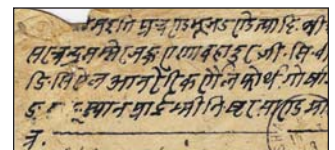
Transcribing Sounds
by Michael Madesker,
RDP, FRPSC 40



Here and There at
Royal*2007*Royale
..... 44



Universal Postal Union
and Imperial Penny
Postage
by George B. Arken, FRPSC
and William S. Pawluk 18



Letter to a King
by Ken Lewis 25



Fundraising for the
Polish Cause in the USA
During WWI - Part VI
by JJ Danielski 32



Santa Letter-writing
Program a Record Affair
by Tony Shaman 39



Varieties
by "Napoleon" 41



EDITOR'S notes notes du RÉDACTEUR

by / par Tony Shaman, FRPSC

Most collectors can probably get excited about an international philatelic exhibition, particularly if it is close to home or reasonably easy and economical to get to. For Canadians, that includes shows such as Pacific '97, Washington 2006 or, in the more remote past, Canada's CAPEX's. Although it is a thrill to attend a world show, most of us do not fully appreciate the tremendous amount of time and work that goes into organizing one of these mega events.

Peter MacDonald, a professional festival and events organizer, walked a group of philatelists attending ROYAL*2007*ROYALE through the process that needs to be followed if Canada is to stage another CAPEX.

Deciding where the show would be held is a prime consideration, explained MacDonald. The selected venue is viable only if the stamp trade supports it. Vancouver, Toronto, and Montreal are obvious choices but smaller centres such as Calgary, Edmonton or Quebec City are among other possibilities. If the exhibition could be combined with a regularly scheduled ROYAL/ROYALE show that would be a plus, according to MacDonald.

Lining up the volunteers, philatelic societies, dealers, sponsors and the professional staff for such an undertaking would just be the beginning of the process. Getting the funding into place is key. MacDonald envisions a budget of around \$3.5 million.

Individuals would also have to be in place who can be relied upon to provide the governance; that is, a group of leaders not afraid to take on working roles. These people would need to set up and control the budget and business plan, identify marketing opportunities, have a clear perception of fundraising objectives, be familiar with the application processing for available funding and most importantly, determine the final venue where the show is to be held. "That would depend on what city really wants to host CAPEX," says MacDonald.

If Canada is serious about hosting another CAPEX, we need to step out of our comfort zones, according to MacDonald. "CAPEX needs to become part of our vocabulary," he emphasized.

La plupart des collectionneurs sont sans doute pleins d'enthousiasme à l'idée d'une exposition philatélique internationale, surtout si elle a lieu près de chez eux ou s'il est relativement facile et peu coûteux de s'y rendre. Au Canada, nous pensons à des expositions comme Pacific 97, Washington 2006 ou, plus près de nous, CAPEX Canada. Visiter une exposition internationale est formidable, mais la plupart d'entre nous n'ont pas idée de la quantité de temps et de travail nécessaire à l'organisation d'événements si gigantesques.

Peter MacDonald, un organisateur professionnel de festivals et d'autres événements, a expliqué à un groupe de philatélistes qui assistaient à ROYAL*2007*ROYALE tout le processus à suivre pour que le Canada puisse tenir une autre CAPEX.

M. Macdonald a fait remarquer que la sélection du lieu de l'exposition est une décision primordiale. L'endroit choisi sera une réussite seulement s'il est soutenu par les négociants de timbres-poste. Vancouver, Toronto et Montréal sont des choix évidents, mais des centres plus petits, comme Calgary, Edmonton ou Québec représentent d'autres possibilités. Il a ajouté que si CAPEX pouvait être annexée à une exposition ordinaire ROYAL*ROYALE* déjà prévue, ce serait un avantage.

Trouver les bénévoles, les sociétés philatéliques, les négociants et le personnel professionnels nécessaires à une telle entreprise n'est que le début du processus. En outre, il est vital d'obtenir du financement. M. Macdonald imagine un budget d'environ 3,5 millions de dollars.

De plus, des personnes fiables devraient assurer la gouvernance, ce qui signifie un groupe de dirigeants qui n'auraient pas peur de mettre la main à la pâte. Ces personnes devraient établir un budget et un plan d'affaires, et veiller à ce qu'ils soient respectés, déceler les occasions de promotion, avoir une idée précise des objectifs de financement, bien connaître les processus de demande de financement disponibles et, plus important encore, prendre une décision sans appel à l'égard de la ville où aura lieu l'exposition. « Cela dépendrait de quelle ville veut vraiment être l'hôte de CAPEX », de dire M. Macdonald.

Selon lui, si le Canada songe sérieusement à tenir une autre CAPEX, il nous faudra sortir de notre zone de confort. « CAPEX devra faire partie de notre vocabulaire », a-t-il insisté.

In our leadoff issue for 2008 we include a review, authored by Joseph Monteiro, of the stamps issued by Finland in 2005 to commemorate the 150th anniversary of its first postage stamp released in 1855.

The second part of Richard Logan's two-part Charles de Gaulle article brings us up-to-date for articles begun in 2007. This biographical piece looks at the last 15 years of the General's life dedicated to his country. Indeed, De Gaulle's entire adult life was spent in the service of France.

Another series coming to a close in our first issue for 2008 is JJ Danielski's article dealing with the Polish fundraising in the U.S. during the World War I era. As we saw in his previous articles, raising funds for the Polish cause in the U.S. enjoyed the support of high-profile Polish celebrities who dedicated much of their time to a cause that left them little other choice. Part 6 in this issue concludes the series by looking at the part played by the Polish White Cross.

Ken Lewis outlines the route of a cover from a Buddhist temple in China to the King of Nepal in Kathmandu, a distance of about 1,300 miles. Why the cover travelled 8,450 miles to traverse the 1,300 miles to its destination is the story behind this cover.

The Universal Postal Union and Imperial Penny Postage are two areas near and dear to the hearts of many postal historians. George Arfken looks at both in his article profusely illustrated with covers to some highly unusual destinations.

We have also included shorter pieces and other tidbits throughout the magazine. We hope you will find them of interest.

Finally, I would like to wish everyone the very best for the New Year. Think positive thoughts and stay well! ☒

Dans le premier numéro du Philatéliste canadien de 2008, Joseph Monteiro nous parle de l'un des timbres émis en Finlande en 2005 pour célébrer le 150e anniversaire de la première émission de timbre-poste qui a eu lieu en 1855.

La seconde partie de l'article de Richard Logan sur Charles de Gaulle nous remet à jour avec une série commencée en 2007. De nature biographique, l'article se penche sur les quinze dernières années de la vie que le général a consacrée à sa patrie. À n'en pas douter, toute sa vie adulte s'est passée au service de la France.

La série d'articles de JJ Danielski sur la cueillette de fonds par des Polonais à l'époque de la Première Guerre mondiale tire aussi à sa fin avec notre premier numéro de 2008. Comme nous l'avons vu dans les articles précédents, cette campagne de financement pour la cause polonaise aux États-Unis a reçu l'appui de célébrités polonaises de très bonne réputation qui ont dédié une bonne partie de leur temps à une cause qui ne leur laissait pas beaucoup de choix. La partie 6, celle du présent numéro, conclut la série d'articles en se penchant sur le rôle de la Croix blanche polonaise.

Ken Lewis décrit le trajet d'un timbre qui a franchi une distance d'environ 2 092 km pour se rendre d'un temple bouddhiste en Chine au roi du Népal, à Katmandou. Pourquoi l'enveloppe a-t-elle parcouru 13 599 km pour franchir les 2 092 km la séparant de sa destination? Voilà l'histoire qui se cache derrière cette enveloppe.

L'Union postale universelle et la poste impériale à un penny sont deux domaines chers au cœur de bien des historiens. George Arfken y pose un regard dans un article abondamment illustré d'enveloppes qui ont été acheminées vers les destinations les plus inusitées.

Vous trouverez également des articles courts et des entrefilets dans toute la revue. Nous espérons qu'ils sauront vous intéresser.

Pour conclure, je souhaite exprimer à chacun mes meilleurs vœux de bonne année. Ayez des pensées positives et portez-vous bien! ☒

CANADA & PROVINCES

Visit our Web site at: www.canstamp.com
or order a FREE catalogue by mail or e-mail.

Bi-Monthly 3000+ lot auctions specializing in items from \$10 to \$10,000.



Coates & Coates Philatelist

Box 114, Thorold, Ontario L2V 3Y7 Canada
Ph: 905-227-8617 • Fax: 905-227-9029
canstamps@gmail.com

WORLD RECORD PRICES!

When the time comes to sell all, or simply a part of your collection, we can assist in obtaining top dollar for your material through one of:

- Public Stamp Auctions
- Private Treaty Department
- Or an offer of Outright Purchase



This strip of four of Canada 1/2c Large Queen paying the scarce 1868 2c Soldier's Rate sold for \$39,000 in one of our past auctions.
A WORLD RECORD price!

John Sheffield Philatelist Ltd.

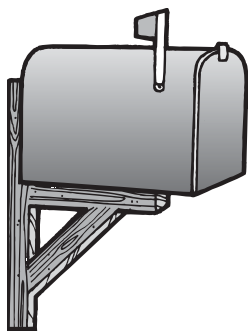
P.O. Box 81-R, Lambeth Stn., London, Ontario, Canada N6P 1P9
Email: john@johnsheffield.com



View each auction (and more) on the Internet

www.johnsheffield.com





in the MAILBOX dans la boîte aux LETTRES

LABELLED

Dear Editor,

In response to Mike Millar's question (*The Canadian Philatelist*, Nov/Dec 2007, pp 330-331), the stamp shown is not a commemorative. For several years, Spain issued a type of stamp which was available only at Spanish post offices and which was once described to me by a Spanish postal employee as "computer-generated". A clerk typed in the required amount of postage on a keyboard, and a self-adhesive stamp, on a backing strip and bearing the corresponding amount, was dispensed. (The stamps were also eventually available at self-serve automatic dispensers at some Spanish post offices.) They were issued from 1989 to the end of 2006. A complete listing may be found at www.correos.es; click on Filatelia, then Emisiones Etiquetas ("etiquetas" means "labels").

These items were also used as postal registration labels. In the attached photocopy (Figure 1), the registration label appears at the top left of the envelope, while the stamp, showing postage of 755 pesetas, appears in its usual place at the top right. Spanish writer and musician Federico Garcia Lorca is featured on the stamp.

I have a number of the Spanish computer-generated stamps in my collection; photocopies of several are attached. Some include a date in the lower left corner, oth-

ers do not. The date often appears when the stamp has been used for mailing an item requiring other than standard domestic, European, or international postage.

Figure 2 shows three examples of the same stamp, one with no additional printing at the bottom and two showing the date as well as the phrase "etiqueta ajuste" ("adjustment label"). On January 25, 2007, I happened to be at a post office in Spain right after it had opened, and the postal clerk was in the process of setting up the computer for the day. She was about to discard the trial labels, but I asked her if I could have them, and she kindly obliged. (Even though the stamps/labels were no longer being issued in 2007, post offices were evidently using up their existing stocks.)

The stamp Mr. Millar asks about depicts a painting, *Adelaida la fantasiosa*, by Igor Fomin, an artist born in Minsk (Belarus) in 1963 and residing in Spain. This stamp was first issued on October 7, 2005. It would appear that the adjustment for the date on which the stamp was generated was not made and thus it appears, incorrectly, as 30JUL00.

Incidentally, many of these stamps make interesting additions to topical collections. It should be noted that they are very difficult to soak off paper and are better kept on paper. In addition, the colours can wash off when the stamps are soaked in water.



Figure 2.

Discussions about this kind of stamp appeared in several issues of *Topical Time*: May-June 1997 ("Jottings from the Editor", p. 22); Sept.-Oct. 1997 ("Topical Postline", p. 10); March-April 1998 ("Topical Postline", p. 10). An article by Robert E. Lana, "Computer-generated stamps appear in Italy", was published in the August 11, 2003, issue of *Linn's Stamp News* (p. 32). Of note as well is Michael Baadke's "Paying a machine to print postage stamps" (*Linn's Stamp News*, May 25, 1998, p. 50), which provides some useful background information about computer-printed postage in various countries.

I hope the above will be of some assistance.

Yours sincerely,

Alena Pascual
Toronto, ON



Figure 1

Dear Editor

The “stamp” that Mike Millar received on a letter from Spain is a label that is becoming common in Europe.

You go to a vending machine, put in the correct change and out comes a self-adhesive label that has the name of the country, the amount of postage, and the exact date and time that the label was purchased printed right on it. No further postmarking is necessary.

The postmark on Millar’s example was entirely superfluous.

I have received several New Year’s wishes from relatives in the Netherlands with these labels, or stamps if you will, on them.



I include scans of two of them. The scans aren’t any clearer than the originals, I’m afraid. I imagine that the labels are stuck on the cover the moment they come out of the automatic machine and the letter is thrown in the letterbox. I receive such mail 1½ days later in Oakville.

The following may be of interested to readers. In the Netherlands, each post office dispatches the collected mail every hour to the country’s central sorting facility and it dispatches it within another hour. These letters are on their way to Canada within three or four hours of being mailed.

All the best,

Ed Matthews L-20040
Oakville, ON

TWICE AS NICE

Dear Editor,

I wish to reply to two letters to the editor in two recent issues of our magazine.

With regard to the letter by Mr. Robert Traquair (Sept/Oct 2007) about my reference to the width of the black edging of mourning covers, I totally agree with Mr. Traquair and his reference work. I simply wanted to portray how the general public perceived the black edging around these covers which was quite different from the official viewpoint. Whether this is to be regarded as a myth or not will always be left for the individual reader to decide.

Concerning the letter from Jack Ince (Nov/Dec 2007) I again totally agree with the points he raised. My routes were gleaned from the book entitled *Across Enemy Lines* published by the American Air Mail Society. This work is quite extensive in its research and contains a vast amount of information.

I appreciate the feedback from these two writers who, in my opinion,

have made points that were succinct, reasoned and structured in a way as to enhance the information available to readers of *The Canadian Philatelist*. Most writers of articles, be they philatelic or otherwise, can only have a limited number of references in their libraries about any particular subject.

One of the joys of writing for such journals as *The Canadian Philatelist* is the free interchange of information among philatelists.

Ken Lewis
Swansea, Wales

CORRECTION

Dear Editor

Please accept my apologies. Due to a “lapsa mensa” I wrote Miami instead of Bermuda in my letter, Route Dispute, in reference to the paragraph on Pan Am FAM 18 route in the November-December 2007 issue (Vol.58, No.6).

Jack Ince
Stirling, ON

EXCHANGE demandes D’ÉCHANGE

My name is Nicholas and I live in Australia. I have a small collection of Canadian stamps and was wondering if there was a stamp collector in your club who would like to swap Canadian stamps for Australian stamps with me. I would love to expand my set and would love to here back from you.

Yours sincerely,

Nicholas
funnybones05@hotmail.com

AN INVITATION TO JOIN THE CANADIAN PHILATELIC SOCIETY OF GREAT BRITAIN

Nearly half our members come from your side of the pond.
They enjoy our quarterly award-winning magazine, ‘Maple Leaves’.
Some of them come to our annual convention.
The 2008 meeting will be in Perth, Scotland from September 24-28.
They can find interesting material amongst the many hundreds of lots that are available at the two auctions we hold each year.

Are you missing out?

For more information write to the Secretary:
John Wright, 12 Milchester House, Staveley Road,
Meads, Eastbourne, East Sussex BN20 7JX
or visit our website.

SUBSCRIPTIONS PAYABLE IN CANADA



www.canadianpsgb.org.uk

NOTICE TO MEMBERS

Please take notice that the Annual General Meeting of the members of The Royal Philatelic Society of Canada (hereinafter called the "Society") will be held at the Gouverneur Hotel, Sainte-Foy, Québec: www.gouverneursaintefoy.com, on Saturday the 17th day of May, 2008, at the hour of 10:00 o'clock in the forenoon (local time) for the purpose of:

1. Receiving and considering the financial statements of the Society as at December 31, 2007, and the reports of the Directors and auditors thereon;
2. The Election of Directors and the appointment of auditors;
3. Considering, and if approved, ratifying, sanctioning and confirming all by-laws, contracts, acts and proceedings of the Board of Directors of the Society enacted, made, done, or taken since the last Annual General Meeting of members of the Society; and
4. The transaction of such further and other business as may properly come before the meeting or any adjournment thereof.

AVIS AUX MEMBRES

Veuillez noter que l'Assemblée Générale Annuelle des membres de La Société royale de philatélie du Canada (ci-après la « Société ») se déroulera à Gouverneur Hotel, Sainte-Foy, Québec: www.gouverneursaintefoy.com, le samedi 17 mai, 2008, à 10 heures (heure locale) avec à l'ordre du jour:

1. La réception et l'examen des relevés financiers de la Société en date du 31 décembre 2007, et des rapports des directeurs et vérificateurs sur le sujet;
2. L'élection des directeurs et la nomination des vérificateurs;
3. L'étude et, en cas d'approbation, la ratification, l'autorisation et la confirmation des tous statuts, contrats, actes et délibérations du Conseil d'administration de la Société qui auront été décrétés, passés, effectués ou arrêtés depuis la dernière Assemblée Générale Annuelle des membres de la Société; et
4. La transaction de décisions comparables et autres questions devant être traitées à la réunion ou avant son ajournement.

NOTICE TO MEMBERS

A Call for Nominations of Directors of The Royal Philatelic Society of Canada is hereby set forth.

Eight (8) Directors will be elected at the Annual General Meeting to be held in Sainte-Foy, Québec, at ROYAL *2008* ROYALE on May 17, 2008.

"Nominations must be in writing and be made and seconded by members in good standing of the Society. The person nominated must consent to his or her nomination and such nomination, to be valid, must be received by the National Office by February 1, 2008. All nominations will be placed before the Nomination Committee who will prepare a slate of Directors of those nominated to ensure national representation based on levels of membership."

The proposed slate of Directors will be published in the March/April 2008 issue of *The Canadian Philatelist* along with a short biography of each nominee. Nominees should provide a photograph suitable for publication and a short biography with their nomination papers.

AVIS AUX MEMBRES

Ceci est un appel pour la nomination de candidat(e) s au poste de directeur de La Société royale de philatélie du Canada.

Huit (8) directeurs seront élus à l'Assemblée Générale Annuelle qui se tiendra à Sainte-Foy, Québec, à ROYAL *2008* ROYALE le 17 mai, 2008.

« Les nominations doivent être présentées par écrit et faites et secondées par des membres en due forme de la corporation. La personne présentée doit être d'accord avec sa nomination. Les nominations doivent être reçues par le bureau national au plus tard le 1er février, 2008. Toutes les nominations seront envoyées au comité de nomination qui établira une liste de candidat(e)s pour assurer une représentation nationale basée sur le ratio des membres. »

La liste des candidat(e)s proposé(e)s sera publiée dans *Le philatéliste canadien* de mars/avril 2008. On y inclura une courte biographie de chaque candidat(e). Les candidat(e)s doivent faire parvenir une photo qui peut-être reproduite ainsi qu'une courte biographie avec leurs documents de nomination.



Dated this 10th day of December 2007.
By Order of the Board
Peter Butler
Secretary



Fait le 10e jour de décembre, 2007.
Par ordre du Conseil
Peter Butler
Secrétaire

WANTED

We can sell your Canadian or foreign stamp collections or accumulations on consignment for the nominal fee of 10%.

Please enquire before forwarding material.

R.F. NARBONNE, FRPSC, OTB

Telephone 1-613-278-1555

Call Toll Free 1-800-247-5619

(Canada Only)

GREENWOOD STAMP COMPANY

PO Box 102

McDonalds Corners,
Ontario K0G 1M0

– *Since 1962* –

AN OPEN LETTER TO THE RPSC LIFE MEMBERS

Dear Fellow "Lifers",

The purchase of a Life Membership in The Royal Philatelic Society of Canada indicates a trust in its aims and ideals, and a belief in the future of the hobby. In excess of 500 philatelists have made that commitment over the years. A great majority of us enjoy the benefits of our dedication even today.

The cost of a Life Membership is calculated on the income that the invested funds will bring to maintain services to its subscribers. I bought my Life Membership when a cup of coffee cost 10 cents, and that included a refill! Needless to say, the invested funds no longer cover the services The Royal provides me with. The unfair distribution of costs falls now on the shoulders of incoming new regular members.

Many Life Members find philately a way to renew old friendships and stimulate their minds. It is an outlet for many things we had to leave in abeyance while raising our families and earning a living.

Our present involvement in philately, whether passive or active, brings us renewal of our lives and interests. Now is the time to renew our Life Memberships by making a new commitment.

BUY A LIFE MEMBERSHIP – I have.

Thank you in advance for considering your renewed faith in our society.

Michael Madesker, RDP, FRPSC

LETTRE OUVERTE AUX MEMBRES À VIE DE LA SRPC

Chers amis « à vie »,

L'achat d'une adhésion à vie à La Société royale de philatélie du Canada démontre une confiance en ses objectifs et en ses idéaux ainsi que la foi en l'avenir de notre passe-temps. Plus de 500 philatélistes ont fait un tel choix au fil des ans, et la grande majorité en retire des avantages encore aujourd'hui.

Le coût d'une adhésion à vie est calculé d'après le revenu que les fonds investis rapporteront pour maintenir les services aux abonnés. J'ai acheté la mienne alors qu'une tasse de café coûtait dix cents, réchauffement compris! Il est inutile de dire que les fonds investis ne couvrent plus les services que me fournit La Royale. Les nouveaux membres réguliers font donc les frais d'une distribution inévitables des coûts.

De nombreux membres à vie considèrent la philatélie comme un moyen de renouer de vieilles amitiés et de stimuler leur esprit. C'est aussi une façon de retrouver bien des choses que nous avions mises en suspend pendant que nous élevions nos familles et que nous devons gagner notre vie.

Notre participation actuelle à la philatélie, qu'elle soit active ou passive, renouvelle notre vie et nos intérêts. Le temps est maintenant venu de renouveler notre adhésion à vie par un nouvel engagement.

Faites comme moi – DEVENEZ MEMBRE À VIE

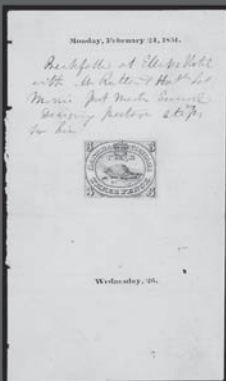
Je vous remercie à l'avance de penser à renouveler votre confiance en notre société.

Michael Madesker, RDP, FRPSC

BRIGHAM AUCTIONS

Specializing in the Fine Art of Philately

Why not sell your Canada and British North America in Canada where it belongs?



Since 1999 we have continued to successfully serve the BNA collecting public as we started. We are collectors first. We know what collectors want. Not only when they buy but also when they sell. Have you been unlucky in your dealing with other auctioneers or dealers? Try us out.

As collectors we recognize quality. As collectors we respect your treasures as if they were ours and we will treat them as such. We care. We are the auction firm run by collectors for collectors. Contact us, we offer:

- Free appraisals
- Free advice on methods of disposal
- Free Estate planning advice
- Free bidding tips

WE TRAVEL FOR WORTHWHILE CONSIGNMENTS
 CONSIGNMENT OR OUTRIGHT SALE
 33 YEARS OF AUCTION EXPERIENCE
 COMPETITIVE COMMISSIONS

Write, phone, fax or e-mail us for a complimentary catalogue for our next auction.

Brigham Auctions Ltd.

1120 Brevik Place, Mississauga, Ontario, L4W 3Y5, Canada

Phone: (905) 238-1634 Fax: (905) 238-8399 E-mail: brigham@interlog.com



PHSC

APS Affiliate 67;
PHS Inc. Affiliate 5A;
RPSC Affiliate 3

The **Postal History Society of Canada** was founded to promote the study of the postal history of Canada and its provinces. It publishes the quarterly **PHSC Journal**, whose contents range from fully-researched feature articles to items of current interest – from the pre-stamp era through postmark specialties and regional histories to modern mail mechanization.

Each year the Society holds meetings at shows across Canada. The Annual Meeting is held in the early summer, and is supplemented by Regional Meetings, usually featuring postal history seminars given by Society members. Eight different Study Groups are devoted to the detailed examination of various specialized aspects of postal history.

Membership dues are \$25.00 per year, with a one-time admission fee of \$1.00. For a membership application form please contact the Secretary, Stéphane Cloutier, 255 Shakespeare St., Ottawa, ON K1L 5M7 Canada. E-mail: cloutier1967@sympatico.ca.

This Symbol



is your assurance that the dealer displaying it has subscribed to a high standard of business principles and ethics. When you are buying or selling stamps, covers or postcards, you should look for dealers displaying this logo. We are the professional Association to which they belong.

The Canadian Stamp Dealers' Association

P.O. Box 1123, Adelaide Street P.O.
Toronto, ON M5C 2K5
www.csdaonline.com

You're invited to join The British North America Philatelic Society

BNA Topics, quarterly journal

BNA PortraitS, quarterly newsletter

Benefits include:

- Annual conventions in the U.S. and Canada.
- More than 20 study groups actively investigating specialty areas, ranging from Large Queens to first day covers.
- Regional groups located in many cities in Canada and the U.S.

Contact the Secretary:

Peter Jacobi

#6 – 2168-150A St.

Surrey, BC V4A 9W4 Canada

e-mail: pjacobi@shaw.ca

Web site: <http://www.bnaps.org>



BNAPS – The Society for Canadian Philately

RPSC

PHILATELIC
RESEARCH
FOUNDATION



SRPC

FONDATION DE
RECHERCHE
PHILATÉLIQUE

An Introduction to Youth Philately

A 55 page monograph in colour teaches the fundamentals of philately for young collectors.

Originally written for FIP's Commission for Youth Philately by the Federation of Swiss Philatelic Societies in German/French. Now English editions have been prepared by Michael Madesker and produced by the RPSC Philatelic Research Foundation.

Excellent for teaching seminars at youth stamp clubs and as a reference manual for young collectors. Regular price is \$15 to cover publication and mailing costs. A special price of \$8 applies for young collectors (21 and under), or teachers and others running youth stamp clubs.

Purchase a copy from the

RPSC Philatelic Research Foundation

c/o Ted Nixon

255 Cortleigh Blvd.

Toronto, ON M5N 1P8

Enclose cash or cheque payable to:
RPSC Philatelic Research Foundation.

news, views & HAPPENINGS

nouvelles, opinions et ÉVÈNEMENTS

Top Honours at Calgary Show

Victor L. Willson and Kevin O'Reilly won the top awards at BNAPEX 2007, the 59th annual convention of the British North America Philatelic Society held over Labour Day weekend in Calgary. The Society is an organization of collectors of the stamps and postal history of Canada and its pre-confederation colonies.

Willson, from College Station, Texas, displayed his collection of *Canada 19th Century Non-Letter Mail* to win the Grand Award. The collection contains examples of newspaper, printed matter, parcel post, and sample postal rates of the Victorian Era and covered both domestic use and those to foreign destinations. Striking are the newspapers bearing stamps that he has amassed. Willson said that he had been forming the collection over a span of 25 years. .

The Reserve Grand Award went to Kevin O'Reilly of Yellowknife, Northwest Territories, for his *A Postal History of Labrador before Confederation*. O'Reilly indicates the rarity of this material by noting that the time of Confederation with Canada in 1949, Labrador had only 6,000 residents. He opens the collection with a 1787 letter carried by ship along the North Shore. It was not until 1863 that the first organized service began with a contract providing for summer mails to Newfoundland. By the 1880s mails from Quebec had extended to the Straits of Belle Isle. His exhibit showed examples of mail carried by Dog Team, Traveling Post offices, and by air after the opening of a World War II base at Goose Bay in 1942.

Grants Available

Organizations or schools planning new or expanded activity in support of stamp collecting by youth in 2008 may qualify for limited funding from the British North America Philatelic Society. Now in its third year, the Society's program offers financial grants to encourage philatelic activity among children and young adults.

In 2007, the program funded 17 different programs in the United States and Canada. Grants ranged from \$65 to \$400. In some cases the grant was accompanied by a supply of several thousand stamps for distribution. Programs supported included a number of new school stamp clubs, a first day cover design contest, and youth activities at several stamp shows.

Application forms are available from www.bnaps.org or from Bob Dyer, British North America Philatelic Society, 1708 Granada Court, Petaluma, CA 94954. The deadline for applications is May 1, 2008.

Jury Finalized and Exhibits Invited for APS AmeriStamp Expo 2008 in Charlotte

The jury has been finalized and the prospectus and entry forms are now available for the Open Philatelic Exhibition at AmeriStamp Expo 2008, the annual winter meeting of the American Philatelic Society. The three-day exhibition and bourse will take place January 11-13 at the Charlotte Convention Center at 501 South College Street, in Charlotte, North Carolina.

Chaired by Peter McCann, the jury that will judge the philatelic exhibits at the show is scheduled to include John Allen, Mark Banchik, Ronald Leshner Sr., Thomas Myers, Ann de Bayley Nicoll, Roger Schnell, Phillip Stager, and Jay Stotts.

The exhibition at AmeriStamp Expo 2008 will consist of approximately 325 frames. Of these, 35 will be reserved for the annual Single Frame Championship. The remaining 290 frames will be broken down roughly as follows: Single Frame – 65, Most Popular Championship – 50, Cinderella – 35, Display – 50, Illustrated – 50, and Postcard – 50.

To be eligible to compete in the Single Frame Championship, an exhibit must have received 95 points using the American Association of Philatelic Exhibitors (AAPE) single frame criteria, or have received a single frame grand award at a World Series of Philately-qualifying show within the last three years. The best exhibit in this class will be crowned the Single Frame Champion of Champions. AmeriStamp Expo 2008 will again feature an innovative single-frame team competition. Each exhibitor in the five-member teams displays a single-frame exhibit, three of which must not have been shown previously at any national or international show. In addition, each one of the five frames shown by a team must be of a different type than those submitted by the other team members. Types include traditional, postal history, postal stationary, thematic, display, revenue, aerophilately, astrophilately, illustrated mail, Cinderella/poster/promotional and special studies exhibits.

Exhibitors may obtain the AmeriStamp Expo 2008 prospectus and entry form by writing to the American Philatelic Society, 100 Match Factory Place, Bellefonte, PA 16823-1367, calling 814-933-3803 extension 207, sending a fax to 814-933-6128, by e-mail, or online.

AN EDUCATIONAL TOUR

Members of the Kitchener-Waterloo stamp club recently toured their nearby Hamilton Mail Processing Plant where, in addition to the local Hamilton-Burlington mail, letter mail from the K-W region as well as mail from as far away as Niagara Falls is processed.

More than 600 people are employed in the modern-equipped facility that opened in 1990.



Although there is a mail processing plant in Kitchener, it handles only parcel post.

In 2006, the Hamilton plant processed about 500 million pieces of letter and ad mail. ✉

LEFT: Several members of the group pay close attention to the erudite explanation of how incoming and outgoing mail is handled by way of the 38,152 square meter building's 36 receiving and despatch dock doors.

ABOVE: Canada Post's Kraft Chine, tour guide for the evening, explains the significance of the postal code and bar coding for proper machine sorting of letter mail.



Vincent Graves Greene Philatelic Research Foundation

Canada's Premier BNA Expertizing Service

NEW PUBLICATION
– Illustrated in Full Colour

The Pence Covers of Nova Scotia & New Brunswick 1851-1860

by George Arfken, FRPSC & Charles G. Firby

- Over 300 pages • 8½ x11 format • hardbound
- \$115 CAD if posted to a Canadian Address
- \$115 USD if posted to an International Address

Order from:

Vincent Graves Greene
Philatelic Research Foundation
10 Summerhill Avenue
Toronto, Ontario, M4T 1A8 Canada
Ph: 416.921.2073
vggfoundation@on.aibn.com
www.greenefoundation.ca



SPARKS-AUCTIONS.COM

UNIVERSAL POSTAL UNION AND IMPERIAL PENNY POSTAGE

George B. Arfken, FRPSC and William S. Pawluk

Universal Postal Union

It was 1897, the year of Queen Victoria's Diamond Jubilee. Canada's letter rate to the United Kingdom and to almost all other overseas countries was the Universal Postal Union (UPU) 5 cents per half ounce^[1]. We illustrate this UPU rate in Figure 1 with a double rate cover.



Figure 1. Posted in Halifax, November 6, 1897 and addressed to England. The two 5-cent Jubilees paid double the UPU rate, for up to 1 oz.

At this time all UPU matter could be registered. The rate was 5 cents per item. An example of a registered cover to a very unusual destination is shown in Figure 2. The 5-cent Maple Leaves stamps on the cover were issued December 10, 1897 replacing the 5-cent Jubilee. Complying with a UPU regulation, the large R-in-oval was Canada's symbol for registration.



Figure 2. Registered in Middletown (Annapolis), N.S., February 28, 1898 and addressed to Zanzibar, Africa. 5-cent registry fee and 5 cents postage paid with two 5-cent Maple Leaves. London 11 MR 98 transit stamp and Zanzibar 5 AP 1898 backstamp, 36 days transit time. The red box contains the word "Deceased". Zanzibar was a British protectorate 1890 - 1963. Courtesy of Charles A. Jacobson.

A 4-fold rate cover, franked with a 20-cent Edward is shown in Figure 3. A single use 20-cent Edward is rarely seen on letter mail. It was needed on parcels paying higher rates such as money packets and international parcel post.



Figure 3. A cover to France franked with a 20-cent Edward to pay the 4-fold UPU rate, up to 2 oz. The cover was posted in Toronto, February 8, 1907. Courtesy of Alan Selby.

The 1906 UPU Treaty of Rome, effective October 1, 1907, made changes in the UPU regulations. Two of these were:

- (1) The weight basis was changed from ½ ounce to 1 ounce.
- (2) a. The first ounce was charged 5 cents.
b. Each additional ounce was charged 3 cents.

Figure 4 presents a striking illustration of these new UPU regulations. The stamps are Canada's second commemorative series, the Quebec Tercentenary Series of 1908. These stamps had just been issued 11 days before their use on the cover of Figure 4. Notice that the four digit registry number 8297, stamped at Montreal, is enclosed with a red handstamp. UPU regulations required that the original registry number be encircled or otherwise identified.



Figure 4. From the Royal Swedish Consulate, Montreal, July 27, 1908, addressed to Stockholm, Sweden. Three 5-cent Quebecs and a 1-cent Quebec paid the 5-cent registry fee and 11 cents postage, paying for up to 3 oz. Yes, it is a big envelope, 9.4 inches long.

First ounce..... 5 cents Second ounce.....3 cents Third ounce..... 3 cents Total..... 11cents postage.

Imperial Penny Postage

The UPU recognized the right of pairs or groups of countries in the Postal Union to agree on special rates among themselves as long as these special rates did not exceed the UPU rates. Canada and the U.S. had special rates equal to their own domestic rates for mail between them. In 1896, Postal Officials of the United Kingdom and members of the British Empire met and attempted to set up a common reduced rate for mail among the various parts of the Empire. Canada's Postmaster General Sir William Mulock was a leader in this endeavour but the attempt failed. At the July 1898 Imperial Postal Conference, there was a crucial compromise: membership in the new postal arrangement would be optional, not mandatory. The new system called for a rate of one British penny per half-ounce and so was called Imperial Penny Postage (IPP). This British penny was equivalent to 2 cents Canadian.

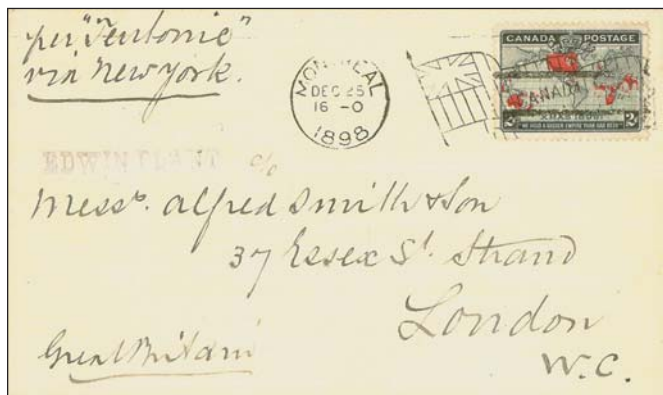


Figure 5. Imperial Penny Postage to London, Great Britain. This cover was posted in Montreal, December 25, 1898 and sent to London via New York. The Map stamp was cancelled with a Montreal flag.

Imperial Penny Postage went into effect on Christmas Day, December 25, 1898. Figure 5 shows a first day of rate cover franked with Canada's Map stamp issued for this occasion.

A Department Circular dated December 31, 1898 listed 37 "possessions of the British Empire" that had joined IPP by that date. In addition to these 37, there were the United Kingdom and Canada. Another 19 colonies joined during the coming decade^[2].

New Zealand did not join IPP until January 1, 1901. New Zealand, Australia and some other colonies had serious concerns about the costs of subsidizing the shipment of letters over extremely long distances such as half way around the world. Figure 6 shows a cover to Auckland, New Zealand paying the 2 cents IPP.

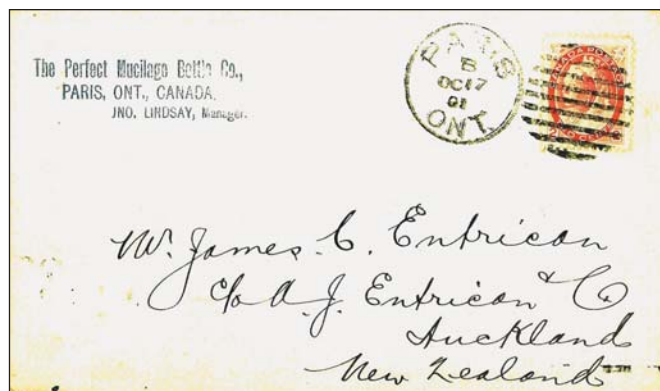


Figure 6. Mailed in Paris, Ont., October 17, 1901 and sent to Auckland, New Zealand via San Francisco. A 2-cent Numeral paid the IPP rate. There are Hamilton OCT 17, San Francisco OCT 26 and Auckland DE 03 backstamps. So the transit time was 47 days! (The cover may have gone via Sydney, N.S.W.)

An IPP cover to Mauritius in the Indian Ocean is shown in Figure 7. Mauritius joined IPP on July 1, 1899. Note that this cover went transatlantic while the cover to New Zealand went transpacific.



Figure 7. Registered in Yarmouth, N.S., February 8, 1902. Addressed to Mauritius, the cover went via London, England receiving crossed blue lines to identify registration and a 21 FEB 02 registration handstamp. A 5-cent Numeral paid the registry fee. The cover arrived in Mauritius 20 MR 02, 40 days transit. The 2-cent Numeral and the 2-cent entire (EN13) paid a double IPP rate for up to 1 oz.

Effective October 1, 1907, the IPP rate went from a British penny per half ounce to a British penny per ounce. The actual wording of the October 1907 Quarterly Supplement was:

The postage on letters to Great Britain, Egypt and all parts of the British Empire, which has hitherto been 2 cents per ½ ounce or fraction thereof, will be 2 cents per ounce or fraction thereof.

Illustrating this new IPP rate, Figure 8 shows a registered, 3-fold rate IPP cover. The last half cent rate (newspapers and periodical weighing not over 1

ounce) had been eliminated in May 1909 but half cent stamps were still valid for helping pay higher rates.



Figure 8. Registered in Toronto, March 8, 1910 and addressed to London, England. Twenty-two half-cent Numerals paid for 5-cent registration and 6 cents postage. That postage paid for up to 3 ounces at the IPP rate of 2 cents per ounce. Courtesy of Longley Auctions.

A double rate IPP cover, paid 4 cents for up to 2 ounces, could hold up to 10 full size pages in a No. 10 (large) envelope. Few letters required more than 10 pages (20 sides) of paper. Consequently 3-fold and 4-fold IPP rate covers in this period are rare. ☒

References:

- [1] This article was adapted from *A Canadian Postal History, 1897 - 1911* by Arfken and Pawluk.
- [2] Pawluk, William S. *Canada: Postal Regulations, Rates & Usages, Domestic and International Mail, 1897 - 1911*, British North America Philatelic Society, Exhibits Series No. 15, 1999.

The Canadian Philatelist Searchable Database • found at www.rpsc.org

Each issue of *The Canadian Philatelist* (up to five years ago) has been scanned and assembled into PDF files for on-line viewing (each issue is in one complete PDF file). You can now search a database that contains each article's Title, Author (last name and initial), Topic (and sub topic in most instances), Year of publication, Volume and Number.

La base de données interrogeable du Philaléliste canadien se trouve dans le site www.rpsc.org

Chaque numéro du Philaléliste canadien (des cinq dernières années) a été numérisé et assemblé en fichier PDF afin d'en permettre la visualisation en ligne (un fichier PDF par numéro).

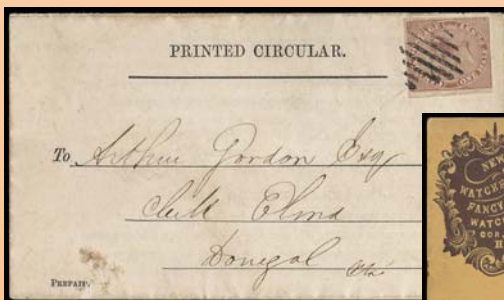
Vous pouvez maintenant faire une recherche dans une base de données qui comporte le titre de chaque article, le nom de l'auteur (nom de famille et initiales), le sujet (et les sous-sujets dans la plupart des cas), l'année de publication, le volume et le numéro.

WE ARE STILL NUMBER ONE in the record setting business.

We have done it before and
with your collection we can do it again

After 20+ years of being the top British North American philatelic auction firm, our recent offering of the Warren S. Wilkinson **Canadian Pence Period Postal Rates** collection once again, affirms our leadership status.

In fact, this 344 lot auction, conducted June 14, 2007, which realized in excess of US\$2.5 million, exceeded all of our previous auction realizations and was **the highest grossing Canadian Philatelic auction ever conducted.** See more highlights:



REALIZED \$9,775.00



REALIZED \$16,100.00



REALIZED \$7,475.00



REALIZED \$18,400.00



REALIZED \$2,875.00



REALIZED \$19,550.00

Philatelic Trader
35+ Years

Philatelic Auctioneer
20+ Years

Go to FirbyAuctions.com to view the entire sale.

If you have a collection that requires the *Masters* touch **contact Charles at your earliest convenience** to discuss how he can help you realize your goal, or to order one of the few remaining Wilkinson special trend setting handbook/catalogues with prices realized: Only US\$120.00 including shipping.

6695 Highland Road, Suite #101
Waterford, MI 48327-1967 USA
(248) 666-5333 • Fax (248) 666-5020
Toll Free (888) FirbyUS

Admin@FirbyAuctions.com • www.FirbyAuctions.com



Charles G. Firby
AUCTIONS

RECAPTURING

By Hugh Delaney

HISTORY

A restored *Fokker Super Universal* aircraft carrying mail to relive those moments in history when the challenge of flight was still in semi infancy commemorated two major events in Western Canadian aeronautical history.

The story begins in December 1937 when a Northern Airways plane with the markings CF-AAM attempted to take off from a snow-covered runway in Dawson, Yukon Territory, the territorial capital at the time. The plane could not get up enough speed and skidded into a ditch at the end of the runway. The six passengers, gold miners and the pilot, Les Cook, escaped with minor injuries. As they had no facilities for repairing the damaged aircraft the company abandoned the wreck.

It was in 1981, 44 years later that a Calgary engineer, Clark Seaborn, recovered the remains of the wreck and started a 17-year work of love to restore the airplane for the Western Canada Aviation Museum in Winnipeg. To accomplish this task required a long persistent search for parts that could be salvaged from other wrecks and to locate the design drawings and other required artefacts. They were finally located in a storage facility of the U.S. Federal Aviation Authority in California.

Two other enthusiasts, Don McLean and Ron Jackson of Calgary, both skilled craftsmen worked with Clark as did several other interested and skilled people. What they could not find they remanufactured. One example was the wing which used 600 pieces of wood and over 90,000 brass nails. According to Seaborn, the shop work and 10,000 hours of painstaking labour resulted in an airworthy craft that was originally one of nearly 30 that were used to open up the North and West of Canada to air service and mail delivery.

On May 25, 2000, the first of two events was recreated by Clark Seaborn and the restored *Fokker* when it flew from a small vintage airfield near Calgary. It carried a bag with 3,538 pieces of

mail on a return trip from Calgary to Medicine Hat, emulating the beginning of daily airmail service on the Prairies linking Calgary, Lethbridge, Medicine Hat, Alberta, Moose Jaw and Regina in Saskatchewan, Winnipeg, Manitoba, Saskatoon, North Battleford Saskatchewan, and Edmonton, Alberta. The event was a project of the Canadian Aviation Historical Society for their Calgary May 25-27, 2000 Convention.

The service proved to be a success and allowed for mail delivery in record time.

Pictured is a cover from that first flight from Medicine Hat to Winnipeg. Carried also were covers from Calgary to Medicine Hat and return on May 25, 2000, signed by the Pilot Clark Seaborn. Shown also is a picture taken prior to the flight as a reconstructed vintage Royal Mail truck delivered the mail to be carried by Clark Seaborn who is seen standing under the wing while Alderman Bob Hawksworth, representing the City of Calgary and Teresa Williams representing Canada Post, are both dressed in period costume. Members of the Calgary Chapter of the British North America Philatelic Society assisted with the event, arranging for a suitable cancel for both cities. Pilot Clark Seaborn signed 500 envelopes.

Next, in June of 2001, Yukon citizens, relived an event from the 1930s when the *Fokker* aircraft, piloted by Seaborn began flying to various points



around the Territory. The flight was made possible with the assistance of Don McLean and Bob Cameron of Whitehorse who helped find parts for the aircraft and had experience with flying services. Cameron's father, Gordon Cameron, had served as Commissioner of the Yukon.

The plane carried 200 covers on each of six different routes, over a four-day period. The plane and crew was greeted enthusiastically at each stop. In Mayo, four beauties, young dancers from a local follies celebration, gave their approval of the visit to their community by doing a classic cancan dance atop the aircraft's wing.



Photo: Courtesy Clark Seaborn.

Following the Yukon Tour, Clark joined a rally of vintage aircraft for a tour of the United States. He subsequently delivered the *Fokker* to a static display at the Western Canada Aircraft Museum in Winnipeg.

Pictured are covers with cachets and special cancels from some of the Yukon towns that were visited. As well, the plane with the dancers on the wing for the Mayo stop shows Clark standing by the plane with Don McLean on his right and Bob Cameron on his left.

The two events were part of the history of the Prairies and Yukon Territory. ✉

References:

Recollections of Clark Seaborn,
The Calgary Herald, Feb 14, 2002



Photo: Courtesy Clark Seaborn.



CANADA • BNA

From Choice Classics to Modern Errors & Varieties



Our Specialty...



...The Unusual



View and shop our on-line database of Canadian and BNA stamps at:

www.saskatoonstamp.com

Our web site offers an **on-line shopping cart** where you can look through and order from our large stock of **Canadian and BNA** stamps and literature. You can also start a **want list**, see which **upcoming shows** we will be attending, find out what kind of material we are **looking for**, and much more.

FREE ON REQUEST:

*Our current private
treaty catalogue of
Canadian and BNA stamps.*

Call, Fax, E-mail or Write.

WANTED: CANADIAN ERRORS

We are always on the lookout for new and better errors and varieties. Let us know what you have for sale.

IMPERFS - MISSING COLOURS - INVERTS - MISPERFS - COLOUR SHIFTS - PRINTED ON GUM - BETTER VARIETIES



WANTED: NEWFOUNDLAND GUY ISSUE of 1910-11 (#87-103) and 1914 Money Order Tax overprint (#NFM 1) and all varieties. Proofs, mint or used multiples, Whitehead Morris trade sample sheets of 4, in any color and singles and pairs from those that were cut up. Any Die Proofs would be wonderful. Just getting started on Postal History of this issue so other covers are of interest, particularly usages to anywhere outside of Newfoundland with any combination of stamps. Single usages of any values other than 1¢ & 2¢ and these are still of interest if they carry nice clear postmarks of smaller Newfoundland towns. On this issue I'm a collector, not a dealer, so you don't have to be kind on pricing - Kind is you offering me the opportunity to acquire some neat items that will enhance the collection. Please phone or fax John Jamieson at Saskatoon Stamp Centre or email directly at ssc.john@saskatoonstamp.com

Internationally Recognized as a Leading Dealer in Canadian Errors and Varieties

SASKATOON STAMP CENTRE

P.O. Box 1870, Saskatoon, SK, S7K 3S2 Canada
Call TOLL FREE 1-800-205-8814 in North America
Phone: (306) 931-6633 Fax: (306) 975-3728



Web site: www.saskatoonstamp.com

E-mail: ssc@saskatoonstamp.com

Letter to a King

By Ken Lewis

Located on Emei Mountain, near Chentu, in Szechewan Province in the western parts of China, was a Nepalese monastery where the monks were doing missionary work. Many religions exist in Nepal. The most popular today is Hinduism; in 1909 it was Buddhism. This is the story of a cover that was sent from the Buddhist temples on Emei Mountain to the Maharajah, or King, of Nepal.

During the research into the background of this particular cover, a number of unusual facts were unearthed. For example, a monk travelling on foot carried the cover for the first 150 miles. It then went by river for the next 1,500 miles, by sea for another 5,000 miles, by train for 1,750 miles, and the final 200 miles again by foot. An alternative route would have been only 1,300 miles over the Himalayan mountain range. But that route would have been very treacherous, especially in the month of February. (We will maintain the spelling of Chentu as shown on the postmark throughout the article, notwithstanding the various spellings on the different maps.)

The Temples (or Monasteries)

Buddhist temples were set up at Emei Mountain, 150 miles to the south-south-west of Chentu in the south-western corner of China. Monks from Nepal had established the temples with the intention of promoting their religion by crossing the Himalayan mountain range by one of the Silk Roads leading through Tibet and eventually into China. At the time, there were no roads as such, just well trodden paths used by local inhabitants between Nepal and Tibet and into China. To get an idea of how these monasteries were laid out, see Figure 1. It also shows a typical layout of one of these monasteries contemporaneous with the cover.

The 'Royal' family of Nepal

Until 1846, the King ruled Nepal but due to a series of events he became little more than a puppet. The Prime Minister gained control of the country and ran it as the head of state; the King's role became ceremonial. After the Prime Minister, Chandra Rana, had seized power, he bestowed the title of 'shree shree shree Maharajah' on himself. This compares with the title of the King which was 'shree shree shree shree shree Maharajah'. The highest title in Nepal had five shree's and was only permitted for those of Royal descent. All other titled noblemen had a lesser number of shree's. The reign of the Ranas lasted until 1951 when the Royal Family was reinstated as head of state.

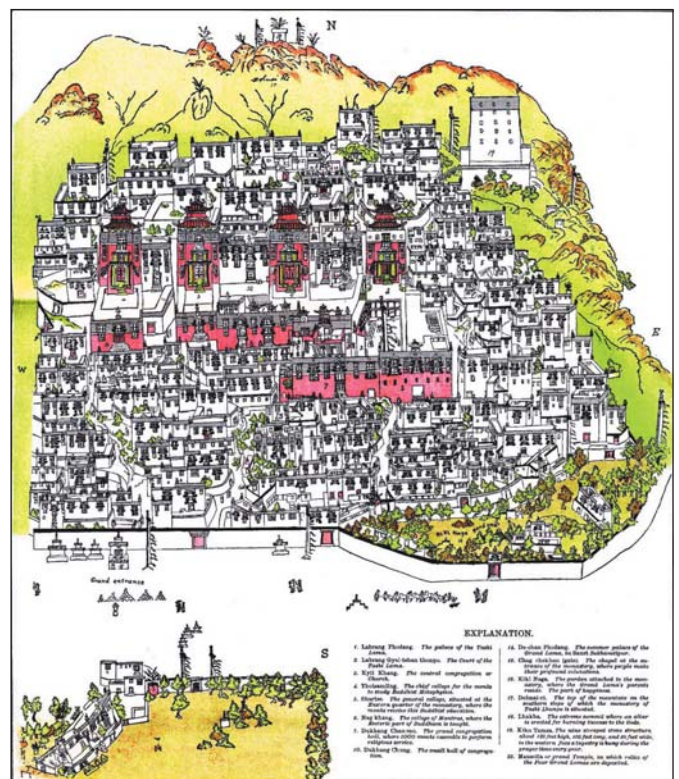


Figure 1.



Figure 2.

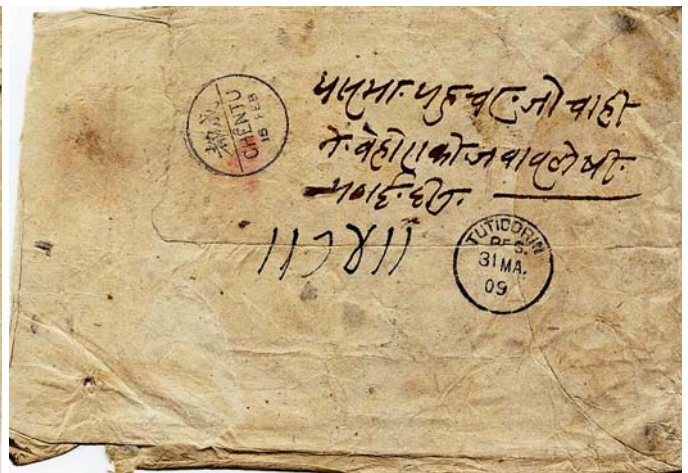


Figure 3.

The cover

The cover (Figures 2 and 3, front and back, respectively) contained a petition in Nepalese script to the King. It is understood that the only monks allowed to communicate with the King were those located at the Golden Summit of Emei Mountain. These monks decided to send a petition to Chandra Rana, as indicated by the address in English, as follows: His Highness The Maharajah, Katmandu, Nepal. As there are usually 20 temples from the Golden Summit, the highest order, to the base of Emei Mountain, the lowest order, this letter was passed down the mountain from temple to temple. At the lowest one, a monk to be accompanied by about four or five fellow monks was selected to take the petition to the nearest post office, which was in Chentu. The monks had to walk the 150 miles to Chentu and back irrespective of the weather. These expeditions were regarded as a way of spreading their faith, and a number of monks from the lowest temple set out together for Chentu. On reaching Chentu they called at the post office, handed over the 20 cents for postage including the registration fee, and the sealed cover was put into the Chinese postal system.

As we can see from the postmark on the back of the cover, it was accepted into the Chinese Postal System on February 15, 1909. During February the weather is very similar to the British climate and to travel the 150 miles on foot to Chentu must have been an arduous task. Clearly the trek back to Emei, in similar weather, was just as difficult.

We can also see on the back of the cover a form of manuscript seal that appears as '117811', which means that any unauthorised person who opens this item of mail will be committing a sin that is equivalent to the slaughter of 25 cows. Because cows were sacred in India and Nepal, anyone caught opening the cover could expect a fate worse than death.

For interested readers, the full address, as written in Nepalese is:

Swasti Shree Maddati Prachanda Bhujdandetyadi Shree Shree Shree Maharaj Major General Sir Chandra Samsar Jung Rana Bahadur G.C.B. G.C.S.I. and D.C.L. Honorary Colonel Fourth Gurkhas Thong Lin Pimma Ko Kang Wang Syan Prime Minister and Marshel Ka Hajurma Bintipatra

It is quite the title for any individual!

On the front of the cover we can see that the stamps were cancelled at Shanghai. It is a considered opinion that the stock of stamps at the Chentu post office had run out and the office was waiting for a fresh supply. But to allow the mail to continue on its course, the unstamped mail was put into a sealed bag (on February 15, 1909) together with a note indicating that no stamps were available. The postage, however, had been paid, and therefore the note requested the clerks at Shanghai to affix and cancel the stamps. It appears as if the Chentu post office applied the red 'SHANGHAI' in an unusual style of lettering handstamp to indicate the post office where the postage stamps were to be applied. Before this cover was put into the closed bag, two Registered handstamps were applied in black together with a manuscript number 248. From Chengtu the mail was put on a boat to travel 160 miles down the Min Jiang to Yibin. At Yibin there was a landing stage that was on the Yangtze River (probably the most western of all stages) and it was here that the mail was transferred to a larger river craft to travel the 180 miles to Chongqing.

The next stage was from Chongqing to Anking, a total of 760 miles, with a final 400 miles being the final stage to Shanghai. Because the Yangtze is a long river, the river craft varied in size as the depth

of water increased. As the mail was transferred to other ships along the route it was joined by other mail, cargo, and passengers. When the mail eventually reached Shanghai, some 31 days later on March 18, 1909, two 10-cent stamps were affixed and duly cancelled as had been requested by the Chentu office. From the appearance of the cover, the inner 10-cent stamp was cancelled by another boxed handstamp reading 'POST OFFICE', which tied it to the other stamp and to the cover. Experts in Chinese markings have not seen this boxed handstamp previously and are currently investigating its origin.

From Shanghai the cover was put onto an ocean-going ship heading westward. This ship would most probably have called at the Treaty Ports between Shanghai and Hong Kong to collect and off-load mail and cargo while refuelling. From Hong Kong, the ship would travel along the Vietnam coastline, across the South China Sea to Singapore, up the Strait of Malacca, across to Sri Lanka (Ceylon), and finally to Tuticorin (India). Tuticorin is an Indian port opposite Sri Lanka where the cover was entered into the Indian postal system. When the cover entered India, it had a registered transit mark, March 31, 1909, affixed. From Tuticorin the cover travelled by train to Calcutta where it was sorted and carried to Raxaul station. Raxaul is the closest point to Nepal for mail, and where a runner would take the mail across the Indian/Nepalese border and deliver it to the post office in Katmandu for delivery to the addressee. Unfortunately there is no receiving mark for Nepal but it is considered to have taken about three days to travel between Tuticorin and Raxaul and a further five days to reach Kathmandu. How long it took to carry it the 150 miles to Chentu from Emei Mountain is unknown, but is thought to be in the neighbourhood of three or four days.

Although the distance from Chentu to Kathmandu, via the old Silk Road, was only 1,300 miles it could

only have been done on foot across the inhospitable Himalayan mountain range. The postal route and distance that the cover travelled (Figure 4) is shown in red while the shortest route across the Himalayan mountains is shown in green:

ROUTE TO SHANGHAI	MILES
From Chentu via Min Jiang to Yibin	160
From Yibin via Yangtse Kiang to Chongqing	180
From Chongqing via Yangtse Kiang to Anking.....	760
From Anking via Yangtse Kiang to Shanghai.....	400
Total	1,500
BY SEA	
From Shanghai to Singapore	2650
From Singapore to Tuticorin	2350
Total	5,000
BY TRAIN	
From Tuticorin to Visakhapatnam.....	850
From Visakhapatnam to Calcutta.....	500
From Calcutta to Raxaul	400
Total	1,750
BY RUNNER	
From Raxaul to Kathmandu	200
TOTAL MILES FROM CHENTU TO KATHMANDU	8,450

Conclusion

What we glean from this cover is a surprising, fascinating and colourful story. Who would have thought that a monk would want to petition the King of Nepal and expect some poor novice to walk 150 miles to post the letter, then walk all the way back during the ravages of February weather. Thus far, it has taken over nine months to research the cover to this stage. Experts are still trying to determine the origin of the previously unseen boxed handstamp. It is these small items that create more understanding of the routes and show us by which offices the cover reached its destination.

It is a pity that it is not known what the petition contained as this would have made an already fascinating story even more complete. There is a great probability that the petition was just one of many that appeared on the Maharajah's desk each morning. Finding which one was sent by the monks of Emei Mountain would be an impossibility after all these years. ☒

Acknowledgements:

This article could not have been written without the invaluable assistance of Colin Hepper and S. L. Shrestha, both of the Nepal and Tibet Philatelic Study Circle, and Major Richard Pratt of the Chinese Philatelic Society of London. The maps are courtesy of The General Libraries, The University of Texas at Austin.



Figure 4.

CHARI



By Richard Logan

Part II of II

To many people around the world **THE GENERAL WAS FRANCE** during the 1940s, 1950s and 1960s

Charles de Gaulle opted out of the public eye in 1955 and 1956 while he wrote his war memoirs at the family home in Colombey-les-Deux-Églises. However, he kept regular contact with his old war and political cronies, who were divided on the question of his return to politics.

In the meantime, the Fourth Republic was not going well. Despite economic prosperity it met military disaster in Indochina in 1954, and then had to face an intractable colonial war in Algeria that began that same year. During the crisis that broke out on May 13, 1958, army leaders and settlers in Algeria staged a mass demonstration directed against any

attempt in Paris to form a government that would make concessions to the Algerian nationalists. Civil war was threatened during the crisis and political leaders of various persuasions turned to de Gaulle as the one person who could prevent disaster. De Gaulle asserted that he was at the disposal of the country. On June 1, 1958, the National Assembly named de Gaulle premier and granted him wide emergency powers for six months, including the right to prepare a new constitution to be submitted to a popular referendum. In September 1958, a new constitution providing for a presidential system was adopted by 79.2% of the electorate.

LES DE GAULLE:

De Gaulle was elected President with 78% of the vote and he was inaugurated in January 1959. De Gaulle and the new government oversaw important financial and economic measures to combat inflation and to protect the industrial expansion already underway. He devalued the franc and issued a new franc worth 100 old francs. Modernization plans and government investment in key areas of the economy were continued and by the 1960s the French economy experienced unprecedented rates of growth and stability.

In international affairs, President de Gaulle asserted France's independence of all outside influence, calling for policies that would make France, and Europe, in fact, independent of the U.S. and the USSR. He refused to admit Britain into his scheme and blocked that country's efforts to join the European Economic Community, now the European Union. France also flexed its muscles in 1960 by successfully exploding its first atom bomb.

The Algerian War continued. De Gaulle, abandoning any hope of reconciliation with Algeria, began to speak of independence. The French settlers and their supporters that had helped bring de Gaulle to power turned against him in open revolt. In February 1960 and in April 1961 he was forced to suppress the two uprisings by the settlers and the military in Algeria. The settlers' OAS terror group resorted to terrorism in Paris and on August 22, 1962, de Gaulle and his wife narrowly escaped an assassination attempt when their car was targeted by machine gun fire.

In March 1962, de Gaulle arranged a ceasefire with the Algerian National Liberation Front and

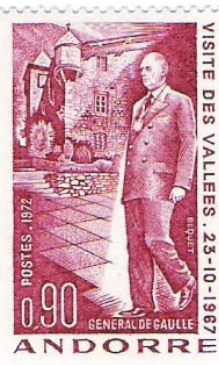
Algerian independence was approved in a referendum in France on July 3rd. De Gaulle had succeeded in ending a crisis that no other political leader in France had been able to do. By the mid 1960s, all other French colonies in Africa had been granted independence.

In September 1962, de Gaulle proposed that the constitution be amended to permit election of the President of the Republic by the people. However, instead of submitting the amendment to the National Assembly first, as the constitution provided, he put it directly to the people in a referendum. When the National Assembly passed a motion of censure, de Gaulle dissolved it and held new elections. The people supported the de Gaulle amendment. The elections in November also resulted in an increased majority for the Gaullists.

On December 21, 1965 de Gaulle was re-elected president for a second seven-year term though only on the second ballot. It was a victory for peace, not for him. His popularity was on the wane.

In February 1966, France withdrew from NATO and continued to oppose Britain's entry into the EEC. In September, in a famous speech in Cambodia, he expressed France's disapproval of the U.S. involvement in Vietnam. In addition, France embarked on a pro-Arab foreign policy. In June 1967, he condemned the Israelis over their occupation of the West Bank and Gaza following the Six Day War. This was a major change in the policy of France towards Israel.

In July 1967, on a visit to Canada, celebrating its Centennial at the time, de Gaulle exclaimed



his famous “Vive le Québec Libre” from the balcony of Montreal’s City Hall on St. Jean Baptiste Day. Criticized by English-speaking Canadians, de Gaulle’s stance was welcomed by a goodly number of the Québécois population then in the process of throwing off 200 years of English supremacy with the “Quiet Revolution.” Prime Minister Lester B. Pearson was outraged by the comment and issued an official rebuke saying, “Canadians do not need to be liberated.” De Gaulle cut short his trip to Canada and returned to France.

In May 1968, the Gaullist regime faced a tough test. Massive student demonstrations and street fighting in Paris ignited a series of huge labour strikes which paralysed the economy. More than eight million workers were on strike, over one third of the nation’s labour force. Students pushed for reform of France’s educational system, expansion of their educational facilities and a say in decision-making. The workers were demanding a more equitable share in the economy that had been growing dramatically since the 1950s but was suffering from massive inflation.

De Gaulle first planned a series of reforms to pacify the students and labour, asking for backing in a referendum. However, Premier George Pompidou advised against the referendum and persuaded President de Gaulle to dissolve the government and hold new general elections instead.

In the June 1968 elections, de Gaulle effectively used the threat of a Communist takeover and the support of many French people, who were terrified by the student demonstrations, to win a landslide victory. His party won 358 of the 487 seats. It was the first time in the history of the Republic that any party had won an absolute majority in the legislature.



The main thrust of the Gaullist regime now was the building of a “society of participation,” distinct from capitalism and Communism. This “society” was pledged to give labour and students a share in the decision-making process that affected their lives and to assure the blue-collar worker a share in the profits of industry.

In 1969, Charles de Gaulle proposed constitutional reforms which would have transformed the Senate into an “advisory board” and given extended powers to Regional Councils. There are those who say that this was a self-conscious act of political suicide by de Gaulle. When the proposals were defeated, de Gaulle resigned the Presidency and retired to his home on Colombey-les-Deux Églises. There he worked on his war memoirs until his death of a heart attack on November 9, 1970. Few modern men have played a more dominant role in the history of their country.

He once said, “A man of character finds a special attractiveness in difficulty, since it is only by coming to grips with difficulty that he can realize his potentialities.” ☒

New Beavers

H. P. Jacobi and Robert K. Lane were inducted into the Order of the Beaver at the annual convention of the British North America Philatelic Society held in Calgary, Alberta. The Order of the Beaver is an honorary fellowship of the Society consisting of members who have distinguished themselves by service to the organization and to philately.

Pete Jacobi is from British Columbia and has served as the Society’s Secretary since 2000. He collects postal history related to the mining and smelting industry in British Columbia

Bob Lane resides in Alberta and has been the Society’s Webmaster since 1995 and also serves as a Vice-President. Bob collects Manitoba Postal History with special emphasis on the RPOs of that province.

The Order of the Beaver also presented Lifetime Achievement Awards to Gray Scrimgeour and Bill Topping, both from British Columbia. Both individuals have set high standards in exhibiting, researching and have published numerous books and articles on various philatelic subjects. Topping is a past president of the Canadian Philatelic Society of Great Britain.



Looking for USA?



Our regular sales are a great source of singles, sets, covers, errors, varieties, plate blocks, collections, and stocks.

Contact us today for your FREE colour catalogue or view it online at

www.vanceauctions.com

VANCE AUCTIONS LTD.

P.O. Box 267P, Smithville, Ontario, Canada L0R 2A0

Toll Free Phone: 1-877-957-3364

Fax: 905-957-0100



mail@vanceauctions.com



JEFF MELSKI

129 Martinglen Crescent, Kitchener, Ontario N2E 2A3

Email: jmelski@sympatico.ca

CANADIAN APPROVALS

A smaller dealer with a personal approach!

NEED TO UPGRADE OR EXPAND YOUR COLLECTION?

ALL DIFF. CANADA STAMP PACKETS OF 100 EACH.

VF NH SINGLES, PAIRS, BLOCKS, & S/S's AS ISSUED

ALL COMMEMORATIVE ISSUES, NO DEFINITIVES

NO GST OR PST OR SHIPPING CHARGES

1973-1979	Cat. value \$59.70	Net \$35.00
1980-1984	Cat. value \$64.65	Net \$38.00
1985-1988	Cat. value \$117.00	Net \$69.00
1999-2001	Cat. value \$126.40	Net \$74.00
2002-2003	Cat. value \$211.75	Net \$119.00
2004-2005	Cat. value \$126.25	Net \$74.00

2008 UNITRADE CANADA CATALOGUE...\$42.50 NET
WANT LISTS WELCOME - WILL QUOTE ON SUPPLIES

SAVE SOME CASH, JUST ASK!!

SEE US AT STAMP SHOWS ACROSS CANADA & THE U.S.

- FOR -

- Classic Canada through Admirals
- Superb Large and Small Queens and Jubilees
- Greene Foundation Certificates
- Semi-Official Airmails
 - World's deepest stock of stamps, covers and specialty items
- Canadian Revenues - Newfoundland

ASDA
APS

MARK-LANE STAMPS

CSDA
RPSC



P.O. Box 626 West Haverstraw, NY 10993
Tel/Fax (845) 362-5330 E-mail RWS45@aol.com

Want Lists Filled

"Fair Dealing Since 1943"

Canada REVENUES Semi Official Air Mail

stamps & covers



Duck, Hunting & Wildlife Conservation stamps & licenses

Huge stock. Price lists on request.

See our huge websites. *Established since 1970*

www.esjvandam.com
www.canadarevenuestamps.com

We buy & sell all of the above

E.S.J. van Dam Ltd

P.O. Box 300cp, Bridgenorth Ont., Canada K0L 1H0

Tel: (705) 292-7013 Toll Free: 1-866-EVANDAM

E-mail: esvandam@esjvandam.com

member: ara, aps, csda, asda, bnaps, rpsc

Polish White Cross for the Polish Army in France

By JJ Danielski

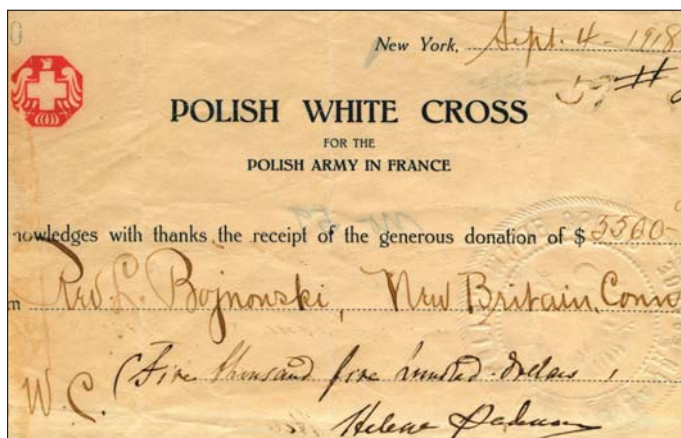
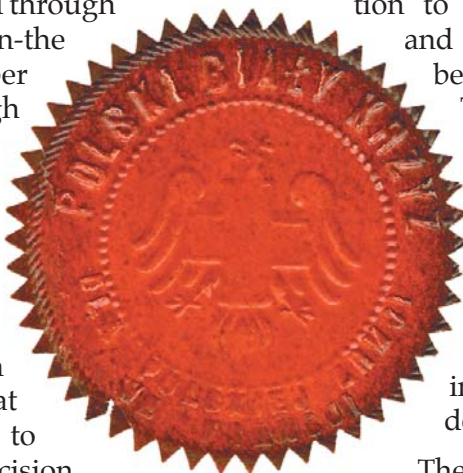
With U.S. authorities allowing the recruitment of volunteers into the Polish army and their training in Canada led to a need for an organization that would provide care for these soldiers. There were over 22,000 volunteers who passed through the military camp in Niagara-on-the-Lake, Ontario, between September 1917 and March 1919. Although funding for the recruitment was provided by the Government of France, it only covered the basic needs.

Red Cross type organization seemed to be a natural choice but a Red Cross may only exist in an independent country. Since, at that time, the Poles could only aspire to regain their independence, a decision was made in January 1918 to create an organization similar in functions to the Red Cross but under a different name. Ignace Paderewski came out with the idea of a White Cross for the name of this new organization. Polish women's organizations opted for honouring Paderewski's wife and immediately renamed the local branches of their organizations as the "H. Paderewska's Relief Committee for the Polish Army".

On February 2, 1918, a founding meeting called into being an organization under the name Polish White Cross for the Polish Army in France. A special branch was created within this organization to oversee the women's movement and coordinate their activities for the benefit of the Polish volunteers. The White Cross superimposed over the stylized White Eagle was accepted as its emblem and Madame Paderewska was elected the organization's president. Delegates from the participating organizations formed the board of directors and appointed a governing council that along with the president had executive powers.

The Polish White Cross (PWC) had seven branches: 1) Collection of Offerings, 2) Soldiers' Welfare (collection of under clothing for soldiers), 3) First Aid Supplies, 4) H. Paderewska Women's Associations, 5) Purchasing Branch, 6) Shipping Branch, and 7) Nursing Branch (training of nurses for the army).

PWC posts were planned to open in all locations in the USA and Canada that had Polish populations. The idea of charity for the Polish Army and

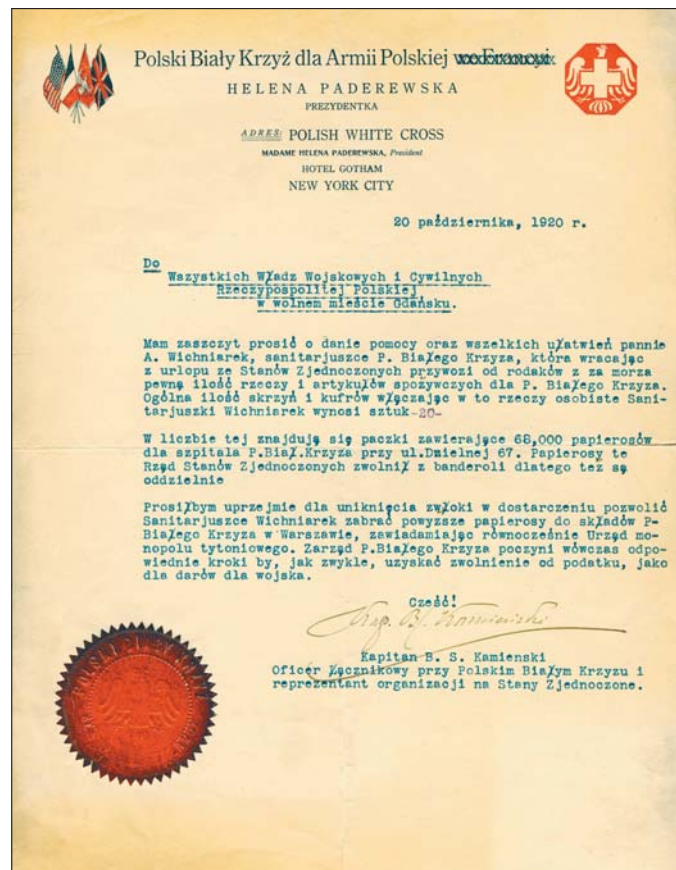


for the starving population in the old country gained overwhelming support among the Polish clergy. Consequently, in numerous cases the PWC posts were organized in Polish parishes and usually affiliated with local Polish women's organizations.

It was considered a patriotic duty for Polish girls turning 15 years of age to join the PWC. They did not have to pay any dues but were expected to do fundraising for the organization, actively participate in any PWC gathering, prepare gifts for soldiers and bring at least one family member who could pay annual dues into the organization.

There were two kinds of memberships: patronage with annual dues of \$5 for which a member received a gold pin from the organization and active membership with \$1 annual dues and an enamel pin.

In November 1918, Paderewskis left the USA for Poland which had a negative impact on the fate of the Polish White Cross. On the grounds that they violated the competence of the American Red Cross, American authorities introduced several restrictions on the activities of the PWC. In January 1919, the Polish White Cross was forced into receivership. Closing down of the recruitment centers in February 1919 necessitated immediate closing of the PWC offices. The organization's head office



was moved from New York City to Chicago and the entire organizational structure was successively incorporated into the Polish National Department.

The relocation of the Polish Army to France caused the organization's re-establishment on March 1, 1918 in that country in association with the Comité de Secours pour les blessés polonais (CSBP) in Paris. The president of CSBP Count Nicolas Potocki was appointed as Honorary President of the Polish White Cross in France. On June 1, 1919, the existence of the PWC in France was terminated due to the transfer of the army to Poland to fight the invading Red Army.

In January 1919, the PWC was established in Poland by Madame Paderewska under the name "Polish White Cross: A Union of Associations for the Benefit of Polish Servicemen and Victims of War" after WWI played a pivotal role in the fight against illiteracy in the army and in the preparation of the enlisted people to post-military life.

Statistics show that between August 16, 1918, and January 31, 1919, the Polish White Cross collected over \$27,500. Additionally, almost \$20,500 was collected between February and September 30, 1919, by the branch of the Polish National Department in Chicago which continued fundraising in place

of the liquidated PWC. This branch is known as the Women's Relief Organization (in Polish "Sekcja Ratunkowa Kobiet"). The PWC receipts and letterheads shown here prove that they continued to be used by the representatives and successors after the formal liquidation of the PWC.

The donation receipts and letterheads with the organization's seal are the only documents known to me that record the existence of this organization in the USA. To date I have not seen a single item which would document the existence of the PWC in France.

Illustrative material presented

Competitive exhibiting requires rules that will determine what kind of material may be shown and which of the aspects should be explored. For those who consider entering a competition it is imperative to get acquainted with the existing regulations before starting to prepare exhibits. This may result in savings of time and money.

As readers might have noticed, the illustrations in this series consisted of material that is non-philatelic in the traditional sense of the word. It was intentional. I decided not to use any contemporarily issued/produced material (stamps, FDCs, postmarks, post-stationery etc) to commemorate events or individuals from the past. The years of observations convinced me that mixing historical documentary items with philatelic material generated years after, to commemorate those past events or individuals, usually does not produce satisfactory results.

Here, I would like to help those who are thinking of exhibiting by referring them to sources that should give them some kind of direction concerning the various items and their treatment. The basic source continues to be the *Manual of Philatelic Judging* issued by the American Philatelic Society currently in its 5th edition (2002), referred to below as the MANUAL.

Fundraising labels, organizational seals, labels, etc. if shown as a separate category, belong in the so-called Cinderella Division in the General Class. The other sub-divisions within this category are Charity, Promotion and Poster. See: MANUAL.

Picture postcards, if treated as a separate category, has recently been approved by the APS Board of Directors as a competitive class for the World Philatelic Series exhibitions. The MANUAL does not cover this class as yet. The best source to consult is the American Association of Philatelic Exhibitors website <http://www.aape.org/ppcs.asp>.

Corner cards, corner card covers and patriotic covers, if shown separately, belong to the Illustrated Mail Division within the General Class, along with advertising covers, cacheted covers, cacheted FDCs and Maximaphily – see MANUAL. At the international level, Maximaphily constitutes a separate class with FIP regulations.

Donation cheques and receipts for charity contributions do not belong in any specific division on the national or international scene and may be displayed as non-philatelic collateral material within the Display Division. See MANUAL.

Receipts for donations in the form of thank you letters may find their way to special studies included in FIP Postal History Class. See below.

There are two options for those who intend to mix philatelic and non-philatelic items at the national level: Special Studies or Display class. Prospective exhibitors should be aware that there are differences between the MANUAL and international (FIP) regulations regarding those two areas of exhibiting.

The MANUAL lists Special Studies as a separate category within Postal Division in the General Class. Special studies are inter-disciplinary in nature and may utilize material from the following divisions: Postal, Revenue, Illustrated Mail and/or Cinderella

Display (also called Open Class) exhibits in the MANUAL constitute a separate division. Display exhibits "may combine philatelic elements with all sorts of non-philatelic elements" that do not belong in the Postal, Revenue, Illustrated Mail and/or Cinderella divisions.

In international exhibiting the situation is different. The Illustrated Mail (with the exception of Maximaphily) and Cinderellas are not recognized as legitimate items for exhibiting. Furthermore, on October 13, 2006, the 69th FIP Congress approved the Postal History Commission's recommendation to include the so-called Historical, Social and Special Studies as an experimental sub-class of the Postal History Class. Thus the possibility may exist within this sub-class to include those non-philatelic (according to FIP standards) items that have an intimate connection with the operation and/or the objectives of the postal system. Since there is no approval for the final structure of this sub-class, and to avoid any misunderstanding, I prefer not to comment on this subject any further. ☒

150 YEARS OF STAMPS

I. Introduction

To celebrate the 150th anniversary of its stamps in 2005, Finland Post issued two stamps in miniature sheet format featuring a masterpiece of the fabled house of Fabergé. The stamps depict the Fabergé egg made of white topaz, platinum and thousands of diamonds. This Easter egg has been described as the most beautiful jewellery object in the world. To thrill philatelists even further, the post office issued a limited numbered edition of only 2,500 of this miniature sheet.

The following article reviews the stamps issued by Finland in 2005. The text emphasizes the qualitative description inherent in the stamp along with some technical data.

II. Finland Post's Program For 2005

In 2005, Finland Post issued stamps ranging from historical anniversaries to gastronomy, and from horses and churches to golf.

With Friendship Toys: Finnish Post began 2005 with the issue of a With Friendship stamp for Valentine's Day on January 14, 2005. The four 1st class stamps depict drawings of soft animal and wooden toys in a fairy tale style by Tita Rossi. "A warm orange lion cub and a striped tiger cub squat side by side on one stamp; a toy elephant and a lop-eared dog huddle together on another.



Colourful, nostalgic wooden toys are in a merry heap on the third stamp. On the fourth a teddy bear nurses a bunny that has lost a leg." The toys bring childhood games and caring for friends and stir up memories of childhood days.

Oulu 400 years: On January 14, 2005, the Finnish Post released two stamps commemorating Oulu, the 400-year-old city and the largest in Northern



Finland. The city was founded by King Charles IX of Sweden in 1605 on the shore of the Gulf of Bothnia at the site of an ancient trading post at the outlet of the Oulu river. Oulu was made prosperous by tar and salmon and is today an attractive Centre of Excellence noted for its high-tech industries. The stamps by Raimo Ahonen depict a child playing on a beach and a woman on a bike. The two stamps are linked by a silvery tone.

Lahti 100 years: The city of Lahti was also the subject of two stamps released by Finland. The designer Päivi Vainionpää brings the exciting, dark toned pictures of the city to life, showing illuminated radio masts on one stamp and Sibellius Concert, the pride of Lahti, on the other. Lahti is celebrating its 100th anniversary and has hosted a number of national events such as the Nordic World Ski Championships and the national stamp exhibition Lapoex 2005. Lahti has been the subject of stamp releases in 1955, 1986 and 1994.



Rotary International Centennial: Finland Post also issued a stamp to celebrate the centennial of Rotary International. Pekka Piipo the artist has successfully captured the blue-based international rotary organization by depicting the organisation's insignia, golden cogwheels. The organisation began as a debating society 100 years ago and is today the world's biggest apolitical and humanitarian organisation with ideals of service and peace advocacy.

Today, it can proudly look to the fact that it has 1.2 million Rotarians in the world from 31,000 clubs in 166 countries. It can take pride in boasting of facts such as collecting more than \$600 million with their Polio Plus campaign.



a national masterpiece that was completed in 1901-1903 in a unique, natural environment. The 1st class stamps depict a wintry scene of the main buildings exterior and an interior picture of the dining hall, with the Hvitträsk ryijy wall rug showing the life and family members of the house in the foreground plus a stained glass window.

Hvitträsk: Industrial Art: In conjunction with the above three stamps, three other stamps issued on the same day illustrate the theme of industrial art. The pictures for the 2nd class stamps depict Hvitträsk wonderful details of a door decoration, a copper hatch from a tiled heating stove in the nursery and a detail from a chair in Eliel and Loja Saarinen's bedroom.



Almanac in Finnish 300 years: To honour the publication of its first Almanac published 300 ago Finland Post issued a stamp on January 14, 2005. The designer of the stamp Kaisu Klemetti depicts a waxing moon on the stamp. The darkened part of it shines with reflected earthlight.

The picture is enriched with the Pleiades star cluster. The almanac is still one of Finland's most popular calendars. It is also the longest running Finnish publication, having been published in more or less the same format over the centuries. The publisher of the first Finnish-language almanac was the Turku Academy and professor of Mathematics Laurentius Tammelin.

Easter Witch: On March 2, 2005, Finland Post surprised philatelists by issuing a stamp depicting a Witch for Easter. The witch is depicted as a merry witch with colourful Easter twigs. If one visualizes witches as evil-dressed figures with a broomstick or flying on a broomstick this stamp should change their opinion.



Virpi Pekkala, the artist, successfully captures decades-long traditions of good luck in a charming way with a stamp that is partly cut-to-shape.

Hvitträsk: Architecture: Hvitträsk, designed by famed Finnish architects Herman Gesellius, Eliel Saarinen and Armas Lindgren as their home and studio, is the subject of the 1st and 2nd class coil stamps issued by Finland Post on March 2. Hvitträsk is a national romantic building in the Art Nouveau style in Kirk-konummi near Helsinki. It is



Apple blossom: On March 2, 2005, Finland Post released a stamp depicting the apple blossom. Leena Airikkala, the designer, superbly captures the delicately atmospheric Apple blossom in colours of light pink and white against a green background. The picture of the Apple blossom on the stamp is as fresh as a summer garden and is perfect for all kinds of messages from personal letters to invitations.



Finnish World War II Veterans: On March 2, 2005, a stamp initiated by four associations of veterans was issued. Its subject was the 105-day winter war. The picture of the stamp, designed by Timo Berry, shows a photo of a wounded soldier and a Lotta (a member of the woman's auxiliary services) nursing him. It is a rare picture of a woman close to the front line. On the lower edge of the stamp are the insignias of the four veterans' organisations which proposed the stamp issue.



Europa: Gastronomy: To tantalize the taste buds of gourmet lovers, Finland Post issued two stamps depicting Lapland's exotic delicacies as part of the EUROPA series on May 11, 2005. The two stamps by Asser Jaaro depict sautéed reindeer and grouse breast, whitefish-beerroot tartare, pancakes





and Arctic cloudberr-
ries that make it look
appetizing to eat.
These gourmet dishes
were conjured up by
international award-
winning travel busi-
nessperson Päivikki Palosaari and bring a magi-
cal sense of Finnish Lapland on the Gastronomy
stamps.

Ponies: In response to the growing popular-
ity of riding as a hobby, Finland Post on May 11,
2005 issued a booklet containing four stamps on
horses. The stamps spotlight the special features of
four breeds: the sociability of the Icelandic horse,
the intelligence of the Welsh mountain pony,
the solid build of the New Forest pony and the
liveliness of the Shetland pony.



World Championships in Athletics: Finland Post
issued a stamp on May 11, 2005, to honour the World
Championships held in Helsinki. This was the sec-
ond time that Championships were held there. The
first time was in 1983. The stamp depicts three run-
ners in a photo finish, symbolizing the will to win.
The designer, Pekka Piippo, certainly has succeeded
in capturing the effort of the runners. Hundreds



of thousand of athletic fans
turned up at the Helsinki
Olympic Stadium and a bil-
lion people or more followed
the games on television.

Golf: On
May 11, 2005,
Finland Post
issued a minia-
ture sheet with
four stamps
depicting adults
of various ages
in addition to children polishing their skills on the
green. Golf was undoubtedly chosen as the sport
to be depicted as it is attracting more and more
younger enthusiasts together with children being
sponsored by clubs. The sheet goes beyond just
showing golfers, it shows the Finnish forest and a



fresh autumnal blue-white sky. In addition, it shows
golfing equipment such as the putter and high-tech
gear.

Buses in Finland 100 years:

To commemorate a century
of buses in Finland, its Postal
authorities decided to release
a stamp as part of the nostal-
gia on bus travel. Finland's
first bus made by Scheibler arrived by ship in Turku
in December 1905. On the stamp, a bus belonging
to Lauttakylän Auto Oy in the late 1940s and early
'50s is shown against a backdrop of farmland. The
stamp conjures up a sense of the days when village
wives sat in the front of the bus and the men folk
gathered at the back.



Berries: Cloudberry: The golden fruit of the north
is featured on a stamp by the Finnish Post. The
fruit is the Cloudberry or *rubus chamaemorus*. The
stamp depicts this berry preserved in a traditional
glass jar. This berry is considered a veritable pow-
erhouse of vitamins: it contains 10 times as much
vitamin C and four times as much vitamin A as an
orange. Besides the vitamins, this berry is used to
ward off scurvy. Besides its attractive colour, sea-
men were forced to carry the berry on long voyages
and Lapps have been known to store the berry in
snow to be eaten with reindeer milk.

Icebreakers: In honour
of Finland's Arctic know-
how in icebreaker ships,
Finland Post has issued a
set of four stamps on ice-
breakers. This is not sur-
prising as its long winters
have made this country a
technological trailblazer in
the making of heavyweight
vessels. The stamps depict
four generations of icebreak-
ers: the *Urho*, the *Otso*, the
Fennica and the *Botnica*. The
first was built in 1975 and
can clear a path through ice
up to 20 metres thick. The
icebreakers based on photo-
graphs of scale models are
shown against a background
of different times of the
day and night.



Petäjaveski church: Four stamps in a miniature
sheet depicting the Petäjaveski church were released
on September 7, 2005 by Finland Post. Petäjavesi

church represents Nordic Lutheran wooden architecture and a long tradition of timber building. This church in the Centre of Finland was erected by 12 carpenters in 1763-1765. It has been included in the UNESCO World Heritage List. Two stamps depict the outside of the church and the other two stamps depict drawings of the view of the church from the interior: an angel blowing a trumpet and a chandelier hanging from the central dome.



Finnish Postage stamp 150 years: To mark the 150th anniversary of stamps in Finland, Finland Post issued two stamps featuring a masterpiece of the fabled house of Fabergé. The Fabergé egg is made of white topaz, platinum and thousands of diamonds. This Easter egg has been described as the most beautiful jewellery object in the world. It was commissioned in 1913 by Tsar Nicholas II as a gift for his mother. In 2002, it realized \$9.6 million dollars at Christie’s auction. The exquisitely printed stamps depict the bouquet of flowers in the egg on one stamp and a partial view of the outside of the egg on the other.



Christmas: Two Christmas stamps designed by one of the all-time best-known Finnish children’s writers, Mauri Kunnas, were released by Finland Post on October 28, 2005. The designer has succeeded in capturing the merriment of Santa Claus danc-



ing with Mrs. Christmas in her Finnish national dress on one stamp and Santa Claus reading wish-list letters on the other brightly coloured stamp.



III. Other Stamps and Products

Zeus: On April 6, 2005, Finnish Post issued new frames for personalized stamps. The 1st class stamp shows an illustration of schnauzer called Zeus. The sheet of 20 was designed by Ari Lakaniemi and Susanna Rumpu. It was printed by Cartor Security Printing, France with safety perforation. The size of the stamp is 35x41mm. Customers can produce a personalized stamp with almost any picture.

Contemporary art: Finland Post issued new personalized stamp frames on September 7, 2005. The illustration on the E.90 stamp is a piece by sculptor/doctor honoris causa Kari Huhtamo entitled *Fruits 1*. The designer of the stamp is Pekka Piippo. It was printed by Cartor Security Printing, France with safety perforation. The size of the stamp is 35x41mm.

Other Products: In addition to the stamps, Finland Post is also well known for the numerous postcards, yearbooks and other philatelic products.

IV. Concluding Remarks

Finland Post over its 150 years of issuing stamps has released a number of interesting philatelic products. It was one of the first countries to release several stamps with holograms not only in pane format but also in booklet format and a hologram on postcards. For Valentine’s Day, it usually issues stamps featuring interesting designs and stories such as stamps with scratch of surfaces, and so on. Some of the designs on its stamps are exquisite with intricate patterns. It recently also began issuing limited number of first day covers with the signature of the designer of the stamp on the cover. It issues numerous postcards every year with catchy designs and messages on the folklore of that country that have particular meaning for its natives. For those individuals who are interested in viewing or obtaining more information on stamps from Finland they can do this via the Internet at the following address: www.posti.fi/stamps or by sending an e-mail to stamps@posti.fi ☐

Santa Letter-writing Program a RECORD AFFAIR

By Tony Shaman

Canada Post's Santa Letter-Writing Program has made it into the Guinness World Records book. The 1.06 million letters and 44,166 e-mails sent to Santa in 2006 earned the Crown corporation a Guinness World Record certificate for the most letters that the jolly old elf received at his North Pole H0H 0H0 address.

On hand for the November 9, 2007 Santa letter launch was Robert Waite, Senior Vice-president, Stakeholder Relations and Brand for Canada Post. "I am happy to see the children preparing their letters for Santa," said Waite in his remarks to the gathering. Waite accepted the Guinness certificate on behalf of Canada Post from Samantha Fay, Guinness Senior Vice-president, London.

Grade 1 students from St. Monica's Elementary School, Toronto squealed delightedly at the sight of Santa as he made his way into Postal Station K in midtown Toronto for Canada Post's 26th National Santa Letter-Writing launch. Canada Post sponsors the popular letter-writing program as part of its literacy initiative to teach youngsters the art of letter-writing and the correct way of addressing envelopes.



Media photographers lined up to snap Santa's picture as he arrived at Toronto's Postal Station K for the 26th National Santa Letter-Writing launch.



Samantha Fay, Senior Vice-president, Guinness World Records, London, looks on as Santa peruses the certificate documenting the official record of Santa letters and e-mails responded to by Canada Post volunteers in 11 languages.



Albert Lee, Manager Corporate Communications Central Area (right) introducing Robert Waite, Senior Vice-president, Stakeholder Relations and Brand, Canada Post. Waite accepted a certificate on behalf of Canada Post from Guinness World Records for the record number of letters in 2006 sent to Santa's H0H 0H0 postal code.

Santa told the youngsters that he looked forward to reading their letters and promised that he would send a reply from his home at the North Pole.

Canada Post introduced the letter-writing program on a national basis in 1982 and since that time its employees and retirees have responded to more than 15 million letters from children from across Canada and from many other parts of the world. And if the past 25 years are any indication 2007 will be another record year for what has become another Canadian Christmas tradition. ☒

Transcribing Sounds

by Michael Madesker, RDP, FRPSC

BRaille ALPHABET: Postal Services to the Blind

China, along with most countries of the world, use the stylized figure of a person with a white cane to indicate a service to the sightless. Excavations of the ruins of Pompeii in 1748, a town destroyed by an eruption of Mount Vesuvius in 79 CE, yielded a fresco of a blind man being led by a boy, each holding the end of a staff. A 1st CE ceramic mold found at Herculaneum, destroyed by the same eruption as Pompeii, shows a blind boy with a staff and a dog at his right leg as in the illustration, shown at right.

The presence of the dog in this sculpture puts in doubt the many accounts that it is a modern concept. In fact, there are many recorded stories from antiquity, including the Bible, about training animals to aid people, whether it was oxen to plow fields, elephants to fight wars, or geese to safeguard towns. The current training methods of seeing-eye dogs are credited to an 18th-century physiologist, Dr. Joseph Reisinger of Vienna.

Postal fees in China are waived on first class mail and parcel post destined to or originating from a blind person or an institution serving the sightless. Payment of all other fees is obligatory. The value of postage, on the first class letter shown was waived, however, 3 yuan was collected for registration. The fee payment waiver is indicated by the rubber stamp inscribed *cecogramme*, in Chinese and Latin characters. The adhesive label with the universal symbol of the blind and the sealed cover on it, indicative of the postal service to the blind, was attached just above the rubber stamp.



Photo courtesy of Col. Wm. G. Robinson, FRPSC, OTB of Vancouver.



Cover courtest of Mr. Liu Guangshi, a journalist, and Mrs. Huong Liao Li, a school teacher, a husband and wife team of collectors from Shanghai.

Bavaria "Lion" Official Stamp

The 1916 Bavarian official stamps featured a pair of lions supporting a heraldic shield. The issue had 10 denominations and four paper varieties. Six of the denomination/paper combinations had a total of 14 catalogue numbers for colour differences. And the printing varieties...!

The 20 pf stamp has two varieties. On one, the rear foot of the lion at the left of the stamp touches the left frame line. The variety is marked on the two-stamp image and a detail is shown separately. Postally used, the incremental value of the variety is about 20-25 Euros, while 0.5 Euros is the lowest catalogue value of a 20 pf.

The second variety on the 20 pf stamp is a very long tongue on the lion at the right of the stamp. The tongue extends well into the opening formed by a loop in the lion's tail and is thicker at the end than on the usual stamp. The location is marked on the two-stamp image and the detail is shown separately. Compare the extended foot and normal foot on the two images, and check the tongue length on the two images to see the differences. On the two lower value paper/colour combinations, the incremental value of the postally used variety is about the same: 20-25 Euros as for the "broad left foot" variety.

Finally, the 25 pf stamp has a variety on which the top of the right "5" ends in a distinctly concave bar. The white circle on the image of the full stamp shows the location to check, and the enlargement shows the shape of the cross-bar at the end. The normal postally used stamp is 0.6 Euros on its most common paper and 12 Euros for the variety.

The same three variations recur on the 1919 issue of these stamps overprinted "Volksstaat Bayern." All three varieties



add 13.2 Euros to the 1.8 Euro base value on the overprinted stamps.

"Values:" dividing the variety value by the value of the ordinary stamp will create a multiple the reader can apply to prices from any other catalog. For example, if the ordinary stamp has a used price of 100 Euros, and the variety has a used price of 350 Euros, multiplying a *Scott*TM price for the used stamp by 3.5 will give an approximate value for the variety.

As usual, colour images are available to those who e-mail me with requests (napoleon@voyager.net).

Smithsonian Libraries will continue offering Saturday hours at the National Postal Museum.

Beginning Saturday, Nov. 17, the NPM Library is now open from 10 a.m. to 4 p.m. on the third Saturday of each month.

The new Saturday hours are part of a pilot program, which is currently funded through June, 2008. A decision regarding whether to continue offering Saturday hours after the pilot program

ends will depend heavily on demand, will be measured by actual Saturday visits to the Library, and the availability of funds.

For additional information, contact NPM Librarian Paul McCutcheon at 202.633.5544 or mcutcheonp@si.edu.

This column reports the results of philatelic and literature awards in national-calibre exhibitions in Canada and the awards won by RPSC members, Canadian owned exhibits and exhibits of Canadian material in international exhibitions.

Cette chronique liste les résultats obtenus dans les expositions philatéliques et de littérature nationale et les expositions quasi-nationales d'intérêt aux lecteurs ainsi que les résultats obtenus par les Canadiens, les membres du SRPC et les collections de matériel canadien dans les expositions internationales.

By J.J. Danielski

ROYAL*2007*ROYALE, TORONTO, ON • OCTOBER 12 - 14 OCTOBRE, 2007

Judging panel: Doug Lingard (Chair/President), Paul Barsdell (Australia), Sam Chiu, Tom Fortunato (USA), John McEntyre, Rodney Page. Apprentice/Aprenti: John Wilson.

COURT OF HONOUR

D. Lingard - *The Royal Train*
D. Irwin - *Niagara Falls Postal History*
D. Irwin - *The Centennials*
F. Fawn - *Large Queens*

GRAND AWARD

J.L. Robertson - *Stampless Cross-Border Mail between United States & Canada*

RESERVE GRAND AWARD

R. Brigham - *The Dominion of Canada: Edward VII 1903-1911*

A YOUTH GRAND AWARD and AAPE Youth Award

A. O'Reilly - *Here Come the Pigs*

PHSC Best BNA Postal History Exhibit

K. O'Reilly - *Postal History of Labrador before Confederation*

APE Philatelic Exhibiting Creativity Award

P.J. McCarthy - *"All Aboard"*

AAPE Pins

V. Potter - *Egypt: Sphinx & Pyramid Issues 1867-1915*
H. Janssen - *Finding Frogs*

APS Award of Excellence, pre-1900

D.M. Smith - *Transatlantic Stampless Mails to and from the Maritimes 1757 - 1859*

APS Award of Excellence, 1900 - 1940

Ed Kroft - *Rishon Le Zion (Palestine): From Settlement through Statehood*

APS Award of Excellence, 1940 - 1980

M. Heifetz - *AV2 and O.A.T. Markings*

APS Award of Excellence, post 1980

L-L Tillard - *La Marianne surchargée Saint-Pierre et Miquelon*

APS Research Award

R.M. Morris - *The Admiral Issue of Canada*

American Airmail Society Ribbon & Medal

- N.H. Hunter - *Evolution of Air Mail - Toronto, Canada*

American Topical Association Awards:

1st N. Nielson - *From Coffee to Commerce: The Story of Lloyds*
2nd D. Trathen - *Evolution of Horse Breeds*
3rd M. Mujiullah - *"Railways"*

American Topical Association One Frame Merit Award

F. Alusio - *Giovanni Caboto and His Discovery of Canada*

American Topical Association Youth Award

C. Leclerc - *Les Canadiens Célèbres*

BNAPS Award for best BNA exhibit

H. McNaught - *Canada - 1897 Diamond Jubilees*

Philatelic Specialists Society Award of Merit

J-J Tillard - *Les émissions de Saint-Pierre et Miquelon au 19ème siècle*

GTAPA Challenge Award

North Toronto Stamp Club
Bramalea Stamp Club
West Toronto Stamp Club

One Page - Single Frame

- North Toronto Stamp Club
- West Toronto Stamp Club
- Middlesex Stamp Club

Gold / Or

- R. Brigham - *Canada - The Twelve Penny Black*
- H. McNaught - *Canada: The Half-Cent Small Queen Issue of 1882-1897*
- S. So - *Prisoner of War Franks*
- S. Johnson - *Yukon Airways & Exploration Company Limited*
- G. Vadeboncoeur - *Canada: The Small Queens of 1870-1897*
- D.M. Smith - *Transatlantic Stampless Mails to and from the Maritimes 1757 - 1859*
- N.H. Hunter - *Evolution of Air Mail - Toronto, Canada*
- G. Locke - *The Penny Black Plates*
- J. Sheffield - *Two Ring Numeral Cancels*
- N. Nielson - *From Coffee to Commerce: The Story of Lloyds.*
- Ed Kroft - *Rishon Le Zion (Palestine): From Settlement through Statehood*
- J-J Tillard - *Les émissions de Saint-Pierre et Miquelon au 19ème siècle*
- J.L. Robertson - *Stampless Cross-Border Mail between United States & Canada*
- H. McNaught - *Canada - 1897 Diamond Jubilees*
- R. Brigham - *The Dominion of Canada: Edward VII 1903-1911*
- M. Heifetz - *AV2 and O.A.T. Markings*
- R.M. Morris - *The Admiral Issue of Canada*
- K. O'Reilly - *Postal History of Labrador before Confederation*

Vermeil

- W. Schultz - *Liberty & The Empire - 1799-1815 - 17 cent Postal Rate*
- G. Portch - *Canada: The Half-cent Small Queen*
- A.J. Hurst - *Postal History of Northumberland, England: the Early Years*
- J. Brookes - *Mediterranean Mouflon*
- F. Alusio - *Giovanni Caboto and His Discovery of Canada*
- J. Hodgson - *The Sowers Stamps of Poland*
- Jane Sodero - *Guysborough Nova Scotia Post Office 1838-1937*
- S. Reddington - *Canada: Three Cent Small Queen*
- R. Blackburn - *Early Post Offices on the Huron Road*
- M. Madesker - *Prisoners of War - W.W. I*
- J.P. Longfield - *British North Borneo - 1883-1941*
- O. Osborne - *Zemstvo - The Russian Rural Post*
- R. Gurevitch - *Haiti: 1915-1920 'Provisional' Issues*
- I. Kecsed - *Hungarian Stamp Issues 1871-1900, Including Postal Stationery*
- D. Trathen - *Evolution of Horse Breeds*
- V. Potter - *Egypt: Sphinx & Pyramid Issues 1867-1915*
- P.J. McCarthy - *"All Aboard"*
- C. Verge - *The First Day Covers of the 1959 ADA Centennial*
- A. O'Reilly - *Here Come the Pigs*
- I. Kimmerly - *New Georgia TOK-TOK*

Silver / Argent

- R. Carswell - Confederate States Postmasters Provisionals
- F. Fawn - Hungary - First Madonna Issue 1921-1926 with Focus on Two-Currency Frankings
- O. Osborne - Canada: Colour Changes in the Imperial Penny Post Two Cent Map
- A.J. Hurst - The Postal History of Holy Island – Lindisfarne
- I. Kecsed - Austria 1867 Stamp Issue Postal History Including Postal Stationery
- L. Detcheverry-Vallee - Marques et Relations Postales entre St. Pierre et Miquelon et Sydney/Halifax 1830-1940
- C. Verge - Annie Howells & Achille Frechette: A Cross-Border Relationship
- S. Johnson - Semi-official Stamps and Mail used at Red Lake, Ontario
- R. Pinet - Montreal's Golden Age: Victorian Era Advertising Covers and Post Cards
- G. Portch - Jacques Cartier Quadricentenary Issue
- I. Nessel - The Hong Kong Geo. VI 8c; A Stamp Delayed by War,
- L. Rasmussen - Henry Hechler – Postcards
- C. Pomfret - Soldiers Letters and Related Items from the First Contingent C.E.F.
- K. Magee - And Then There Were None, British Spheres of Influence in Africa
- M. Mujibullah - "Railways"
- M. Heifetz - Tracking the Six Point Star
- I. McMahon - Guelph: The Royal City
- L. Rasmussen - Henry Hechler – Entrepreneur

- D. Wasserson - Southern Rhodesia 1923-1964
- D. Whiteley - Airmail Covers to Overseas Destinations, Except North America & Mexico: 1927-1942
- L-L. Tillard - La Marianne surchargée Saint-Pierre et Miquelon
- A.D. Hanes - Canadian Airmail Labels and Markings
- A. Alwast - Poland's First Post War Air Mail Issue 1946-1948
- M. Mujibullah - Pre-India 1852-1947

Silver Bronze / Bronze Argenté

- C. Troup - Welland Railroad - Railway Post Offices 1868-1922
- V. Skidra - First Soviet Occupation of Latvia 1940/41
- R. Blunk - History of Sending & Processing Mail on Rails in Germany
- R. Thorne - One Half-Penny Vermillion
- S. Johnson - Overseas Airmails Franked with the 50¢ Munitions Stamp 1942-1946
- D. Fernandes - British India: Westward Sea Post via Bombay
- M. Ullah - Animals Kingdom
- H. Janssen - Finding Frogs
- C. Rasmussen - Philatelic Reflections
- M. Nowlan - New Brunswick's Sesquicentennial
- C. Leclerc - Les Canadiens Célèbres

Bronze

- V. Skidra - City of Cesis, 800th Anniversary
- V. Skidra - The Lighthouses of Latvia
- J. Janthur - Cancellations on 3¢ Small Queen Stamps & Covers
- H. Kucera - Currency Conversions of Austria
- G. Payne - A Selection of Canadian Covers by Colorano 1973-1994

INTER-AMERICAN PHILATELIC EXHIBITION "BOGOTA 2007",
BOGOTA, COLOMBIA, SEPTEMBER 25-30 SEPTEMBRE 2007

Best in Traditional Class

Edward J. Nixon (Canada) - Canada, Small Queen Issue 1870-1897

Best in Postal History Class

Luis Alemany (Spain) - Espana: Convenios postales anteriores a la UPU

Best in Aerophilately

Luis Alemany (Spain) - Espana: Primeros vuelos y marcas con Espana (1871-1950)

Best in Thematic Class

David Braun Goldfeder (Mexico) - Librando Obstaculos: Puentes

Best in Revenue Class

Bill Welch (USA) - Revenue stamps of Colombia, 1858-1933

Best in Literature Class

Sociedad Filatelica de Chile (Chile) - Catalogo Especializado de Filatelia Chileana – CHILE 2006

Best in One Frame Class

Fred Fawn (Canada) - Hungarian Council Republic

Large Gold / Grand Or and Special Prize (material) and Jury's Felicitations (research)

Edward J. Nixon (Canada) - Canada, Small Queen Issue 1870-1897

Gold / Or

- Fred Fawn (Canada) - Hungarian Council Republic, OFE 95 and Special Prize (material)
- Sammy Chiu (Canada) - Chefoo and other Large CDS of the Chinese Imperial Post

Large Vermeil / Grand Vermeil

- Dick Malott (Canada) - Canadian Crash Covers
- William Longley (Canada) - Uruguay's Cifras Issue

**Special Class (non-competitive) /
Class special (hors concours)**

- Michael Madesker (Canada) - Sign Language
- Charles Verge (Canada) - The 1959 American Dental Association Centenary stamps

**ADVERTISING DEADLINE FOR THE NEXT ISSUE
OF THE CANADIAN PHILATELIST IS JANUARY 22, 2008.**

For further information contact Jim Szeplaki, (905) 646-7744 ext 223; jims@trajan.ca

**LA DATE LIMITE POUR SOUMETTRE VOTRE PUBLICITÉ POUR
LE PHILATÉLISTE CANADIEN EST LE 22 JANVIER, 2008.**

Pour plus amples renseignements, SVP contacter Jim Szeplaki,
(905) 646-7744 ext 223; jims@trajan.ca

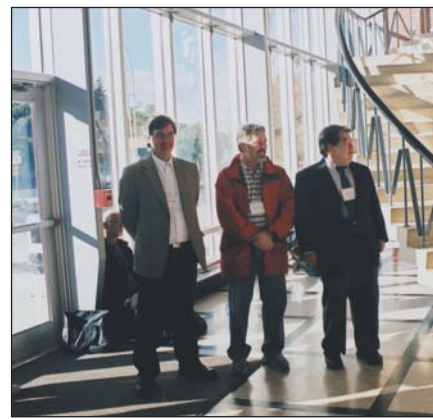
Here and There at Royal



President Rick Penko welcomes fellow members of The Royal, dignitaries and guests to ROYAL*2007*ROYALE.



Unveiling the low value definitives Beneficial Insects issues, released on October 12 to coincide with the opening day of the Convention, are (left to right) President Rick, Ian Kimmerly, President, Canadian Stamp Dealers' Association, and Yves Piché, Manager Stamp Marketing.



Peter Butler, behind the podium, introduces three ROYAL/ROYALE members selected to serve a renewable three-year term on Canada Post's Stamp Advisory Committee. Left to right, Robin Harris, Kevin O'Reilly, and Sam Chiu.



Treasurer Peter Kritz, standing, presents the treasurer's report at the Annual General Meeting. Seated is Charles Verge.



Work takes up a big chunk of time for your directors at each convention. Clockwise around the table are: Ken Magee, Royal/Royale Conventions, Peter Kritz, Treasurer, Richard Logan, Vice President, President Rick Penko, Charles Verge, Past President, George Pepall, Chapter Liaison, Elizabeth Sodero, Slide Program, Robin Harris, Webmaster, Hank Narbonne, Dealer Liaison.



Father and son exhibiting team, visiting from Kolkata (Calcutta), India, is Mujibullah and Faizullah Mohd.



Dr. David Piercey (left) and Ken Magee enjoying some refreshments at the President's Reception prior to the Awards Banquet.



Presenting the 50-year membership award to Dr. H. K. Schunk, Burlington, (right) is Michael Madesker, President 50-Year Club.



Smiling for the camera at the Saturday evening reception are George Pepall, Rose Shaman, Jim Oliver, and Ken Magee.

2007 Royale



Ready to answer questions at the AGM is Margaret Schulzke, Executive Assistant, and National Office Director Peter Butler.

The 2007 Convention in Toronto was a great success with more than 80 exhibitors vying for medal awards for their outstanding exhibits. And the entries were indeed outstanding. Nearly half the exhibits earned either a Vermeil or Gold award to qualify them to compete at the international level.

With the 80-plus competitive exhibits, comprising in excess of 300 frames, it was one of the biggest philatelic exhibitions in recent years held anywhere in Canada.

The show was also big in terms of the number of dealers in attendance: more than 50.

But because a picture is worth a thousand words, I'll let the photos on these pages do the talking.



Six individuals were elected as Fellows of the Society. They are, from left to right, Bob Thorne, Jacques Poitras, George Pepall, Doug Lingard, Alan J. Hanks, and Christiane Faucher.



The camera caught only four of the seven judges who worked feverishly for two days adjudicating the 80-plus exhibits. Pictured from left to right, Tom Fortunato, Rochester, Rodney Paige, Thorold, John McEntyre, Montreal, and Doug Lingard, Ottawa. Not shown are Paul Barsdell, Australia, Sam Chiu, and John Wilson, both of Toronto.



Two smiling faces at the Saturday night President's reception are Graham Locke, Montreal, left, and Herb McNaught.



J.L. Robertson accepting the Grand Award from Awards Chairman Garfield Portch for his exhibit of Stampless Cross Border Mail Between United States and Canada.



Garfield Portch presenting the Reserve Grand Award to Ron Brigham for his exhibit of The Dominion of Canada: Edward VII 1903-1911.



PRESIDENT'S page la page du PRÉSIDENT

by / par Rick Penko

A NEW YEAR OF RENEWAL

As a new year is upon us, many challenges and opportunities are on the horizon. At our last Annual General meeting in Toronto, our executive has added many new faces to the Board. I would like to welcome W. John Sheffield and Dr. J.J. Danielski as new directors. Richard Logan has kindly accepted the reins of Vice-President of our Society. Along with the rest of our dedicated board we are anxious to take on new initiatives and a revitalization of The RPSC.

The creation of a new mission statement is being studied and the Terms of Reference and Policy and Procedures documents are being reviewed to become more relevant. In this way we will bring new Board members up to speed on what past practices are still necessary and what areas need new strategies and initiatives. Over the next several months this process will be carried out culminating in a refreshing and new focus for our Society.

Our most pressing need is to bolster the memberships in the Society. The executive directors and officers have a plan to increase the 2008 listing by 200 new members. What can you do to help bring the Society back to financial security and the opportunity to fund new and important services and resources for members? As I have mentioned in the past, support from our grassroots membership is vital and always welcome. Throughout 2008, I will share successes in this important drive. If you have suggestions to share with the membership, please write and give me your thoughts.

Michael Madesker, one of Canada's most distinguished philatelists and Past President of our Society has penned a letter to life members about financial support elsewhere in the magazine. I would like to thank Michael for his generous and continuous support of our Society. Donations from any sector will be truly appreciated. Tax receipts for donations are available. If you would like further information please contact the National Office at 1-888- 285-4143 or email us at info@rpdc.org.

ROYALE*2008*ROYAL

Our next convention is fast approaching. The 80th Convention of The RPSC will be held in St. Foy, Quebec on May 16 - 18, 2008. The convention is in conjunction with the 400th anniversary celebration of the founding of Quebec. With the backdrop

DE LA NOUVEAUTÉ POUR LA NOUVELLE ANNÉE

Au début de cette nouvelle année, les possibilités et les enjeux qui pointent à l'horizon sont nombreux. Lors de notre dernière réunion générale annuelle, la direction a ajouté beaucoup de nouveaux visages au conseil d'administration. J'aimerais donc souhaiter la bienvenue à deux nouveaux directeurs, W. John Sheffield et J.J. Danielski. Richard Logan a aimablement accepté les rênes de la vice-présidence de notre société. De concert avec les autres membres fidèles du conseil, nous sommes impatients d'entreprendre de nouvelles initiatives et la revitalisation de La SRPC.

La création d'un nouvel énoncé de mission est à l'étude. En outre, la documentation sur les politiques et procédures, et sur le mandat de la société est en révision afin d'être mise à jour. Ainsi, nous mettrons les nouveaux membres du conseil au courant des anciennes pratiques qui sont toujours nécessaires et des domaines où de nouvelles stratégies et de nouvelles initiatives s'imposent. Le processus s'étendra sur plusieurs mois et débouchera sur une orientation de la SRPC renouvelée et rafraîchie.

Notre besoin le plus pressant est de promouvoir les adhésions à la société. Les directeurs administratifs et le personnel ont comme objectif d'ajouter 200 nouveaux membres à la liste de 2008. Que pouvez-vous faire pour aider la société à retrouver la sécurité financière et pour financer de nouvelles ressources et de nouveaux services importants pour les membres? Tel que je l'ai déjà dit par le passé, le soutien de notre base de membres est essentiel et toujours bienvenu. Tout au long de l'année 2008, je vous tiendrai au courant de nos succès à cet égard. Si vous avez des suggestions à soumettre aux membres, s'il vous plaît, écrivez-moi pour m'en faire part.

Michael Madesker, ancien président de la société et l'un des philatélistes canadiens les plus renommés, a rédigé une lettre aux membres à vie au sujet du soutien financier. Vous la trouverez dans les pages du présent numéro. J'aimerais remercier Michael pour son soutien généreux et continu envers notre société. Les dons de toute provenance sont toujours très appréciés et nous donnons des reçus pour don de charité. Si vous désirez des renseignements supplémentaires, veuillez vous adresser au Bureau national, au 1-888-285-4143

ROYALE*2008*ROYALE

Notre prochain congrès arrive à grands pas. En effet, le 80e congrès de La SRPC aura lieu à Sainte-Foy, Québec, du 16 au 18 mai 2008, en même temps que les fêtes du 400e anniversaire de la fondation de la ville. Dans un décor offrant en toile de fond l'une des plus belles villes du

of one of the most beautiful cities in the world tied with an important celebration of Canadian history it is bound to be one of the most exciting Royals that you will ever attend.

Over the past number of years, show organizer Mr. Jacques Poitras, has been working hard with his committee to create an event to remember. Accommodations are at a premium, so book early to avoid disappointment. For further information, visit the Website at www.royale2008.org. See you there! ☒

monde, où se déroulera la célébration d'un moment important de l'histoire du Canada, nul doute que Royale de 2008 sera l'une des plus formidables expositions philatéliques à laquelle vous n'avez jamais assisté.

Depuis quelques années, l'organisateur de l'exposition, M. Jacques Poitras travaille très fort avec son comité pour créer un évènement inoubliable. L'hébergement est déjà très recherché, alors dépêchez-vous de faire vos réservations afin d'éviter les déceptions. Pour obtenir des renseignements supplémentaires, visitez notre site Web, le www.royale2008.org. À bientôt, à Québec! ☒

MEMBERSHIP report Des nouvelles de nos MEMBRES

CHANGE OF ADDRESS ? Changes can be made on-line at www.rpsc.org "Members Login" or by contacting the National Office.
VOUS CHANGEZ D'ADRESSE? Effectuez le changement en ligne à www.rpsc.org "Members Login" ou en prenant contact avec le Bureau national.

NEW MEMBERS / NOUVEAUX MEMBRES

The following applications were received and are here-with published in accordance with the Constitution. If no adverse reports are received within 30 days of publication, applicants will be accepted into full membership. Any objections should be sent to the National Office, P.O. Box 929, Station Q, Toronto, ON M4T 2P1.

Les demandes d'adhésion ci-dessous ont été reçues et sont publiées en conformité avec la constitution. Si aucun commentaire n'est communiqué au Bureau national, (C.P. 929, Succursale Q, Toronto, ON, M4T 2P1) d'ici 30 jours, les adhérents seront acceptés comme membres.

(M) minor - activity guaranteed by parent or guardian / mineur - activités philatéliques garanties par un parent ou un tuteur.

INDIVIDUAL MEMBERS / MEMBRES À TITRE PERSONNEL

I-28702 • Mr. Larry Debaermaeker
Canada

I-28703 • Mr. Michael Parsons
Mint Canada, U.S., Newfoundland, Iceland

I-28704 • Mr. Donald Cheney
Canada, British Colonies, Flight Covers

I-28705 • Mr. Frank Naabye

I-28706 • Mr. Gordon Arsenaull
Canada Mint

I-28707 • Mr. Fred Lynch
Canada, United Kingdom, United Nations

I-28708 • Mr. Lionel Pesant

I-28709 • Mr. Michel Millescamps

I-28710 • Mr. Réal Longtin

I-28711 • Mr. Serge Lalande

I-28712 • Mr. Ernest Zelniker
Early Canadian, Early Israeli

I-28713 • Mr. André Blais

I-28714 • Mr. Raymond Racette

I-28715 • Mrs. Michèle Perreault

I-28716 • Mr. Lloyd Darlington
British North America

S-28717 • Mr. Ted Lesica
Nature stamps, WWII German stamps

I-28718 • Mr. David Tribe
Canada, Australia, Ascension Island, Norfolk Island

I-28719 • Mr. Peter MacDonald
Nineteenth-century used Canada and Provinces

I-28720 • Mr. Thomas Dastous

I-28722 • Mr. M. Daniel Gray

I-28723 • Mr. Mark Patterson

I-28724 • Mr. Martin King

I-28726 • Ms. Christine Hampton

I-28727 • Mr. Larry Folbar

I-28728 • Mr. Glenn Barkey

I-28729 • Mr. Solange Normandeau

I-28730 • Mr. Henri St-Amour

I-28731 • Mr. James Kennedy

I-28732 • Ms. Irene Pestill

I-28733 • Mr. Serge Brunelle

I-28734 • Mr. Andy van Ginneken

I-28735 • Mr. Roger Gilmore

I-28736 • Mr. Dominique Rousseau

I-28737 • Mr. Roch Breton

I-28738 • Mr. David Williams
Used Canada stamps, including varieties and cancellations

I-28739 • Mr. Andrew Fox

I-28740 • Ms. Ginette Vaillancourt

I-28741 • Mr. Gilles Bourgeois

I-28742 • Mr. Gilles Gosselin

I-28743 • Mr. Miguel Aguilar Caballere

I-28745 • Mr. Jean Dallaire

I-28746 • Mrs. Murielle Goyette

I-28747 • Mr. Claude Fortin,

I-28748 • Mr. John Armstrong

I-28749 • Ms. Gyna Liard

I-28750 • Mr. Gaston Therrien

I-28751 • Ms. Judith Nau

I-28752 • Mr. Richard Jordan

I-28753 • Mr. Marc Beaupré

I-28754 • Ms. Frances Young

I-28755 • Mr. Jean-Yves Girouard

I-28756 • Mr. C. Hugh McPherson

I-28757 • Mr. Étienne Burdin

I-28758 • Mr. Alan Brookhouse

I-28759 • Mr. Paul Nicholls

I-28760 • Mr. Marc Villeneuve

I-28761 • Mr. Michael O'Connor

I-28762 • Ms. Yang Yang

I-28763 • Mr. Peter Knapp

I-28764 • Mr. Brian Cooper

I-28765 • Ms. Joaquin Kuhn

I-28766 • Mr. Arthur Liberman

I-28767 • Mr. Patrick Toole

I-28768 • Ms. Elva Derbyshire

I-28769 • Mr. Larry Graham

I-28770 • Mr. Edward Davies

I-28771 • Mr. Theo Vreeburg

I-28772 • Mrs. Marion Rigo

I-28773 • Ms. Anna Spencer

I-28774 • Mr. John Laing

I-28775 • Mr. Richard Stewart

I-28776 • Mr. Bob Henderson

I-28777 • Mr. David Shooter

I-28778 • Mr. John Eby

I-28779 • Mr. Lecel Neves
WW airmail, Baltic states, Russia, Ethiopia, Canada

I-28780 • Mr. Richard Judge
Canada Pre 1960

I-28781 • Mr. Charles Flynn
First Flight Covers of Canada (all aspects of aero-philatelic use); George VI & Queen Elizabeth (to 1970); Postal Stationery

I-28782 • Mr. Rocky Longshaw

I-28783 • Ms. Jackie Hart

I-28784 • Mr. Philip Visser
Specialist collections of the Netherlands, Australia and Canada

I-28785 • Ms. Judy Galbraith
Canada, British Commonwealth, Boxer Dogs

RESIGNED MEMBERS / MEMBRES DÉMISSIONNAIRES

I-20204 • Mr. Warren J. Seton

I-27471 • Mr. Raymond K. Loh

DECEASED MEMBERS / MEMBRES DÉCÉDÉS

I-8633 • Mr. John Zarins

I-13200 • Mr. Donald A. Machum

I-14654 • Dr. John W. Gibler



MESSAGES from the National Office MESSAGES du Bureau national

by / par Peter Butler,
Director, National Office / directeur, Bureau national

It's probably realistic to say that most readers pay very little attention to the magazine's masthead, the first few pages at the front of the magazine that list the Executive, the Directors and the Officers of The RPSC (EDO's), with their responsibilities, along with an invitation to join the Society. I have recently come to think that the invitation is not necessary since 99% of readers are already members. Perhaps it should read, "Advantages to Membership". Regardless, it's something that doesn't usually generate a lot of interest. It's there if you need it but most readers seldom do.

Perhaps I can persuade you to look closely, just this once, to note the many changes that have taken place since the listings were printed in the November/December issue. There are several newly elected or appointed EDOs, a few have been dropped and some of the responsibilities have been re-assigned or re-named. I also draw to your attention, two "advantages" that have been changed/added recently.

Along with the changes, you should be aware that the Board is now looking to develop a new mission statement, to clarify and identify the Terms of Reference for the various portfolios and the Society and to revamp and re-organize our *Policies and Procedures Manual*. This will take time, a good deal of discussion and a high level of commitment from everyone listed as an EDO as well as other interested parties/members. There will be more about that initiative in future issues.

There are two initiatives that have been assigned to the National Office: insurance for members and chapters and the development of new resources for the membership. I would like to bring you up to date on these two items.

The insurance issue continues to be a troublesome one. Ten percent of our Quebec members who have personal insurance coverage for their stamp collections from Hugh Wood Canada Ltd. (HWCL), have been told that their policy cannot be renewed. Quebec will no longer allow companies that do not operate in that province to offer services to residents. For so few policies in Quebec, the cost of obtaining a broker's license and so on is out of the question for the company. We have contacted all members affected by this decision with our current recommendation and we are working with HWCL and a Quebec broker to try and resolve the problem. At this point, there is nothing positive to report.

The other aspect of the insurance responsibility is the third party liability for our Chapters. Presently, it is status quo for those clubs that are insured through The RPSC. But changes are pending. In talks with HWCL we are looking at a variety of possibilities for the lowering of rates and

Il est sans doute réaliste de dire que la plupart des lecteurs portent très peu attention au bloc générique de notre périodique d'un numéro à l'autre. Il s'agit des quelques pages du début, où se trouve la liste des membres du bureau, des directeurs et du personnel de La SRPC ainsi que leurs responsabilités. Vous y verrez aussi une invitation à devenir membre. Dernièrement, je me suis dit que l'invitation n'était probablement pas nécessaire puisque 99 % des lecteurs sont déjà membres. « Avantages d'être membre » serait peut-être plus approprié. Néanmoins, la section ne suscite généralement pas beaucoup d'intérêt. Elle est là lorsque nous en avons besoin, ce qui est rarissime pour la plupart des lecteurs.

Mais, je réussirai peut-être à vous convaincre d'y jeter un coup d'œil attentif, cette fois seulement, car de nombreux changements ont été effectués depuis la parution du numéro de novembre-décembre. Certaines fonctions sont remplies par de nouvelles personnes, élues ou nommées, d'autres ont été abandonnées et des responsabilités ont été redonnées ou renommées. J'aimerais également attirer votre attention sur deux « avantages » qui ont été changés ou ajoutés dernièrement.

En plus de ces changements, nous vous informons que le conseil d'administration réfléchit à l'élaboration d'un énoncé de mission afin de clarifier et de définir le mandat de chaque portefeuille et celui de la société; il souhaite aussi mettre à jour et réorganiser le manuel des politiques et des procédures. Cela prendra beaucoup de temps, de nombreuses discussions et un degré élevé de motivation de la part de chacun des directeurs, de toutes les autres parties intéressées et des membres. Nous en parlerons à nouveau dans les prochains numéros.

Les deux avantages mentionnées plus haut, l'assurance pour les membres et les clubs membres, et la mise au point de nouvelles ressources pour l'adhésion, ont déjà été confiées au Bureau national. Voici les dernières nouvelles à ce sujet.

La question de l'assurance est toujours aussi compliquée. Dix pour cent de nos membres québécois ont une couverture personnelle pour leurs collections avec Hugh Wood Canada Ltd. (HWCL) et ils ont appris qu'ils ne pourront pas renouveler leur police. En effet, les compagnies qui n'ont pas de bureau au Québec ne seront plus autorisées à offrir des services aux résidents de cette province. Le coût d'obtention d'un permis de courtier, etc. est hors de question pour HWCL qui n'a que quelques clients au Québec. Nous avons pris contact avec tous les membres qui sont touchés par cette décision et leur avons fait des recommandations, mais nous continuons de travailler avec HWCL et un courtier du Québec afin de résoudre le problème. Nous n'avons encore rien de positif à annoncer à cet égard.

L'autre volet de l'assurance responsabilité est celui de la responsabilité civile pour nos clubs membres. Pour l'instant, le statu quo est maintenu pour les clubs qui sont assurés par l'intermédiaire de la SRPC, mais nous anticipons des changements. Nous discutons avec HWCL afin d'explorer diverses possibilités qui nous permettront d'obtenir des rabais et par le fait même, la participation d'un plus grand nombre de clubs membres. Le message doit être clair. Les

thereby getting more Chapters involved. The messages need to be clear. It is really in a club's best interest to have insurance but most don't. The reality is that clubs have a great variance of needs (meeting location, size of membership, number of activities, and so on.), lessors are required to obtain proof of insurance from clubs renting space but many do not demand it and many clubs are not well informed as to the need for coverage.

Ultimately, while not responsible in a legal sense, The RPSC must try to act in the best interests of the member clubs and the individual members. We try hard to improve the communications about insurance and we are working diligently to improve the product. It remains a chore. Please keep your letters and calls coming asking for assistance but have patience with our results and be kind to our volunteers and staff!

Secondly, we have for a long time had a statement on the website that The RPSC has resources to assist members in the disposition of their collections, advice on options available to them and suggestions to prepare families for the inevitable final closing of your albums. The fact is, as several members who have contacted us for such information have discovered, that there are no documents available on the topic. Perhaps a brief conversation over the telephone is helpful but there is nothing "downloadable." We are in the process of correcting this situation as the website now attests. In the New Year, such information will be available through the National Office and from the website. Thanks are extended to those members who are patiently waiting for these resources. We are confident that the wait will prove worthwhile. Again, patience is a virtue!

On behalf of Margaret Schulzke and myself, may I wish all members the very best of good wishes for a Happy New Year. May you be successful in keeping most of your New Year's resolutions and may all those stamp collecting hopes and wishes for 2008, eventually come true! ☒

clubs ont vraiment intérêt à avoir une assurance, mais la plupart n'en ont pas. En réalité, les besoins des clubs sont très variés (lieu de réunions, nombre de membres et d'activités, etc.). Quant aux locateurs, ils ont l'obligation d'obtenir une preuve d'assurance de la part des clubs auxquels ils louent un local, mais beaucoup ne la demandent pas et les clubs sont mal informés de la nécessité d'une couverture d'assurance.

En dernier ressort, même si La SRPC n'a pas de responsabilité légale, elle doit faire son possible pour agir dans l'intérêt des membres à titre personnel ou à titre de clubs. Nous travaillons fort pour essayer d'améliorer les communications au sujet de l'assurance et nous travaillons aussi fort afin d'améliorer le produit. Cela demeure une tâche fastidieuse. S'il vous plaît, écrivez et demandez de l'aide. Par contre, s'il vous plaît, soyez patients à l'égard de nos résultats et gentils avec notre personnel et nos bénévoles.

Deuxièmement, il y a longtemps eu sur notre site Web, une déclaration selon laquelle La SRPC avait les ressources nécessaires pour aider les membres qui veulent disposer de leurs collections, qu'elle donnait des conseils sur les options qui s'offrent à eux et des suggestions pour préparer les familles à la fermeture définitive de leurs albums. Le fait est que, et plusieurs membres qui ont fait appel à nous pour recevoir des renseignements l'ont constaté, nous n'avons aucune documentation à offrir à ce sujet. Une brève conversation téléphonique peut avoir eu lieu, mais il n'y a rien à « télécharger ». Nous sommes en train de corriger la situation, tel qu'en fait maintenant foi le site Web. Au cours de la nouvelle année, ces renseignements seront donnés par le Bureau national et dans le site Web. Nous remercions les membres qui attendent patiemment les ressources en question. Nous sommes certains que leur attente s'avérera profitable. Encore une fois, la patience est une vertu!

Au nom de Margaret Schulzke et en mon nom personnel, je souhaite à chaque membre mes meilleurs vœux de bonne et heureuse année. Puissiez vous être fidèles à toutes vos résolutions du Nouvel An, et puissent tous vos désirs et tous vos espoirs philatéliques se réaliser en 2008! ☒

an excerpt from the minutes of The RPSC Board of Directors Meeting

Saturday, October 13th 2007.

A motion made by Peter Kritz, seconded by George Pepall:

that there be an increase in our annual dues of \$4.50 (to \$34.50) effective March 1st, 2008. If a member renews online there will be no increase in dues for the coming year only. Carried

A motion made by Richard Logan, seconded by Michael Nowlan:

that Life Memberships will be changed to 20 X \$34.50 (\$690.00) and all other memberships are to be increased by 15%. Chapters and Affiliates will be \$40.00, subscribers only will be \$28.50, members only will be unchanged at \$15.00. Carried

Extrait du procès-verbal de la réunion du conseil d'administration de la SRPC

Le 13 octobre 2007

Sur la proposition de Peter Kritz, appuyée par George Pepall :

il est suggéré que la cotisation annuelle soit augmentée de 4,50 \$ (à 34, 50 \$) à compter du 1er mars 2008. Pour l'année prochaine seulement (2008), les membres qui renouvellent leur adhésion en ligne n'auront pas à payer cette augmentation. Proposition adoptée

Sur la proposition de Richard Logan, appuyée par Michael Nowlan :

il est suggéré que le coût d'une adhésion à vie soit dorénavant de 20 X 34,50 \$ (690,00 \$) et que toutes les autres adhésions soient augmentées de 15 %. Les clubs membres et affiliés paieront 40,00 \$, ceux qui désirent uniquement s'abonner paieront 28,50 \$ et ceux qui souhaitent uniquement être membres continueront de payer 15,00 \$. Proposition adoptée



Chapter CHATTER PARLONS des chapitres

by / par George Pepall, FRPSC

Do you, or does your club, sometimes have an old album to dispose of that the members don't want to bid on at a club auction or buy at a clearance sale? I've been amazed recently at how well an old album or accumulation of stamps on or off paper will sell at a weekly public auction of household and collectible items. I saw a typical schoolboy album with about 100 modest used stamps sell for \$37, and routine sets of Canada or USA from the 1920s or '30s sell for \$40 or more. What I'm suggesting is that disposing of material that doesn't appeal to your own club members may bring in a surprising number of dollars for your club in a large household auction, even after commission.

While reading a Letter to the Editor of *The Canadian Philatelist*, I thought of a novel idea for making First Day Covers of upcoming issues of Canadian stamps within the local clubs. Why not create covers with First Day of Issue stamps in a subgroup of interested members, and then arrange to mail them to each other on the date of issue? If any member has an artistic bent, special cachets could be added to the envelopes. Covers could be pre-prepared at a club meeting by participants, and money collected to buy the required number of stamps. Then one person could be designated to buy and affix the stamps, and have the covers suitably date-stamped by a cooperative postal clerk. (Thanks to Kelly Halabura for bringing this idea to mind.)

As a result of meetings at The Royal Show in Toronto in October, moneys have been made available to operate a Canada-wide competition for local club newsletters. At the moment, I see samples of about 20 different newsletters randomly each year, which I appreciate receiving. Newsletters serve several valuable purposes within a local club, one of which is to keep members involved who cannot attend meetings regularly. Although both the information and the presentation in the samples I receive are generally very effective, suggestions for improvement might be appreciated by the editors.

The American Philatelic Society runs a newsletter contest that has helped local clubs communicate more meaningfully with their members. However such a competition is arranged, it would offer prizes in several categories that recognize the number of members in each club. More important than recognition would be the feedback offered to the editors by the judges. Please let me know, by phone, e-mail or in person, your thoughts and suggestions for such a competition.

Another development arising from directors' meetings of The Royal in October is a motion to ensure that a Royal director will be present and available at every national show

Vous est-il déjà arrivé, à vous ou à votre club, de vouloir vous défaire d'un vieil album qui n'attire personne dans les ventes aux enchères ni dans les ventes de débarras? Dernièrement, j'ai été épaté de voir comment un vieil album ou un paquet de timbres, montés ou non sur papier, pouvait avoir du succès dans les ventes aux enchères hebdomadaires d'articles ménagers et d'objets de collection. J'ai vu un album type d'écolier comportant une centaine de timbres usés et sans prétention se vendre environ 37,00 \$, et un ensemble tout à fait ordinaire des années 20 ou 30 sur le Canada ou les États-Unis se vendre 40,00 \$ ou plus. Tout cela pour dire que des articles qui semblent sans intérêt pour les membres de votre club pourraient lui rapporter une somme étonnante dans une grande vente aux enchères d'articles ménagers, et ce, même une fois la commission payée.

En lisant l'une des lettres au rédacteur publiées dans *le Philatéliste canadien*, il m'est venu une idée sur une façon originale de préparer des plis Premier jour dans les clubs locaux pour les prochaines émissions de timbres canadiens. Pourquoi un sous-groupe de membres, que l'idée intéresse, ne se chargerait-il pas de créer des enveloppes portant un timbre premier jour d'émission pour ensuite se poster ces enveloppes les uns aux autres à la date d'émission? Si certains ont la fibre artistique, ils pourraient ajouter des cachets particuliers à l'enveloppe. Les plis seraient préparés par les participants au cours d'une réunion du club et on amasserait de l'argent pour acheter le nombre de timbres requis. Après quoi, quelqu'un serait désigné pour se procurer les timbres, les apposer et les faire oblitérer par un commis des postes. (Je remercie Kelly Halabura de m'avoir donné l'idée.)

Comme suite aux réunions tenues dans le cadre de La Royale à Toronto, en octobre, des fonds ont été alloués pour organiser un concours national visant les bulletins d'information des clubs locaux. Pour l'instant, environ 20 bulletins différents me passent entre les mains chaque année, et je me réjouis de les recevoir. Ces bulletins sont utiles à bien des égards dans les clubs locaux. Par exemple, ils permettent à ceux qui ne peuvent pas assister régulièrement aux réunions d'être de la partie. Dans les échantillons que j'ai reçus, tant l'information que la présentation étaient en général très efficaces, mais les rédacteurs en chef de ces bulletins tireraient sans doute profit de quelques suggestions en vue d'une amélioration.

L'American Philatelic Society organise un concours de ce genre grâce auquel les clubs locaux ont pu améliorer la communication avec leurs membres. Indifféremment de la formule adoptée pour nos concours, des prix seraient offerts dans plusieurs catégories compte tenu du nombre de membres de chaque club. La reconnaissance ainsi obtenue serait importante, mais pas autant que la rétroaction donnée aux rédacteurs en chef par les juges. Je vous invite donc à me faire part de vos idées et de vos suggestions à propos d'un tel concours par courriel, en personne, ou par téléphone.

Une autre nouveauté est ressortie des réunions des directeurs, soit une motion à l'égard de la présence et de la disponibilité d'un

each year. She or he will keep a table with information about member services of The Royal, and answer questions and dispense information about any national matters in philately. As director in charge of Chapter Liaison I have undertaken to make sure that a Royal director or representative is present at all national shows. Your Royal directors are committed to assisting your enjoyment of the hobby.

And now here is a bit of quaint Canadian literature related to stamps that jumped out at me as I read a book by the late Edna Staebler of Waterloo County entitled *Cape Breton Harbour* (Pages 69-70). The author visited Neil's Harbour, NS and tells of her encounters with the local fishermen:

"Aint' like one feller I knowed had a lot o' schoolin'; nice feller 'e were too, lived in Rose Blanche in summer time, and d'you know what 'e done? He'd get used up old stamps and stick 'em down into a book. Yes, dear, ye never seen anythin' so foolish like as that man, full growed, sittin' there stickin' them stamps and lookin' at 'em like they was a fortune 'e'd got hold of. One day I tooked he a packet o' letters I found in old strongbox o' me grandf'er. Well say, I thought 'e were takin' a fit when 'e seen 'em, and when 'e stopped ravin', 'e took wallet out 'o britch pocket and hands me a five dollar bill. But I give it back, I wouldn't take money for no used up ol' stamps ain't no good for nobody."

Has anyone seen other references to stamp collecting or collectors in books, movies or television? As you can see from the above excerpt, you never know where something about our hobby might appear. ☒

directeur de La Royale à chaque exposition nationale annuelle. Il ou elle s'occupera d'une table où seront offerts des renseignements sur les services aux membres. La personne répondra aux questions et donnera des renseignements sur toute question de philatélie nationale. Vos directeurs sont là pour vous et pour votre passe-temps.

Voici maintenant un peu de littérature canadienne, haute en couleur et se rapportant aux timbres, sur laquelle je suis tombé alors que je lisais un livre de feu Edna Staebler du comté de Waterloo, intitulé *Cape Breton Harbour* (Le havre du Cap-Breton) (Pages 69, 70). L'auteure, qui a visité Neil's Harbour en Nouvelle-Écosse, relate ses rencontres avec un pêcheur local.

« Pas pantoutte » comme un gars qu'j'ai connu qu'avait ben de l'éducation... un bon gars itou, l'été, y restait à Rose Blanche, pis savez-vous ce qu'y a faitte? Y ramassait des vieux timbres, pis yé collait dans un liore. Ouais, mon vieux, une folie comme la sienne, c'tait pas imaginable : un homme fait, assis là, en train de coller ces bonguennes de timbres pis de les examiner comme si y avait une fortune ente les mains. Une bonne fois, j'ai pris-un paquet d'lettres qu'étaient dans le vieux coffre à mon grand-père. Ben disons qu'j'ai pensé qui perdait la boule quand j'l'ai vu, pis quand y a arrêté ses sparages, pis qu'y a sorti l'portemonnaie de sa poche de cuisse, pis qui m'a donné un bill de cinq. Mais j'y ai r'donné, j'prendrais pas une cenne pour des vieux timb' pas bons pour parsonne.»

Quelqu'un d'autre a-t-il remarqué des allusions à la collection de timbres ou aux collectionneurs dans un livre, un film ou à la télévision? Comme vous l'avez constaté dans l'extrait ci-dessus, on ne sait jamais où on peut trouver quelque chose sur notre passe-temps. ☒

RPSC
PHILATELIC
RESEARCH
FOUNDATION



SRPC
FONDATION DE
RECHERCHE
PHILATÉLIQUE

STOCKS AND BONDS DONATION OPPORTUNITY

**A UNIQUE AND IMPORTANT WAY
TO MAKE A VALUABLE INVESTMENT**

Some time ago, the Federal Government allowed charitable organizations to offer tax receipts to their donors for 100% of the amount of the gift of stocks and securities. The benefit to the holder of the stocks or other securities is that when the stock is donated to the charity, the capital gains on the stock is eliminated and the donor gets a tax receipt to the full value of the appreciated cost of the security.

This initiative has an enormous positive impact for organizations in the not for profit, charitable sector and the Royal Philatelic Society of Canada Philatelic Research Foundation as a charity, is in a position to benefit enormously from this incentive. The charity must liquidate the security once it is received which allows access to important cash – and the donor gets to use the tax receipt against their income for the year!

The beauty of this legislation for donors is the tax advantage it provided: no capital gains tax and a tax receipt worth 100% of the value of the stock! For some, this could be extremely advantageous.

Contact Ted Nixon at the RPSC Philatelic Research Foundation today!

10 Summerhill Avenue, Toronto, ON M4T 1A8

Tel: 416-921-2077 • 1-888-285-4143

E-mail: member_services@rpsc.org

RPSC
PHILATELIC
RESEARCH
FOUNDATION



SRPC
FONDATION DE
RECHERCHE
PHILATÉLIQUE

LES DONS D' ACTIONS OU D'OBLIGATIONS

**UNE FAÇON UNIQUE ET NON NÉGLIGEABLE
D'EFFECTUER UN INVESTISSEMENT INTÉRESSANT**

Il y a quelque temps, le gouvernement fédéral a autorisé les organismes de bienfaisance à remettre à leurs donateurs des reçus aux fins d'impôt représentant 100 % du montant des actions ou des obligations dont ils ont fait don. Le titulaire tire avantage du fait qu'elles sont données à un organisme de bienfaisance, car les gains en capital sont alors exclus et il obtient un reçu aux fins d'impôt couvrant le plein montant des titres.

Une telle disposition a des conséquences extrêmement positives pour ces organismes. Dès lors, la Fondation de la Société royale de philatélie du Canada pour la recherche philatélique peut grandement en profiter. L'organisme de bienfaisance qui reçoit des titres doit les liquider et peut ainsi bénéficier d'importantes sommes d'argent comptant – quant au donateur, il peut utiliser le reçu aux fins d'impôt pour l'année!

La beauté de cette disposition à l'égard des donateurs est l'avantage fiscal qu'elle leur accorde : aucun impôt sur les gains en capital et un reçu aux fins d'impôt correspondant à 100 % de la valeur de l'obligation! Cela peut s'avérer extrêmement avantageux pour certains.

Prenez contact avec Ted Nixon de la Fondation de la SRPC pour la recherche philatélique dès aujourd'hui!

10 Summerhill Avenue, Toronto, ON M4T 1A8

Tel: 416-921-2077 • 1-888-285-4143

courriel: member_services@rpsc.org



chapter MEETINGS RÉUNIONS des clubs membres

AJAX PHILATELIC SOCIETY

RPSC Chapter 163 meets the 2nd and 4th Thurs, Sept. to June at the Ajax Public Library, 65 Harwood Ave. S., 6-9 p.m. Contact: Steve Warcop, 1511 Silver Spruce Dr., Pickering, ON L1V 5G9. (416) 875-6446. E-mail: stevewarcop@hotmail.com.

AMICALE DES PHILATÉLISTES DE L'OUTAOUAIS (APO)

Les membres de l'APO, chapitre 190 de la SRPC, se réunissent tous les jeudis de début septembre à fin avril, de 18h30 à 21h00. Les réunions ont lieu au Châlet Fontaine, 120 rue Charlevoix à Hull (Québec). Carte de membre 20 \$ (10\$ pour les moins de 16 ans). Vendeurs, encans, exposition. / Members of the APO (Chapter #190) meet every Thurs. from Sept. to the end of April, 6:30 to 9 p.m. in the Châlet Fontaine, 120 Charlevoix, Hull, Québec. Membership \$20 (\$10 under 16). Dealers, auctions, show and bourse. Contact: A. Bossard, 5-1160 Shillington, Ottawa, ON K1Z 7Z4; (613) 722-7279; e-mail: isabelle.alain@sympatico.ca

CLUB PHILATÉLIQUE "LES TIMBRÉS" DE BOISBRIAND

Section adulte: Tous les lundis soir de 18h45 à 21h. Section junior: Tous les samedis de 9h à 11h30; au Centre socio-culturel de Boisbriand, 480 rue Chavigny, Boisbriand, QC, J7G 2J7; information: Mrs. Linda Nadon Présidente 450-435-8604 et M. Maurice Touchette Vice-président-Trésorier 450-435-5973.

BARRIE DISTRICT STAMP CLUB

Chapter 73, meets the second Thursday of the month, except July and August, at St. Andrew's Presbyterian Church, Owen and Worsley Streets, Barrie, at 7:00 p.m. Contact Michael Millar, FRPSC, 292 Shanty Bay Road, Barrie, ON L4M 1E6, mmillar@apexia.ca 705-726-5019.

BRAMALEA STAMP CLUB

RPSC Chapter 144 meets the 1st Sun. Oct. to June 2-4 p.m. and the 3rd Tues. year round 7:30-9:30 p.m. at Terry Miller Recreation Complex, Williams Parkway (between Dixie Rd. and Bramalea Rd.) Brampton, ON. Contact: Bramalea Stamp Club, Box 92531, Bramalea, ON L6W 4R1.

BRANTFORD STAMP CLUB

RPSC Chapter 1 meets on the 1st and 3rd Tues. Sept. to May, and the 1st Tues. in June, at the Woodman Community Centre, 491 Grey St. ON at 7 p.m., short business meeting at 8 p.m., followed by a program. Circuit books, five dealers. Contact: Secretary, Box 25003, 119 Colborne St. W., Brantford, ON N3T 6K5; (519) 753-9425

BRITISH COLUMBIA PHILATELIC SOCIETY

Meetings occur Wednesday nights at 7:30 PM from Sept. to June, at West Burnaby United Church, 6050 Sussex Ave., Burnaby BC, near the Metrotown Skytrain station. See our website at www.bcphilatelic.org for details of meeting times and locations. For more information call Bob Ingraham, President, at (604) 694-0014.

BROCK/PRESCOTT STAMP CLUB

Meets the 3rd Wed. Sept. to May at 7 p.m. at Wall Street United Church, 5 Wall St., Brockville, ON. Contact Roy Brooks at (613) 342-7569.

CALGARY PHILATELIC SOCIETY

(Chapter 66) Regular meeting: 1st Wed. except July and Aug., 7 p.m. Auctions on 3rd Wed. of month except Dec., 7:30 p.m. Kerby Centre, 1133 7 Ave. SW. Contact: Calgary Philatelic Society, PO Box 1478, Station M, Calgary, AB T2P 2L6, or visit www.calgaryphilatelicociety.com

CAMBRIDGE STAMP CLUB

Chapter 4 - Meets on the first Thursday of the month (all year) and the third Monday of the month (September to June) on the second floor of the Allan Reuter Centre, 507 King Street, Cambridge. Visitors welcome. Information Ron Adkin, 1736 Briarwood Drive., Cambridge, ON N3H 5A7 (519) 650-5136.

CANADIAN AEROPHILATELIC SOCIETY

RPSC Chapter 187, yearly membership for Canadians \$20 Cdn, for Americans \$22 Cdn. and for all other countries \$25. No formal meetings, but members join the RA Stamp Club meetings at the RA Centre, 2451 Riverside Dr., Ottawa, ON at 7:30 p.m. every Mon. except June to Aug. Contact: Brian Wolfenden, 203A Woodfield Drive, Nepean ON K2G 4P2. (613) 226-2045.

CANADIAN ASSOCIATION FOR ISRAEL PHILATELY

Chapter 76, Jan Bart Judaica Study Group, meets on the 2nd Wed. except July and Aug., 7 p.m., at Lipa Green Bldg., 4600 Bathurst St., Willowdale, ON. Contact: Joseph Berkovits, 33-260 Adelaide St. E., Toronto, ON M5A 1N1. (416) 635-1749.

CANADIAN FORCES BASE TRENTON STAMP CLUB

Chapter 89 meeting on the 1st and 3rd Wed. Sept. to June at the Trenton Seniors' Club (Club 105) at the corner of Bay and Campbell Streets at 6:45 p.m. Contact: G.A. Barsi at (613) 394-2024, M. Leedham at (613) 392-7462 or S. Taylor at (613) 393-4316.

COBOURG STAMP CLUB

Chapter 106 meets the 2nd and 4th Wednesdays of each month (Sept through May) and once a month during June, July and August at the Salvation Army Citadel, 59 Ballantine St., Cobourg. For further information re club activities please contact Harold Houston at 905-885-0075 or e-mail hhouston@cogeco.ca.

COLBORNE STAMP CLUB

Chapter 205 meets on the 2nd and 4th Tues. Sept. to May at 7 p.m. in the Seniors' Drop-In, Vourneen "Buff" Jack Memorial Centre, 14 Victoria Square. Contact: Box 1073, Colborne, ON K0K 1S0.

COLLINGWOOD - GEORGIAN BAY COIN & STAMP CLUB

Chapter 168 meets 3 times a month year-round: 1st Tuesday of the month at the Real Can. Superstore in Midland, 2nd and 4th Tuesday at the Real Can. Superstore in Wasaga beach. All meetings are from 7:00 p.m. to 9:00 p.m. Contact: Pres. Horst Bolik 705-429-4061.

CREDIT VALLEY PHILATELIC SOCIETY - MISSISSAUGA

Chapter 67 of The RPSC meets on the 1st and 3rd Wednesday of each month from September to April, 7 to 9 p.m. at Christ Church United, 1700 Mazo Crescent - one block east of Clarkson Rd. and one block north of Truscott. Contact Bob Laker (905) 608-9794.

DELTA STAMP CLUB

Club meetings on the 2nd and 4th Tues. Sept. to May at 7:30 p.m. at the Beach Grove Elementary School, 5955 17A Ave., Tsawwassen, BC. Contact Keith Meyer, President, #7-1100-56th St. Delta, BC V4L 2N2.

EAST TORONTO STAMP CLUB

Chapter 12 meets the 1st and 3rd Wed., except June to Aug., at Stan Wadlow Clubhouse, Cedarvale Ave. Contact: Sec. Raymond Reakes, 188 Woodmount Ave., Toronto, ON M4C 3Z4. (416) 425-1545.

EDMONTON STAMP CLUB

Edmonton's Chapter 6 meetings held every other Mon., Sept. to June at 7 p.m., at St. Joseph High School cafeteria (use north entrance), 10830-109 St. Contact: Box 399, Edmonton, AB, T5J 2J6. Keith Spencer (780) 437-1787 or e-mail ameech@telusplanet.net.

ESSEX COUNTY STAMP CLUB

Chapter 154 meets on the 1st and 3rd Wednesday of the month (except no second meeting in July, August and December), at 7:00 p.m. at 5050 Howard Ave, Windsor, ON. Contact: David L. Newman, President, at 1165 Wigle Ave, Windsor, ON, N9C 3M9. Tel.: (519) 977-5967. E-mail: lacumo@cogeco.ca.

FENELON STAMP CLUB

The club meets on the second monday of each month at 7:30 p.m. at Fenelon Falls Baptist Church on Colbourne Street in Fenelon Falls. For more information, contact President, Lloyd McEwan, 705-324-7577, 212 Mary St. W., Lindsay, ON K9V 2N8.

FRASER VALLEY PHILATELIC CLUB

Meets at 7 p.m. on the 3rd Monday, except holidays, at Abbotsford Senior Secondary School, 2329 Crescent Way. Contact N. Holden at (604) 859-9103.

FREDERICTON DISTRICT STAMP CLUB

Chapter 148 meets the 1st and 3rd Tues, Sept. to May at 7:30 p.m. at the Hugh John Fleming Forestry Centre, 1350 Regent St. Contact Ron Smith, 12 Chateau Dr., McLeod Hill, NB, E3A 5X2, (506) 453-1792, e-mail: rsmith0225@rogers.com

FUNDY STAMP COLLECTOR'S CLUB

Meets the 1st Thurs, except July and August, at 7 PM at the CN Pensioners Centre, 1 Curry Street. Contact Mike Leighton at (506) 389-8083 or PO Box 302, Moncton, NB E1C 8L4

GREATER VICTORIA PHILATELIC SOCIETY

Chapter 32 meets on the 3rd Fri. at 7:30 p.m. at the Windsor Park Pavilion in Oak Bay. Circuit books, auction and special programs prevail. Contact Don Dundee, 928 Claremont Ave., Victoria, BC V8Y 1K3, (604) 658-8458.

HAMILTON STAMP CLUB

Chapter 51 meets at 6 p.m. on the 2nd, 4th and 5th Mon., Sept. to June except holidays, and 2nd Mon. of July, at Bishop Ryan secondary school, Quigley Rd. and Albright St. Contact: Clare Maitland (Secretary), Box 60510, 673 Upper James St., Hamilton, ON, L9C 7N7; e-mail: stamps@hwcn.org or online at www.hwcn.org/~ip029

INSURANCE AND BANKING PHILATELIC SOCIETY OF GREAT BRITAIN - CANADIAN BRANCH

Chapter 82 meets on the third Thursday of most months at the premises of DEPAG Agency, 14th floor, 67 Yonge Street, Toronto. Some meetings may be held at other venues as required. Contact Joe Janthur, President, at 416-364-4112.

KAWARtha STAMP CLUB

The Kawartha Stamp Club, meets on the second and fourth Tuesday of every month (except July and August) at 6:30 p.m. at the Immanuel Alliance Church, 1600 Sherbrook Street West, Peterborough, ON K9J 6X4. Contact Marie Olver at 705-745-4993 for more info.

KELOWNA & DISTRICT STAMP CLUB

Chapter 90 meets on the 1st Wed. Sept. to June at 7 p.m. at the Odd Fellows Hall, 2597 Richter St., Kelowna, BC. Contact: Kelowna Stamp Club, PO Box 24081, Town Centre P.O., Kelowna, BC V1Y 9H2.

KENT COUNTY STAMP CLUB

Chapter 7 meets 4th Wed. except July, Aug. and Dec. in the library of John McGregor Secondary School, 300 Cecile, Chatham, ON, at 7:30 p.m. Contact: Secretary, Allan Burk, 43 Sudbury Dr., Chatham, ON N7L 2K1.

KINCARDINE STAMP CLUB

Chapter 196 meets the 1st Wednesday of the month in the back of the Anglican Church on Russell Street at 7:00 p.m. Contact President John Cortan 519-395-5817 or Secretary Andrew Lunshof 519-396-5910. Club mailing address is 677 Hunter Street, Kincardine, ON N2Z 1S6 or e-mail: carm@bmts.com.

KINGSTON STAMP CLUB

Meets 7-9 p.m. on the 2nd and 4th Mon. Sept. to May at the Ongwanada Resource Centre, 191 Portsmouth Ave. Free parking and wheelchair access. Consignment table, auctions, bourse, OXFAM, and trading. Contact Richard Weigand, 218 Richmond Street, RR#1, Bath, ON K0H 1G0, e-mail: rweigand@kos.net.

KITCHENER-WATERLOO PHILATELIC SOCIETY

Chapter 13 meets the 2nd Thurs. Sept. to June at Albert McCormick Arena, Parkside Dr., Waterloo. Contact: James Oliver, P.O. Box 43007, Eastwood Square PO, Kitchener, ON N2H 6S9, (519) 893-4092.

LAKEHEAD STAMP CLUB

Chapter 33 meets the 2nd Wed. and last Fri. Sept. to June at the Herb Carroll Centre, 1100 Lincoln St., Thunder Bay, ON. at 7:30 p.m. Contact: Secretary D. Lein, 232 Dease St., Thunder Bay, ON P7C 2H8.

chapter MEETINGS RÉUNIONS des clubs membres



LAKESHORE STAMP CLUB – CLUB PHILATÉLIQUE DE LAKESHORE

Chapter 84 meets at St. John the Baptist Church, 233 Ste-Claire Street in Pointe-Claire, on the 2nd and 4th Thurs. Sept. to June at 7:30 p.m. Contact: François Brisse, President, PO Box 1, Pointe Claire/Dorval, QC, H9R 4N5. / Le chapitre 84, se réunit tous les jeudis du début septembre à fin juin, à 19h30. Les réunions ont lieu à l'Église St. John the Baptist, 233 rue Ste-Claire à Pointe-Claire. Information: François Brisse, Président, Case Postale 1, Pointe Claire/Dorval, QC, H9R 4N5.

LETHBRIDGE PHILATELIC SOCIETY

Chapter 57, The Lethbridge Philatelic Society, meets on the second Thursday of the month (except June, July or August) at 7 p.m. in the community room of Save on Foods, 1112 2nd Ave N, Lethbridge, AB

MEDICINE HAT COIN & STAMP CLUB

Chapter 146 meets the 2nd and 4th Tues. at 7:30 p.m. at the Volunteer Centre (Redi Enterprises Bldg) 856 Allowance Ave. S.E. Contact: Rudy Hartman, 22 Park Meadows Dr. S.E., Ste. 104, Medicine Hat, AB T1B 4E8.

MIDDLESEX STAMP CLUB

Chapter 204 meets every other Fri. Sept. to May, at 7 p.m. in the basement of St. Martin's Church, 46 Cathcart St., London. Meeting at 8 p.m. Contact Patrick Delmore at (519) 675-0779.

MILTON STAMP CLUB

Chapter 180 meets on the last Mon., except Dec. at 7 p.m. at Hugh Foster Hall (beside Town Hall) in Milton, ON. Silent auction every meeting. Contact: Milton Stamp Club, 425 Valleyview Cres., Milton, ON L9T 3K9; (905) 878-1533, or e-mail: alman@globalserve.net.

MUSKOKA STAMP CLUB

Meets the first Wednesday of each month at Bracebridge Public School, 90 McMurray Street, Bracebridge, ON. (Location for July & August will vary). Contact Tom Anderson (President) 7 Sadtler Drive, Bracebridge ON P1L 1K4; (705) 645-3330; e-mail eltomander@sympatico.ca

NELSON STAMP CLUB

Meets on the 3rd Thurs. except Dec. at 7 p.m. at #105-402 W. Beasley, Nelson, BC V1L 5Y4.

NORTH BAY & DISTRICT STAMP CLUB

The North Bay & District Stamp Club meets every second and fourth Wednesday of the month, September to May, at Empire Living Centre, 425 Fraser Street, North Bay at 6:30 p.m. Visitors are always welcome. Contact person: Ms. Terry Turner, tel. (705) 472-6918, e-mail: teron@sympatico.ca.

NORTH TORONTO STAMP CLUB

Chapter 5 meets on the 2nd and 4th Thursday of the month from January to June and from September to November. Meetings are held at Yorkminster Park Baptist Church, 1585 Yonge Street, one block north of St. Clair Avenue. Stamp sales circuit opens at 6:30 p.m. and meetings start at 8:00 p.m. Contact Herb Letsche, tel: (416) 445-7720, fax: (416) 444-1273, or e-mail: ntstampclub@yahoo.ca.

NORTH YORK PHILATELIC SOCIETY

Chapter 21 meets on the 1st and 3rd Wednesdays of each month from September to the 1st Wednesday in June, and on the 3rd Wednesday of July and August. Meetings are held from 6:30 p.m. to 9:00 p.m. in the Skaters' Lounge at the Carnegie Centennial Arena, 580 Finch Avenue West (1 1/2 blocks west of Bathurst), Toronto, Ontario. Meetings feature a convivial atmosphere, speakers, auctions, a sales circuit, and a number of dealer members. Membership is only \$10 per year. Ample parking is free. For more information, contact Art Halpert, tel. 416-643-2020 (days), 416-499-4406 (evenings/weekends), e-mail ahalpert@sympatico.ca

NOVA SCOTIA STAMP CLUB

We invite you to join us at a monthly meeting on the second Tuesday of the month at 7:30 pm in the auditorium - lower level (except July & August). Nova Scotia Museum of Natural History, 1747 Summer St., Halifax, NS B3H 3A6, www.nsstampclub.ca.

OAKVILLE STAMP CLUB

Chapter 135 meets on the 4th Tuesday of the month at 7 p.m. in the cafeteria, St. Thomas Aquinas Secondary School, corner of Rebecca Street and Dorval Drive. Contact: Oakville Stamp Club, c/o Kenneth O'Connor, Secretary. Telephone (905) 469-6445.

OTTAWA PHILATELIC SOCIETY

Chapter 16 meets every Thursday at 7:30pm, September to June at the Hintonburg Community Centre, 1064 Wellington Street, Ottawa, Ontario. Contact: Jack Gray, President. E-mail exoc@sympatico.ca. 3 Leonard Ave., Ottawa, ON K1S 4T6.

OWEN SOUND STAMP CLUB

Chapter 191 meets the 3rd Wed. at 7 p.m. at St. George's Anglican Church, 149 4th Ave. E. Trading, auctions, circuit books. Contact Robert J. Ford, 721 8th Ave. E., Owen Sound, ON N4K 3A4.

OXFORD PHILATELIC SOCIETY:

Chapter 65 meets on the 2nd and 4th Wednesday of the month, September to May, at South Gate Centre, 191 Old Wellington Street South, Woodstock, Ontario at 7:00 p.m. Trading at 7:30 p.m. Program with speakers, mini auctions, dealers, contact with prizes and draws for all ages. Contact: Gib Stephens, P.O. Box 20113, Woodstock, ON N4S 8X8.

PENTICTON AND DISTRICT STAMP CLUB

Chapter 127 meets the 1st Sunday of each month, from Sept. to May, from 2-4 p.m. at the Penticton Library Auditorium, 785 Main St. Contact: Gordon Houston (Secretary), 298 Cambie Street, Penticton, BC V2A 4G8, e-mail: gordandlou@shaw.ca.

PERTH STAMP CLUB

Meets the 2nd and 4th Wed. Sept. to June, 7:30 p.m. in McMartin House, Gore Street. Contact Gus Quattrocchi (A.J.), 69 Harvey St., Perth, ON K7H 1X1.

R.A. STAMP CLUB – OTTAWA

Chapter 41 meets every Mon., except June to Aug. at 7:30 p.m. at the R.A. Centre, 2451 Riverside Dr., Ottawa, ON K1H 7X7. Contact: (613) 733-5100.

REGINA PHILATELIC CLUB

Chapter 10 meets the 1st and 3rd Wed., Sept. to May, 7-10 p.m. at Sheldon-Williams Collegiate Library, 2601 Coronation St., Contact: Box 1891, Regina, SK S4P 3E1.

ROYAL CITY STAMP CLUB

Chapter 104 meets on the 2nd Thurs. except July and Aug., 7 p.m. at the New Westminster Public Library, 716-6th Ave., New Westminster, BC. Contact: Box 145, Milner, BC V0X 1T0. (604) 534-1884.

SAINT JOHN STAMP CLUB

Saint John Stamp Club meets at 7:00 pm the fourth Wednesday of each month, except July and August, at the Atlantic Superstore, Millidgeville. Visitors and new members welcome. Please call 849-2250 for more information

ST. CATHARINES STAMP CLUB

Meets on the 1st and 3rd Tues. Sept. to June at Holy Cross secondary, St. Catharines, ON. Contact: Stuart Keeley, 15 Baxter Cres., Thorold, ON L2V 4S1, (905) 227-9251, stuart.keeley@sympatico.ca

ST. JOHN'S PHILATELIC SOCIETY

Meets 2nd and 4th Wed., except July and Aug. at 8 p.m. at Marine Institute. Contact: Michael Deal, 107 Springdale St., St. John's, NL A1C 5B7. Tel: (709)754-2807. E-mail: mdeal@mun.ca

SARNIA STAMP CLUB

Chapter 45 meets on the 4th Sunday of the month, September through June, with the exception of December which is held on the 2nd. Sunday. Meetings are held at the Kinsmen Club of Sarnia at 656 Lakeshore Road in Sarnia, Ontario, from 2:00 p.m. to 4:00 p.m. Activities include circuit books, silent auction, and dealers. Contact: Doug Fox at 1849 LaSalle Line, RR4, Sarnia, ON N7T 7H5. Telephone: (519) 332-0378.

SASKATOON STAMP CLUB

Chapter 80 meets the 2nd and 4th Mon. Sept. to May, 7-9 p.m. at the Saskatoon Public Library - Rusty McDonald Branch, 225 Primrose Dr., Saskatoon, SK S7K 5E4. Contact: secretary: Doug Smith, (306) 249-3092; e-mail: douglasmichaelsmith@shaw.ca.

Saugeen Stamp Club

Meets on the 1st Tues. at the Hanover Library Complex, 451 10th Ave., Hanover, ON. Contact: Bill Findlay, President, PO Box 1518, Durham, ON N0G 1R0, E-mail billfindlay@bmts.com, or Joanne Vogel, Vice-president, Box 663, Chesley, ON N0G 1L0, E-mail jimmyjo@bmts.com.

SCARBOROUGH STAMP CLUB

Chapter 223 meets the 1st and 3rd Tues. Sept. to June at 7 p.m. at Cedarbrook Community Centre, Contact Don Beaumont, 22 Gregson Street, Ajax, ON L1T 3Z9.

SIDNEY STAMP CLUB (SIDNEY, BC)

The Sidney Stamp Club meets the 2nd Sat. except July and Aug., at the Sidney Regional Library, Nell Horth Room, at 2 p.m. Sales circuit, presentations, and auctions. Contact: (250) 479-6513.

LA SOCIÉTÉ PHILATÉLIQUE DE QUÉBEC

La S. P. Q. tient ses réunions régulières les premiers et troisièmes mercredis du mois au sous-sol de l'église St-Rodrigue, 4760 1ère Avenue, porte 10 à Québec. Les réunions ont lieu de 19 h à 22 h du troisième mercredi de septembre au premier mercredi de juin. Information: écrire a SFQ, CP 70076, succ Québec-Centre, Québec, QC G2J A01. Courriel: jp.forest@videotron.ca, site Web: www.s-p-q.org.

LA SOCIÉTÉ PHILATÉLIQUE DE LA RIVE SU

Société membre No. 19. Réunions régulières tenues les 2e et 4e lundis débutant en septembre pour se terminer le 2e lundi de juin. De 19h30 à 21h00. Centre culturel, 100 ouest, rue St-Laurent, Longueuil, QC. Secrétaire Bernard Dansereau.

STRATFORD STAMP CLUB

Chapter 92 The Stratford Stamp Club meets on the 4th Thursday from September to June (except December when it meets on the 3rd Thursday), 7pm at the Stratford Kiwanis Community Centre, 111 Lakeside Drive, Stratford, Ontario. There is something of interest for all ages from beginner to the advance collector. Visitors are always welcome. For information please send inquiries to the following address: Stratford Stamp Club, Suite 273, 356 Ontario Street, Stratford, ON N5A 7X6, or contact William Gard 1-519-272-2842

SUDBURY STAMP CLUB

Chapter 85 meets on the 2nd Tuesday of the month, September through June at 7:00 p.m. Meetings are held at the Delki Dozzi Playground Fieldhouse. Slides, presentations, auction. Contact: Wm "Biff" Pilon at P.O. Box 2211, Station A, Sudbury, Ontario, P3A 4S1. E-mail: biffandbetty@sympatico.ca

THE PHILATELIC CLUB OF MONTRÉAL

Chapter 122 meets monthly from September to June, at 7:30 p.m. at the Westmount Library, 4574 Sherbrooke St. W, Montreal. Contact: 25 Levasseur, St. Constant, QC J5A 1M9. Telephone: 514-735-3941; E-mail: Islaven@sympatico.ca.

TORONTO HARMONIE STAMP CLUB

Chapter 94 meets on the first Monday of the month, except July and August, at 7:30 p.m. in a member's house. New members or visitors are always welcome. For further information, contact Jake Doehler, 6 Monmouth Court, Scarborough, ON M1H 2T5. Tel: 416-438-4862, e-mail: bimlidoehler@hotmail.com.

TRURO PHILATELIC SOCIETY

Meets the 2nd Thurs. Sept. to June at 7:30 p.m. at the Sobey's community room, Prince St., for a general meeting followed by a program and auction. Fourth Thurs is trading night.

L'UNION DES PHILATÉLISTES DE MONTRÉAL

Le chapitre no. 3 de la Société se réunit à 19 h 00 tous les 2es et 4es mardis de septembre à juin au 7355, boulevard Christophe-Colomb, Montréal, QC, H2R 2S5. Visiteurs bienvenus. / Chapter 3 meets at 7:00 p.m. on the 2nd and 4th Tues. from September to June at 7355 Christopher Columbus Boulevard, Montreal, QC, H2R 2S5. Visitors welcome.

VANCOUVER ISLAND PHILATELIC SOCIETY

Chapter 52, meets at 7:30 p.m. on the 4th Thurs. at St. Aidan's Church Hall, 3707 St. Aidan's St., Victoria, BC. Contact R. Clarke, Sec., Vancouver Island Philatelic Society, 205 - 651 Jolly Pl, Victoria, BC, V8Z 6R9.

WEST TORONTO STAMP CLUB

Chapter 14 meets 2nd, 3rd and 4th Tues. except July and Aug., 7:30 p.m. at Fairfield Seniors' Centre, 80 Lothian Ave., Etobicoke, Auctions, dealers, speakers, study group, annual exhibition. Contact: 331 Rathburn Rd., Etobicoke, ON M9B 2L9. Frank Alusio, (416) 621-8232.

WINNIPEG PHILATELIC SOCIETY

Meets at 7 p.m. on the 1st and 3rd Thurs. except July and Aug. Deaf Centre of Manitoba, Meeting Room, 285 Pembina Hwy. Contact: Rick Penko, 3793 Vialoux Dr., Winnipeg, MB R3R 0A5, e-mail: rpenko@shaw.ca.

coming EVENTS CALENDRIER

To have your event listed in this section of *The Canadian Philatelist*, please send all details to The RPSC National Office, P.O. Box 929, Station Q, Toronto, ON M4T 2P1. Details may be faxed to 1-888-285-4143 or e-mail to info@rpsc.org. Information will not be accepted by telephone. THIS IS A FREE SERVICE OF THE RPSC.

Pour que votre événement soit listé dans cette section du *Philatéliste canadien* veuillez envoyer tous les détails au Bureau national de la SRPC, C.P. 929, Succ. 'Q', Toronto, ON M4T 2P1. Les détails peuvent être faxés au 1-888-285-4143 ou par poste-électronique à info@rpsc.org. Aucune information ne sera acceptée par téléphone. CECI EST UN SERVICE GRATUIT DE LA SRPC.

REGIONAL EVENTS / ÉVÉNEMENTS RÉGIONAUX

JANUARY 12 JANVIER, 2008:

BRANTFORD STAMP CLUB SHOW will be held from 10 am to 4 pm at the Woodman Community Centre, 491 Grey Street at James Avenue, east of Wayne Gretsky Highway. Exhibits, 15 dealers, sales circuit, lunchroom, draws, Canada Post and show cancel. For information contact D. Lanyi at (519) 752-3868 or at shasland@kwic.com.

MARCH 1 MARS, 2008

WINPEX 2008, Windsor, Ontario. 15 dealers, exhibits, free admission/parking, door prizes. Saturday, 10-5. Forest Glade Arena, 3205 Forest Glade Dr., Windsor, Ont. For additional information contact: Contact: David Newman lacumo@cogeco.ca

MARCH 8 MARS, 2008:

The Oakville Stamp Club's 45th Annual Show will be held from 9:30 am to 4:00 pm at St. Paul's United Church, 454 Rebecca Street, Oakville. Featuring 16 dealers, 3 table auctions, Hamilton and Oakville circuit books, and free parking. Breakfast and lunch available. Information from Bernd Duddeck at (905) 845-2326 or bpduddeck@cogeco.ca.

MARCH 29 MARS, 2008:

KAPEX 2008 will be held 9:30 am to 4:30 pm at the Evinrude Centre, 911 Monaghan Road, (just north of Lansdowne Street) Peterborough. Featuring exhibits, dealers, door prizes, children's prizes, club sales and auction. Free admission and plenty of parking. Information from Rick Stankiewicz at (705) 295-6158 or stankiewiczr@nexcicom.net

APRIL 11-13 AVRIL, 2008:

The CSDA's National Postage Stamp Marketplace and North Toronto Stamp Club's 65th Annual Exhibition will be held at the Queen Elizabeth Building, Exhibition Place, Toronto. Exhibits and dealers from Canada, UK and USA. Info from secretary@csdaonline.com or Geoff Ewing of the North Toronto Stamp Club at (416) 653-3954 or geoffewing@sympatico.ca

APRIL 19 AVRIL, 2008:

Stampfest, the Kitchener-Waterloo Philatelic Society annual show and bourse will be held at the Community Christian Reformed Church 1275 Bleams Road, at Fischer-Hallman Road, Kitchener, Ontario. Hours: 10 a.m. to 4 p.m. Featuring an exciting dealer bourse, competitive exhibits, including one-page entries, free parking, free admission, hourly and special draws, stamp pull, lunch counter, and other surprises. For additional information phone Jim Oliver at 1-519-893-4092 or e-mail: jimoliver10@hotmail.com.

OCTOBER 17-19 OCTOBRE, 2008:

STAMPDEX '08 will be held at the Queen Elizabeth Building Exhibition Place, Toronto. Exhibits and dealers from Canada, UK and USA. Info from secretary@csdaonline.com

NATIONAL EXHIBITIONS / EXPOSITIONS NATIONALES

JANUARY 11-13 JANVIER, 2008:

AmeriStamp Expo 2008, the annual APS winter show and convention will be held at the Charlotte Convention Center, Charlotte, North Carolina. Information from Dana Guyer (814) 993-3803 ext. 207 or dana@stamps.org

MARCH 28-30 MARS, 2008:

The Edmonton Spring National Stamp Show 2008 will be held in the West Edmonton Mall Fantasyland Conference Centre, 3rd floor Europa Boulevard rooms 5, 6, 15,16. Hours: Friday Noon - 6 pm, Saturday 10 am to 5 pm, Sunday 10 am - 4 pm. Exhibits, dealers, youth stamp room, circuit books, seminars, auction and banquet. For information contact Keith Spencer at (780) 437-1787 or at keithr.spencer@shaw.ca.

MAY 3-4 MAI, 2008:

ORAPEX 2008, Ottawa's National Stamp Show, the 47th Annual Stamp Exhibition and Bourse with over 40 dealers and 150 frames of exhibits, will be held at the RA Centre Curling Rink, Saturday May 3, 10 am to 6 pm, and Sunday May 4, 10 am to 4 pm. The address is RA Centre, 2451 Riverside Drive, Ottawa, ON. Those wishing to exhibit should contact Tom Hare at thare@sutton.com. For bourse information please contact Stéphane Cloutier at cloutier1967@sympatico.ca. FREE admission and parking. Dick Malott, Publicity Officer at (613) 829-0280 or rmalott@magma.ca.

MAY 16-18 MAI, 2008:

ROYAL *2008* ROYALE: The Royal Philatelic Society of Canada's 80th Annual Exhibition and Convention will be held in Ste. Foy, Québec. Details to follow. Dates and locations for forthcoming years: 2009, St. Catharines, Ontario. 2010, Windsor, Ontario. 2011, Montréal, Québec.

AUGUST 29-31 AOÛT, 2008:

BNAPEX+2008+NOVAPEX, the annual Convention of the British North America Philatelic Society, in Halifax, The host facility is The Lord Nelson Hotel, 1515 South Park Street, Halifax, NS B3J 2L2. General information may be obtained from Jack Forbes, (JAFRBS@aol.com) or Michael Peach (michael.peach@ns.sympatico.ca), Dealer contact is Claude Michaud (jcm.ph@ns.sympatico.ca) and the Exhibits Chair is Gary Steele (gary.steele@ns.sympatico.ca). The Convention is being held in conjunction with the Annual Exhibition of the Nova Scotia Stamp Club

MARCH 20-22, MARS, 2009:

The Edmonton Spring National Stamp Show 2009. Details to follow at a later date.

MAY 2-3 MAI, 2009:

ORAPEX 2009, Ottawa. Details to follow at a later date.

MAY 1-2 MAI, 2010:

ORAPEX 2010, Ottawa. Details to follow at a later date.

INTERNATIONAL EXHIBITIONS / EXPOSITIONS INTERNATIONALES

MAY 14-18 MAI, 2008:

Tel Aviv Israel. WORLD STAMP CHAMPIONSHIP "ISRAEL 2008" under F.I.P. patronage will include all 10 F.I.P. philatelic competitive classes, as well as World Stamp Championship competition. Israel Trade Fairs & Convention Center, Tel Aviv. Commissioner: Dr. Jan J. Danielski, 71 Gennela Square, Toronto, ON M1B 5M7. Tel: (416) 283-2047, e-mail: jjad@rogers.com.

JUNE 20-28 JUIN, 2008:

Bucharest Romania. EFIRO 2008 World Philatelic Exhibition under F.I.P. Auspices. Commissioner: Charles J. G. Verge FRPSC, FRPSL, PO Box 66, Stn "Q", Toronto, ON M4T 2L7. Tel: (647) 344-0446 and E-mail cjgverge@rogers.com

SEPTEMBER 12-14 SEPTEMBRE, 2008:

Prague, Czech Republic, PRAGA 2008 World Philatelic Exhibition, covering FIP Classes of Traditional Philately, Postal History, Philatelic Literature and the experimental class of One Frame Exhibits. Commissioner John McEntyre, 707-3495 Mountain Street, Montreal, QC, H3G 2A5. Tel: (514) 845-2938. E-mail: jgmcentyre@hotmail.com.

MAY 8-15 MAI, 2010:

London 2010 Festival of Stamps will be held at the Business Design Centre, Upper Street, Islington, London N1. Details at www.london2010.org.uk. Canadian commissioner: Dr. Jan J. Danielski, 71 Gennela Square, Toronto, ON M1B 5M7. Tel: (416) 283-2047, e-mail: jjad@rogers.com.

OCTOBER 1-10 OCTOBRE, 2010:

PORTUGAL 2010, Parque das Nações, Lisbon, Portugal. Commissioner Charles J. G. Verge FRPSC, FRPSL, PO Box 66, Stn "Q", Toronto, ON M4T 2L7. Tel: (647) 344-0446 and E-mail cjgverge@rogers.com.

Have you booked
your travel tickets and
hotel reservations for
ROYAL *2008* ROYALE?

Avez-vous réservé
vos billets et votre
chambre d'hotel pour
ROYAL *2008* ROYALE?

SELL QUALITY SELLS

ROYAL PHILATELIC SOCIETY OF CANADA SALES CIRCUITS

Most Requested Sales Circuit Books:

- Canada - All
- Australia
- Commonwealth - Victoria
- France
- Germany, colonies, states, occupations DDR etc
- New Zealand u

COUNTRIES AVAILABLE

- British Commonwealth
- Canada , Germany - all precancels, Japan mod u coils, plate blocks
- Balkans
- Central & S. America
- Europe
- Hong Kong
- Malaysia & States
- Turkey
- USA

We'll send a world of stamps to your door.



See us at the shows

February 16-17, 2008, **Regina**, Seven Oaks Inn, Regina Philatelic Society

March 14- 16 , **Edmonton**, West Edmonton Mall- Edmonton Stamp Club

Beat Ol' Man Winter!

Try buying or selling through the RPSC Circuits!

We have a wide variety of material . . . from Thailand to Turkey, Caicos & Caymans to Canada. We are ALWAYS seeking quality material from the world.

I wish you a Happy New Year, Bonne Année , Fröhliche Weihnachten.

Special thanks to all the Chapter reps and to Doug Sephton who creates the ads, and Cartoonist Peter Lynde.



Shop at home

Let us bring the world to you.

Want to buy stamps at reasonable prices?

Write, phone, fax or e-mail today, for a complete information package on how to buy or how to sell through the **RPSC Sales Circuits**. RPSC members only

Independently owned and operated by: R. Dwayne **Miner**, Owner, and **Sandra E. Foss**, Circuit manager

**Box 1109
Cochrane, AB T4C 1B2
Canada**

**Phone: (403) 932-2947
Fax: (403) 932-2947
E-mail: rpscsale@telus.net**





By Yvan Latulippe

In this issue we have included a condensed file on financing a youth stamp club. Soon it will be 2008 and we have prepared it for the January issue to give you enough time to prepare and take the necessary steps to start you off for the next "stamping" season.

You will see some changes in this column in the near future. For instance, we have begun to index all the Youthphil clubs, from coast to coast, so it will be easier to contact one another. This month's philatelic tips will also be useful with the next issue's article: what to do with surplus stamps.

January also means we need to rush to get our exhibits ready for the end-of-season shows. You can check in *The Canadian Philatelist* if there are any in your area. Also, don't hesitate to send us news about your club's activities.

Condensed File: Financing Our Activities

- Membership fees should be the basic source of financing for the regular needs of the club.
- The club's regular activities can also help with finances as follows:

Organize an auction with donated stamps or with the participation of your members (the club will pick up a small percentage of the selling price – about 5 percent).

Mount your duplicate stamps in 5¢ or 10¢ books, or let your members mount their own. Just charge them some reasonable amount for the books.

For your door prizes, organize a 50/50 draw. Check your applicable provincial gambling laws first.

- You can set up some special fundraising activity (usually for a specific project like a trip to an exhibition or a visit to a dealer). Think about items that can be sold: chocolate bars, candies, Christmas cards, wrapping paper, toothbrushes, soap, and so on. You must call your municipality authorities



par Yvan Latulippe

Déjà 2008. Dans ce numéro, un condensé spécial sur le financement d'un club philatélique. En le faisant en janvier, vous aurez le temps de vous préparer et de faire les démarches nécessaires pour le début de la prochaine saison.

Tranquillement, vous verrez cet article se transformer. Nous avons commencé à répertorier les clubs jeunesse partout au pays. Nous pourrions ainsi plus facilement communiquer entre nous. Le truc de ce mois-ci vous servira pour le thème du prochain numéro : quoi faire avec ses pétards?

Janvier signifie aussi le début de la préparation intensive aux expositions de fin d'année. Vous pouvez vérifier dans le CP si une exposition se tient dans votre région. N'hésitez pas à nous donner des nouvelles.

Dossier : Le Financement

- Les cotisations des membres devraient représenter la base de votre financement et suffire pour les besoins courants de votre club.
- Les activités régulières du club peuvent devenir une autre source d'entrée de fonds pour votre club :

préparer un encan avec les cadeaux reçus ou des lots des membres sur la vente desquels le club percevra un pourcentage (5%).

cahiers de timbres à 0,10\$ ou à 0,05\$. Vous pouvez vous servir des doubles du club ou même permettre aux membres de monter leur propres cahiers. Chargez quelques dollars pour le cahier.

lors du tirage des prix de présence, organisez un 50 / 50. Vérifiez les lois en vigueur dans votre province pour les tirages.

- Les activités spéciales de financement devraient être utilisées pour des projets spéciaux, comme un voyage ou un déplacement pour visiter une exposition ou des marchands. On pense à la vente de produits : chocolats, cartes de Noël, papier d'emballage, brosse à dent, savon, bonbons, etc. Vous devez vous informer à votre municipalité pour obtenir l'autorisation de vendre ces produits de porte à porte. On pense à l'organisation d'un repas : spaghetti ou hot-dogs,

PHILTIP

Never throw away a stamp: not even the ugliest. In the March/ April issue, we will give you some ideas on how to use them.

TRUC PHILATÉLIQUE

Ne jamais jeter un timbre. Même un pétard. Dans le numéro de mars/avril nous vous donnerons quelques suggestions pour utiliser ces « déchets ».



to get the needed license for selling door to door. Think about a supper as a fundraiser. Spaghetti and hot-dogs are best. At the Youthphil club we also think about services such as wrapping at grocery stores or harvest items such as fruits or vegetables. In each case, you will need to get applicable licenses for all your planned activities.

- Sponsors can donate gifts or even money. Canada Post is one sponsor that comes to mind. Heritage Canada may fund some programs. Then there are philatelic supply dealers, stamp dealers, businesses that target teenagers as customers, and even adult philatelic clubs.
- Finally, don't forget that you might get help from your school board, library, municipality, or some provincial agencies.

And how about you? Have you tried something special that was successful? Let us know. Share your good ideas. We will return to that subject in the September/October issue. Our address remains the same.

Have a good start in 2008! ☒

c'est ce qui est le plus payant. On pense à des activités extérieures comme l'emballage dans les épicerie, la cueillette de fruits ou de légumes. Dans chaque cas, vous devez soit vous procurer les permis nécessaires soit vous entendre sur les conditions dans lesquelles l'activité se déroulera.

- Les commanditaires peuvent vous fournir certains cadeaux ou certaines sommes d'argent. Pensez à Postes Canada, à Héritage Canada (certains programmes), aux compagnies de fournitures philatéliques, aux marchands de timbres, aux compagnies qui ciblent les ados comme clientèle, même aux clubs philatéliques adultes.
- Finalement, n'oubliez pas que vous pouvez également recevoir une aide de certains organismes qui vous permettront d'économiser des sous et d'éviter certaines dépenses. Contactez votre commission scolaire, les bibliothèques, les organismes municipaux de loisirs, et même certains ministères provinciaux (loisirs, éducation)

Et vous, avez-vous essayé autre chose? Faites-le nous savoir. Partagez vos bonnes idées. Nous effectuerons un retour sur ce sujet pour le numéro de septembre/octobre prochain. Les coordonnées sont toujours les mêmes.

Bon début d'année à tous ☒

CLASSIFIED ADVERTISING ORDER FORM / BON DE COMMANDE-ANNONCES CLASSÉES

RATES: 10 cents per word; minimum charge \$3.00 per insertion. Boxed Classified \$12.00/column-inch. Please indicate desired heading. **Classified ads must be paid in advance.**

C.P. Classified Ads
103 LAKESHORE RD. SUITE 202,
ST. CATHARINES, ON L2N 2T6

CALL Jim at
(905) 646-7744, ext 223
FAX (905) 646-0995 or
email: jims@trajan.com

TARIFS: 10 cents le mot; tarif minimal: 3\$ par insertion. Petites annonces encadrées: 12\$ par pouce de colonne. Prière d'indiquer la rubrique désirée. **Les petites annonces sont payables d'avance.**

Classification:

**ALL CLASSIFIED ADS MUST BE PREPAID.
TOUTES LES ANNONCES CLASSÉES DOIVENT
ÊTRE PAYÉES D'AVANCE.**

PLEASE CHECK ONE / PRIÈRE DE COCHER UNE CASE.

CHEQUE / CHÈQUE MONEY ORDER / MANDAT
make cheques payable to: / chèques payable à: Trajan Publishing



Card No. / no. de carte: _____

Exp. Date / date d'expiration: _____

Name / nom: _____

Signature: _____

Check your advertisement for accuracy of the first insertion. **CANADIAN PHILATELIST** cannot be responsible for the cost of more than one incorrect insertion.

Vérifiez l'exactitude de l'annonce à sa première insertion. **Le Philatéliste canadien** n'est responsable que du coût d'une seule insertion erronée.

COPY CHANGES NOT ALLOWED DURING LENGTH OF AD'S RUN /
AUCUN CHANGEMENT DE TEXTE N'EST AUTORISÉ PENDANT LA PARUTION
DE L'ANNONCE.

Abbreviations, initials and phone numbers count as one word. /
Les abréviations, initiales et numéros de téléphone comptent
pour un mot.

3	_____
6	_____
9	_____
12	_____
15	_____
18	_____
21	_____

OF ISSUES TO RUN IN / Parution dans:
numéros de la publication. _____

TOTAL # OF WORDS / Nombre de mots: _____

= TOTAL COST / Coût total \$ _____

All ads require name, address and phone number with order; they do not need to be used in your copy.

Pour commander, indiquez vos nom, adresse et no. de téléphone, qu'il n'est pas indispensable d'utiliser dans le texte de l'annonce.

classifieds annonces classées

CANADA FOR SALE /
CANADA À VENDRE

NEWFOUNDLAND Specialized Stamp Catalogue 2006 edition; color. Includes Colonies of: NB, PEI, NS, BC; Classic Canada to 1951. Sent as XpressPost in North America \$110 Canadian; Airmail Outside North America, \$125 Canadian; www.nfldstamps.com, (709-685-0560) 9 Guy Street, St. John's, Newfoundland, CANADA A1B 1P4 **v59n06**

FOR SALE / À VENDRE

BRITISH COMMONWEALTH, Newfoundland, Canada and Provinces, USA mint and used stamps. No taxes. No postal charges. Send for free lists. Reg's Stamps, Box 26129, Ottawa, ON K2H 9R6. Phone (613) 829-8156. **v59n04**

BRITISH COMMONWEALTH, Canada, Newfoundland, mint, used, cancels, postal history at reasonable prices. Request a free copy of my current colour illustrated price list. CSDA Honourary Life Member Richard Lamb, Box 573, Kitchener, ON N2G 4A2 **v59n02**

MAIL ORDER / COMMANDE PAR
CORRESPONDANCE

WIDEST CANADA, Australia, United States, Great Britain choices. FREE lists sent next day. We specialize, you fill the gaps. Robert Millman, 105-6655 Lynas Lane, Richmond, BC V7C 3K8. Phone (604) 241-1948, or fax (604) 594-4155. E-mail: rmillman@hotmail.com. **v58n06**

PUBLISHING / PUBLICATION

PAGE LAYOUT specialist available to give your print material a professional look. Many years experience in publishing industry, focusing on collectible hobbies. 10% discount for RPSC members. (905) 734-0641. **v59n02**

WANTED / RECHERCHÉ

I WOULD LIKE to find someone that would be interested in loaning or selling me an old Unitrade Specialized or Scott Specialized Stamp Catalogue for Canadian Stamps from the late 80's. If anyone has such a catalogue, please contact John Lawryk at jlawryk@yahoo.com. **v59n02**

SANTA LETTERS or envelopes with H0H 0H0 return address. Any era. Buy or trade. Tony 519-745-2973, e-mail: tshaman@roggers.com or Box 43103, Kitchener, ON N2H 6S9. **v59n03**

WHOLESALE / VENTE EN GROS

USED, MIXED, 1,000 Canada Commemoratives, net \$20. 1,000 small size regulars, net \$7. C.W.O., postpaid, free price list. Patrick Cangle, 733 Terrill, A-2, Sherbrooke, Quebec, Canada J1E 1L8. Tel 819-562-8345 **v59n02**



To place a classified advertisement, check out page 57 in this issue.

Pour placer une annonce voir la page 57 de ce magazine.

62%* OFF

...the Cover Price

SUBSCRIBE TODAY

Name: _____
E-mail: _____
Address: _____
City: _____ Prov.: _____
Postal Code: _____
Phone: _____

PAYMENT ENCLOSED VISA OR MASTERCARD

Card#: _____

Exp. Date: _____ Signature: _____

3 YRS (78 ISSUES)

My Cost*\$99.95
Cover Price.....\$269.10
SAVINGS.....\$169.15

2 YRS (52 ISSUES)

My Cost*\$69.95
Cover Price.....\$182.85
SAVINGS.....\$112.90

1 YR (26 ISSUES)

My Cost*\$39.95
Cover Price.....\$89.70
SAVINGS.....\$49.75

ATTENTION PHONE ORDERS CALL
1-800-408-0352

OR
SUBSCRIBE ONLINE!!
www.canadianstampnews.ca

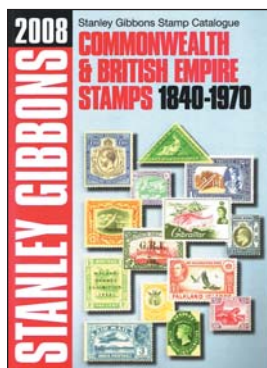
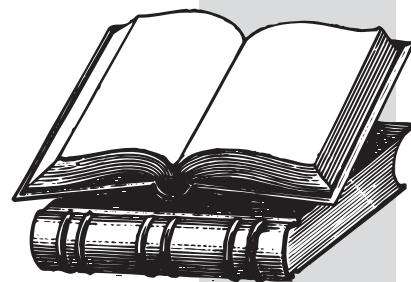
Send Payment to:
Canadian Stamp News, PO Box 28103,
Lakeport PO, 600 Ontario St.,
St. Catharines, ON, L2N 7P8

Rates for U.S. are the same as Cdn prices
International rate for 1 year only is \$159.00

*GST prices are included
NB, NS, NL - HST PRICES ARE AS FOLLOWS; 3YRS - \$107.57 • 2YRS - \$75.28 • 1YR - \$42.99

PLEASE ALLOW UP TO 4 WEEKS FOR DELIVERY OF YOUR FIRST ISSUE

BOOK REVIEWS OUVRAGES PARUS



STANLEY GIBBONS STAMP CATALOGUE COMMONWEALTH & BRITISH EMPIRE STAMPS 1840-1970

Published by Stanley Gibbons Publications. 2008 edition. ISBN 13:978-0-85259-653-1; ISBN 0-85259-653-7. Hard cover, 642 pages, 297 X 210 mm; retail price 69.95 British pounds. Orders can be placed by telephone: +44(0)1425-472363 or by e-mail: sales@stanleygibbons.co.uk Also available from the publisher at Unit 7 Parkside, Christchurch Road, Ringwood, Hampshire, BH24 3SH or from www.stanleygibbons.com

With the release of the 2008 edition of this ever-popular catalogue, its changeover to an all-colour publication is nearly complete. Only a few of the very early issues of some countries remain pictured in black and white. More importantly, this latest publication, the 110th edition, now encompasses the stamps of the British Empire from Great Britain's 1840 issues to 1970. Users familiar with previous editions will be aware that some earlier versions of the catalogue ceased with stamps released in 1952.

A number of the newly listed Queen Elizabeth II sets are shown in full, which has necessitated the addition of significantly more pages. The 642 pages in the current publication compare to 430 in the previous edition. It makes for a much weightier volume but the sturdy binding and hard covers are more than adequate to protect the pages for their useful lifetime, and probably longer.

Retail prices for the newly added stamp issues for the 1952 to 1970 period have been updated. Users of this newest edition will note some significant price increases for rarities and for many of the better quality items.

Most notable, besides the expanded use of colour for many of the earlier stamps, are the depictions of varieties not illustrated in earlier editions. Typical examples include the Barbados 1d. on 2d. value with double surcharge. Listed and priced also, for the first time, are the Indian stamps in use in Basra and Baghdad.

Also listed for the first time is Canada's 6-cent Small Queen, Montreal printing, (SG #86c) yellowish-brown, perf 12x12½. List price is £2,500 for a used copy. No mint copies are known to exist.

Why no mention is made of the doubts about the authenticity of the New Carlisle, Gaspé, Quebec, stamp imprint depicted on page 140 in the catalogue remains a mystery. The item continues to be described as a "Postmaster's Provisional Envelope" despite the fact that no authoritative philatelic

organization to date has authenticated this cover as genuine. A caveat to this effect by the editor would be useful, notwithstanding that there is little danger that collectors will be out of pocket by this listing as only one example is known to exist.

With the decision to extend the stamp listings from 1952 to 1970, editorial changes were required. Countries whose names were changed on gaining their independence are now listed alphabetically according to the name appearing on the stamp. For example, the listing of Virgin Islands stamps has been moved from the "V" section to the letter "B" section as these stamps by 1970 were inscribed British Virgin Islands rather than "Virgin Islands."

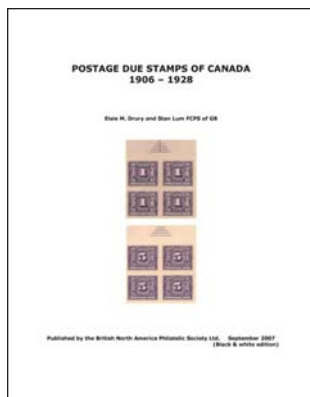
Included in the preface of this classic publication are topics such as the current state of the hobby, an overview of auction price realizations during the past year along with revisions that update data from previous editions. These topics provide users with the most up-to-date philatelic information available.

Readers will also find an illustrated listing of British Empire Omnibus Issues, a comprehensive Index, a Contents page, an eight-page spread of general philatelic information and guidelines to the scope of this work, a list of abbreviations found throughout the catalogue, an international philatelic glossary, a selected bibliography, and a one-page listing of specialist philatelic societies.

Much of the success of this catalogue is attributable to the detailed information provided by specialist societies from around the world.

Priced at £69.95 its cost can be easily justified when one considers that it catalogues the stamps of no fewer than 110 postal administrations. Its quality workmanship places this publication among the best that philatelic publishing has to offer. And, as such, we have no hesitation in recommending it to collectors of the stamps of the Commonwealth and the British Empire as well as to individuals contemplating an expansion of their philatelic horizons.

Tony Shaman



POSTAGE DUE STAMPS OF CANADA 1906 - 1928

By Stan Lum & Elsie Drury. Spiral Bound, 2007, 112 pages, 8.5 x 11 inches. ISBN: 978-1-897391-14-3 (b&w) \$32.95; 978-1-897391-13-6 (colour) \$82.00. Published by the British North America Philatelic Society (BNAPS). Credit card orders (Visa, Mastercard) will be billed for exact amount of shipping plus \$2 per order. For payment by cheque or money order add 10% in Canada, 15% to the US, 20% overseas. GST is payable for Canadian orders. BNAPS members receive a 40% discount from retail prices. BNAPS books are available from Ian Kimmerly Stamps, 62 Sparks Street, Ottawa, Ontario K1P 5A8, Canada; Phone: (613) 235-9119. Internet orders can be placed via <http://www.iankimmerly.com/books/>

The title of this book, *Postage Due Stamps of Canada 1906 - 1928*, is a misnomer.

But it is a misnomer of a work that benefits its readers. Co-author Stan Lum, a philatelist and well known as a dealer of Canadian stamps with a prodigious knowledge of the stamps of Canada, retained the title out of respect for the late Elsie Drury. It was Drury's manuscript, dealing with Canada's first four postage due issues, that inspired Lum to expand Drury's research papers and now covers every major aspect of Canada's postage due stamps. And it covers them in meticulous detail.

By no means is this work restricted to picturing examples of short-paid mail. It is all-encompassing.

The opening chapter of the book begins with a foreword by Dave Sessions, a former editor of *Maple Leaves*, the official journal of the Canadian Philatelic Society of Great Britain. Also included in the first chapter are Lum's introductory remarks and an acknowledgement outlining the circumstances leading up to his decision to convert his good friend Elsie Drury's manuscript into a full length publication. The manuscript was discovered on Drury's personal computer by her daughter, Mrs. Julia Neilson, after her mother's death.

Lum divided the book into nine chapters with one chapter dedicated to each of the first four postage due issues. (The book does not include the red postage dues, released in 1969).

Chapter six looks at post office stationery used with postage dues and chapter seven, a relatively short one, provides readers with an extensive listing of undeliverable mail forwarded to a dead letter office for further processing. The listings were made available, according to the author, by Robert Lamire (sp.) of the Postage Due Study Group.

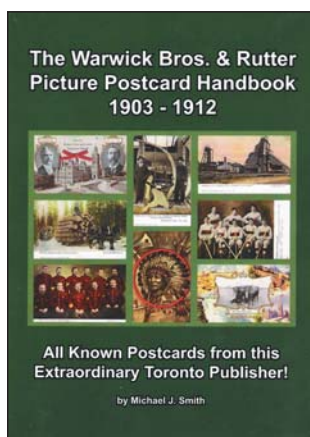
Chapter eight, the longest one in the book, looks at the history of postage due stamps and covers. It covers such areas as mixed and free frankings, bisects, refused mail, postage dues used in place of regular postage, special delivery, registration, overprints, sections on postcards and dead letter mail, redirected mail, and other such related matters.

A short bibliography in chapter nine complements the work despite its comprehensiveness.

While some collectors may consider Canada's postage due stamps as little more than back-of-the-book material, they served a necessary purpose in the accounting procedures of Canada's mail delivery system. As such, these stamps form an integral part of Canadian postal history.

There exists a dearth of published data on Canada's postage due issue and this latest work by Lum and Drury goes a long way in alleviating this paucity. No serious collector of 20th Century Canadian stamps or covers should ignore this latest addition to the body of philatelic literature.

Tony Shaman



THE WARWICK BROS. & RUTTER PICTURE POSTCARD HANDBOOK 1903- 1912

By Michael J. Smith. 2007, soft cover, 408 pages, 6½ by 9 inches. ISBN 978-0-9731924-2-1; Retail price C\$36.95 post paid within Canada; US\$36.95 post paid to US. Available from the author at 6200 Townwood Court, Mississauga, ON L5N 2L4, by phone 905-567-3370, or by e-mail at: msmith67@rogers.com

This is the third postcard book authored by technical writer Michael J. Smith. Each successive publication deals with an entirely different aspect of postcards.

bewildering array of photo cards, view cards, both signed and unsigned, private cards, chrome cards and picture cards, to say nothing of the near endless selection of thematic cards, including the ever-popular patriotic, military, and a whole host of other fancy cards.

Deltiology is an admittedly huge field to pursue and this trilogy (see *TCP* Vol. 54, No. 5, page 276 and Vol. 58, No. 3, page 184 for reviews of Smith's first two handbooks) goes a long way to assist collectors in making sense of a

An extensive (four-plus pages) table of contents makes this handbook easy to navigate. It is divided into 17 major sections, a brief introduction covering items such as Warwick's business history, a bit of background about the firm's advertising and picture postcards, postcard numbers

and images, how to value postcards and similar information. Two appendices and an index of cities and towns with accompanying postcard numbers complement the work.

Section 1, Patriotic, Heraldic and & Royalty Postcards is further subdivided by card series, 60 in total. One or two sample cards are illustrated from each series. A total of 2,901 cards are listed.

Also listed are 4,470 view cards, catalogued by territory or province, town or city and card number. A total of 37 card series comprise this section, with each one numbered and titled.

Appendix 1 consists of over 1,000 postcard entries, many illustrated and sorted by topic; Appendix 2 is a compendium of the various types of postcard backs manufactured by Warwick and annotated with a detailed description of each illustration.

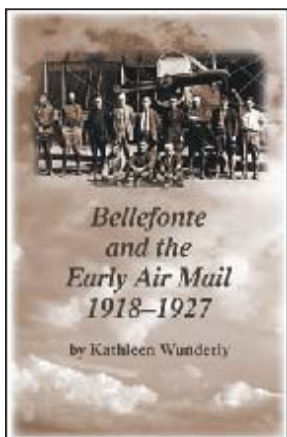
Obtained from the archives of the Toronto Postcard Club, maintained over a period of more than 30 years by

long-time club member Bill Buchanan, the handbook contains in excess of 7,300 entries including almost 400 high-resolution black and white images of cards.

The value in this latest work by Smith, as complete a record of Warwick Bros. & Rutter postcards as is currently possible to muster, is in its comprehensiveness. Because it is, by its very nature, a work that will probably never become totally complete, it must be considered a work in progress.

But it is a work that has progressed to a point where it surpasses by many orders of magnitude any other publication on the subject. And, for that reason, it is an invaluable tool for the serious collector or for collectors with a special interest in Warwick Bros. & Rutter postcards. With the obvious care that has gone into the preparation of this handbook we have no hesitation in recommending it to either group or to anyone with an interest in Canadian postcards or in a pictorial history of Canada.

Tony Shaman



WHEN LETTERS FIRST TOOK WING: BELLEFONTE AND THE EARLY AIR MAIL 1918-1927

Late in 1918, air mail in the United States moved from being a novelty at state fairs and aviation meets into the first awkward phases of what would one day be a complex coast-to-coast Post Office Department service regularly moving mail across a continent.

Bellefonte – a small town in central Pennsylvania – was in the right place at the right time, exactly where a refueling stop was urgently needed for the biplanes flying the air mail route from New York to Cleveland. In a matter of months, the Victorian-era town built an airfield and became the only scheduled stop in the state for early U.S. air mail. Early pilots familiar with the region's frequent fogs, mountainous terrain, unreliable weather and near total absence of level land for emergency landings nicknamed the route through Pennsylvania east of Bellefonte as "Hell's Stretch."

Written by Kathleen Wunderly, *Bellefonte and the Early Air Mail 1918-1927* tells the story of Bellefonte's role in the period when the government operated the air mail. It was an era of daredevil pilots, many of them rough and ready veterans of the Great War, who learned their trade when aviation meant wind on the chin and singing through the rigging of a canvas-and-wood biplane, a bygone age when a pilot's eyes and ears were his most reliable instruments by far.

Every pilot flying the eastern sector of the air mail system came to know Bellefonte, and many of them formed ties with

the residents. The lives and all too frequent deaths of these brave men mattered very much to their local friends, and left a lasting legacy.

Based on contemporary local newspaper articles and using numerous photographs, many of them published for the first time in more than 80 years, Wunderly recalls the men, the machines and the coming of age of air mail service in America. This book offers a unique local viewpoint on one of the most exciting periods of national history – when Bellefonte helped fly the U.S. mail.

An American Philatelic Society publication, *Bellefonte and the Early Air Mail 1918-1927* is a 6-inch by 9-inch softcover book that packs nearly 100 photographs into its 102 pages. Seven chapters of narrative are followed by an eighth by Ken Lawrence detailing U.S. air mail stamps and postal rates, with pricing information on the early air mail. An appendix, included with the kind permission of the American Air Mail Society, shows Bellefonte-related listings from the American Air Mail Catalogue.

Bellefonte and the Early Air Mail 1918-1927 is available for \$16 to APS members, a 20% discount from the nonmember's price of \$20. To order, send your remittance and your name and address (plus your APS number for members' orders) to the American Philatelic Society, 100 Match Factory Place, Bellefonte PA 16823-1367, or order online.

If you have any questions or require additional information, please contact Fred Baumann at fred@stamps.org or call him at 814-933-3803, ext. 212.



in my **OPINION** a mon **AVIS**

by *Stuart Keeley*

Collecting Deserves A Stamp

The hobby of stamp collecting started soon after the first postage stamps were issued. Since that time it is one hobby that can claim a large worldwide membership.

Over the years, collecting stamps and philately have thrived. In part, the hobby has thrived because relationships between the hobby and the various stamp-issuing authorities have developed. Canada is a leader in this area. The relationship in Canada was strengthened many years ago with the creation of a Stamp Advisory Committee. Individuals with varied backgrounds have been appointed to this committee, including those heavily involved in the collecting aspect of the hobby. Today, the committee has several strong ties to The Royal Philatelic Society of Canada and, therefore, to those who actively participate in the hobby. This arrangement leads to better designed commemorative and definitive stamps, stamps that are more appealing to collectors.

Canada Post has issued a number of souvenir sheets for various key philatelic events such as CAPEX '78, '87 and '96, but it has never issued a single stamp to celebrate the stamp-collecting hobby. I suspect that I now have all you readers either searching your memories or digging out your catalogues or collections to validate this bold statement. Many postal administrations have issued such stamps but not Canada. What Canada Post has been doing faithfully is releasing special issues for October Stamp Collecting Month for the express purpose of promoting the hobby. These issues are generally designed to appeal to the younger collectors, the philatelists of tomorrow.

Many postal administrations around the world have released stamp-collecting and/or philatelic commemorative issues. After all, collectors are the primary purchaser of these products. This revenue is a boon to Canada Post and may be one reason that the Stamp Advisory Committee was created in the first place. Given the relationship between collectors and Canada Post, I believe it is time for a stamp or a series of stamps to specifically celebrate the hobby in an appropriate fashion. Indeed, the ideal time for this type of issue would be to launch the largest annual gathering of stamp collectors in Canada: ROYAL/ROYALE. In my position as Co-Chair of ROYAL*2009*ROYALE, I have written to the Stamp Advisory Committee and Canada Post soliciting such a stamp or series of stamps to be issued starting in 2009. I invite you to join me in my quest for an appropriate stamp or series of stamps that Canada Post will be proud of and that collectors will line up to purchase and place in their collections.

If you would like to join me in my endeavour to commemorate our great hobby, please write to:

Stamp Advisory Committee,
Canada Post,
Suite N1200, 2701 Riverside Drive
Ottawa, ON
K1A 0B1

If you are interested in obtaining a copy of my sample letter please e-mail me at:
stuart.keeley@sympatico.ca ✉

Got Stamps



Canada's leading dealer is BUYING.

We will pay the highest amount for your stamp collection.

Always seeking for better quality stamps, rare classic issues, proofs, postal history and major modern errors.

Gary J. Lyon (Philatelist) Ltd.

P.O. Box 450 - Bathurst - New Brunswick - E2A 3Z4 - Canada

Tel (800) 667-8267 - Fax (888) 867-8267 - Email glstamps@nbnet.nb.ca



Celebrating over 75 years in the stamp business

As Canada's Premier Auction house we always have something new and interesting

When selling your collection our auctions will maximize your results

Please call or write us for a complimentary catalogue

r. maresch & son

DEALERS IN FINE STAMPS SINCE 1924

5TH FLOOR, 6075 YONGE ST., TORONTO, ON M2M 3W2 CANADA
☎ (416) 363-7777 www.maresch.com FAX (416) 363-6511